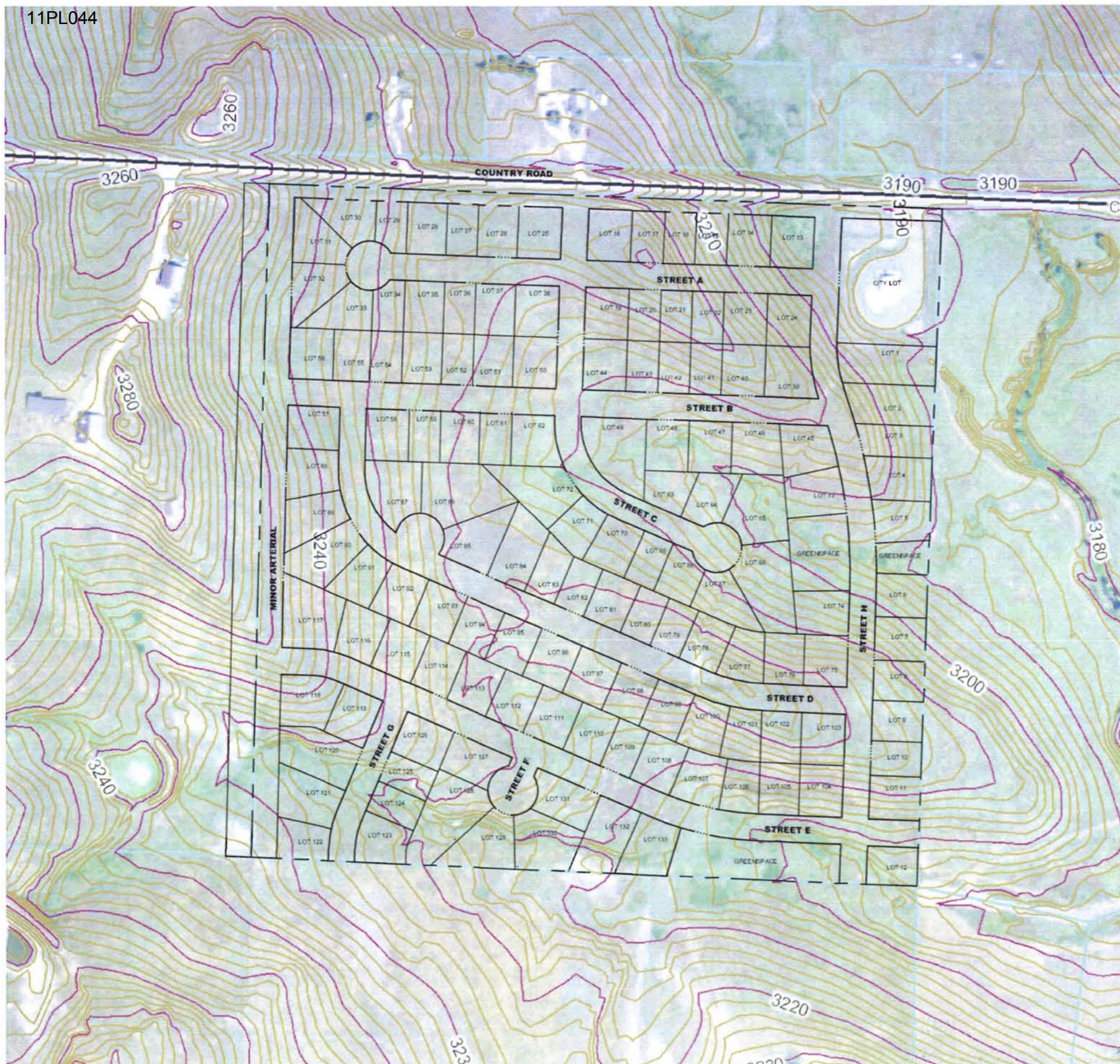


11PL044



CITY OF RAPID CITY
GROWTH MANAGEMENT DEPT.
DEVELOPMENT SERVICES

Plans are reviewed for general conformance with applicable governmental regulations, standards, design criteria and engineering standards. The City of Rapid City does not certify the validity, accuracy or completeness of the plans or design, which is the responsibility of the engineer of record. All necessary permits shall be obtained prior to construction of the proposed public improvements.

Engineering Review: _____ Date: _____
Comments: _____

Submitted: _____

Revised: _____

Internal Job No: 10-0570
Designed By: HBS
Drawn By: PMW
Surveyed By: NA
Survey Date: NA

PRELIMINARY FOR REVIEW ONLY

PROJECT SUMMARY

TOTAL AREA	=39.26 ACRES
USES	
ROW	=11.06 ACRES
CITY	=1.09 ACRES
GREENSPACE	=1.11 ACRES
LOTS	=26.00 ACRES
TOTAL # OF LOTS	=133 LOTS

RECEIVED

AUG 15 2011

Rapid City Growth
Management Department



DREAM DESIGN INTERNATIONAL, INC.
ENGINEERING, LANDSCAPE ARCHITECTURE,
LAND PLANNING, CONSTRUCTION ADMINISTRATION
528 KANSAS CITY STREET, SUITE 4, RAPID CITY, SD 57701
PHONE: (605) 348-0538 FAX: (605) 348-0545 WWW.DREAMDESIGNINC.COM

TETON HEIGHTS SUBDIVISION
RAPID CITY, SD



Sheet Name: PRELIMINARY LAYOUT

Sheet Number: 1 of 1