

# 6<sup>th</sup> St. & Main St. Scramble Walk Overview









Scramble Walk; Barnes Dance; Diagonal Crossing;  
Exclusive Pedestrian Phase

# Application

- High pedestrian volumes
- Significant # of turning vehicle conflicts
- Low speed roads
- Major road / minor road intersections

# Advantages

- Completely separate from traffic movements
- Reduce pedestrian storage area required

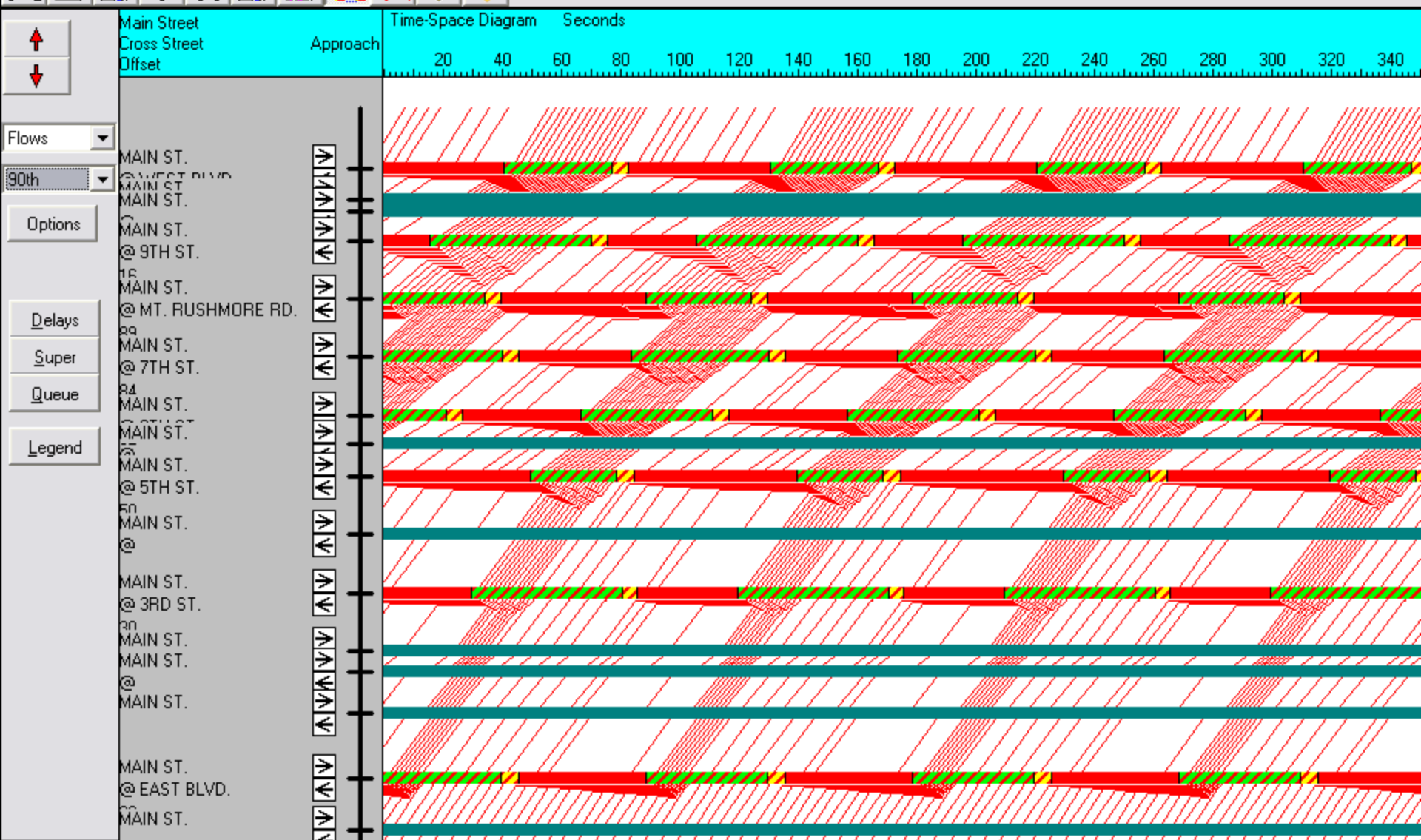
# Disadvantages

- Possible increased delay for pedestrians
- Increased perceived delay for pedestrians
- Increased violations of DON'T WALK
- Increased vehicle delays



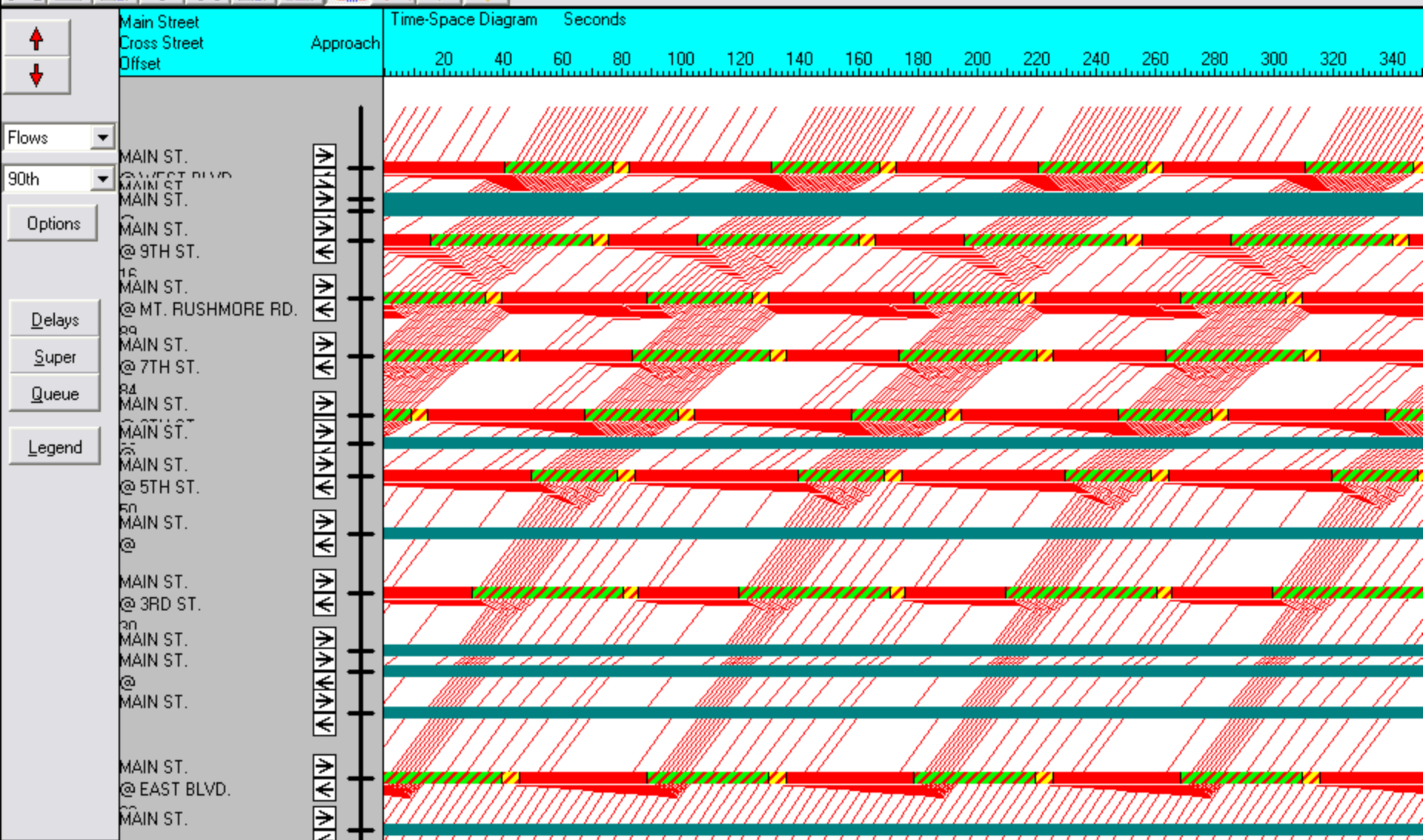


MAIN ST. & 6TH ST.



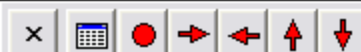


MAIN ST. & 7TH ST.



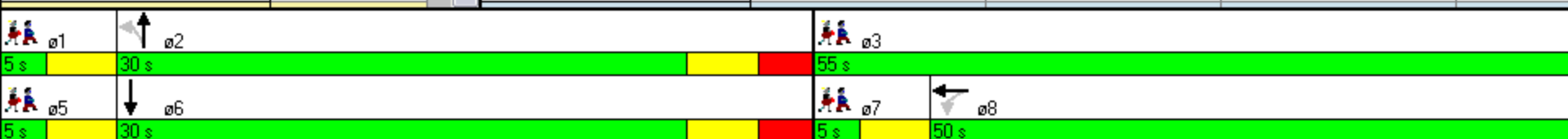


19 MAIN ST. & 6TH ST.

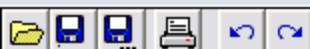


NODE SETTINGS	
Node #	19
Zone:	1
X East (ft):	30042
Y North (ft):	-23803
Z Elevation (ft):	0
Description	
Control Type	Pretimed
Cycle Length (s):	90.0
Lock Timings:	<input type="checkbox"/>
Optimize Cycle Length:	Optimize
Optimize Splits:	Optimize
Actuated Cycle(s):	90.0
Natural Cycle(s):	60.0
Max v/c Ratio:	0.56
Intersection Delay (s):	12.9
Intersection LOS:	B
ICU:	0.52
ICU LOS:	A
Offset (s) :	67.0
Referenced to:	Begin of Green
Reference Phase:	8 - WBTL

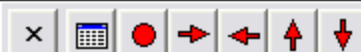
TIMING SETTINGS	EBL	EBT	EBR	WBL	WBT	WBR	NBL	NBT	NBR	SBL	SBR
Lanes and Sharing (#RL)											
Traffic Volume (vph)	0	0	0	41	1130	45	106	73	0	0	0
Turn Type	—	—	—	Perm	—	—	Perm	—	—	—	—
Protected Phases	—	—	—	—	8	—	—	2	—	—	—
Permitted Phases	—	—	—	8	—	—	2	—	—	—	—
Detector Phases	—	—	—	8	8	—	2	2	—	—	—
Switch Phase	—	—	—	0	0	—	0	0	—	—	—
Leading Detector (ft)	—	—	—	—	100	—	20	100	—	—	—
Trailing Detector (ft)	—	—	—	—	0	—	0	0	—	—	—
Minimum Initial (s)	—	—	—	4.0	4.0	—	4.0	4.0	—	—	—
Minimum Split (s)	—	—	—	23.5	23.5	—	23.5	23.5	—	—	—
Total Split (s)	—	—	—	50.0	50.0	—	30.0	30.0	—	—	—
Yellow Time (s)	—	—	—	3.1	3.1	—	3.1	3.1	—	—	—
All-Red Time (s)	—	—	—	2.4	2.4	—	2.4	2.4	—	—	—
Lost Time Adjust (s)	—	—	—	—	0.0	0.0	0.0	0.0	—	—	—
Lagging Phase?	—	—	—	<input checked="" type="checkbox"/>	<input checked="" type="checkbox"/>	—	<input checked="" type="checkbox"/>	<input checked="" type="checkbox"/>	—	—	<input checked="" type="checkbox"/>
Allow Lead/Lag Optimize?	—	—	—	<input checked="" type="checkbox"/>	<input checked="" type="checkbox"/>	—	<input checked="" type="checkbox"/>	<input checked="" type="checkbox"/>	—	—	<input checked="" type="checkbox"/>
Recall Mode	—	—	—	Max	Max	—	Max	Max	—	—	—
Actuated Effct. Green (s)	—	—	—	—	44.5	—	24.5	24.5	—	—	—
Actuated g/C Ratio	—	—	—	—	0.49	—	0.27	0.27	—	—	—
Volume to Capacity Ratio	—	—	—	—	0.56	—	0.36	0.16	—	—	—



MAIN ST. & 6TH ST. (30042 -23803)

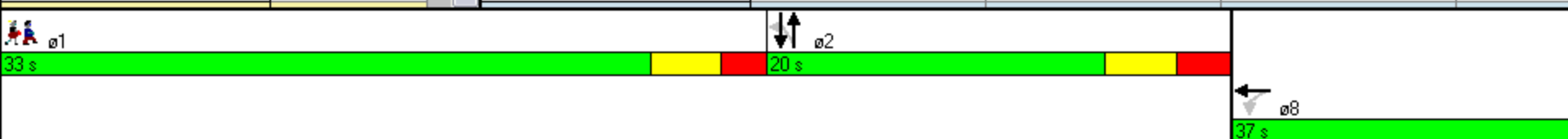


19 MAIN ST. & 6TH ST.



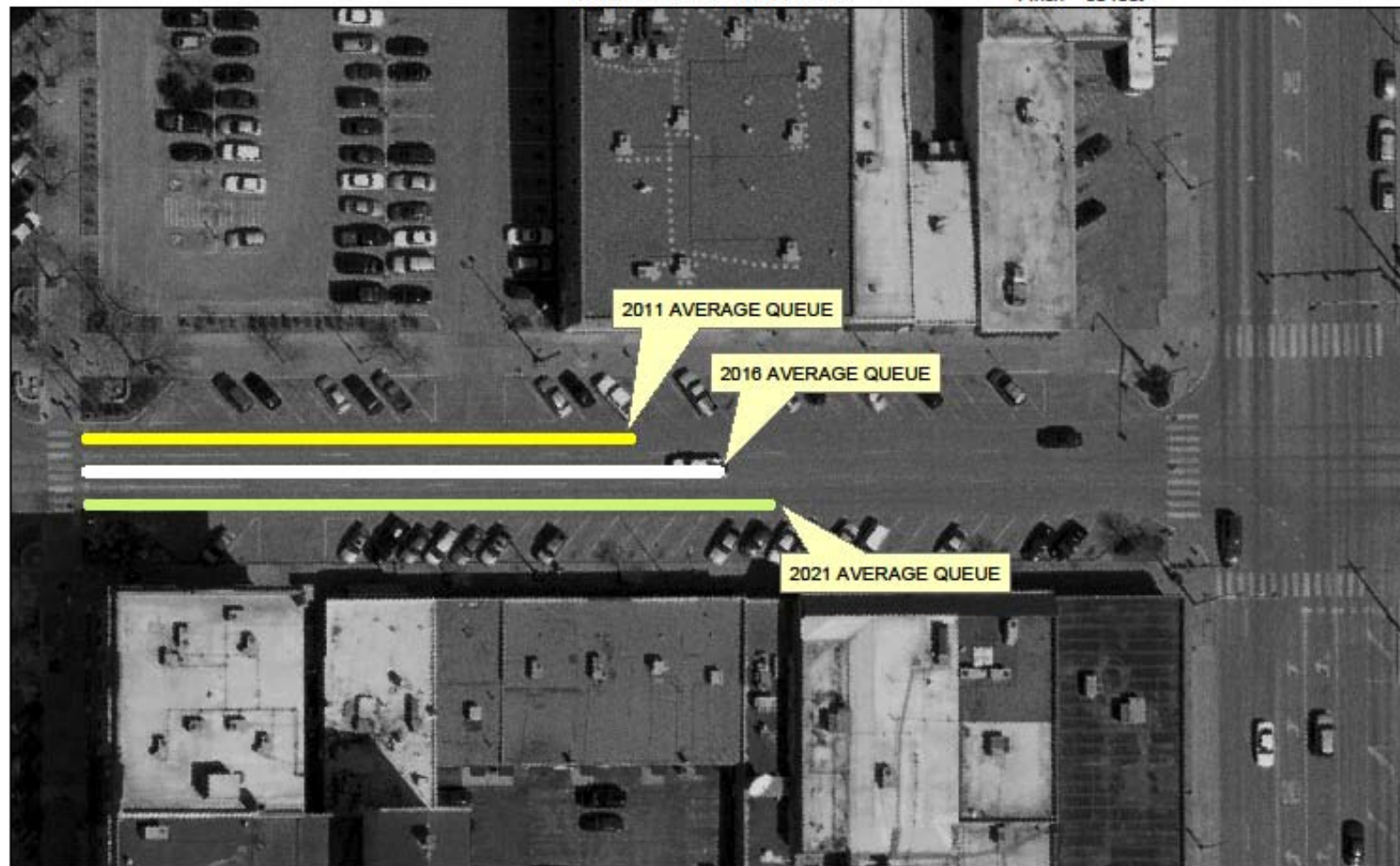
NODE SETTINGS	
Node #	19
Zone:	1
X East (ft):	30042
Y North (ft):	-23803
Z Elevation (ft):	0
Description	
Control Type	Pretimed
Cycle Length (s):	90.0
Lock Timings:	<input type="checkbox"/>
Optimize Cycle Length:	Optimize
Optimize Splits:	Optimize
Actuated Cycle(s):	90.0
Natural Cycle(s):	75.0
Max v/c Ratio:	0.79
Intersection Delay (s):	21.1
Intersection LOS:	C
ICU:	0.52
ICU LOS:	A
Offset (s):	68.0
Referenced to:	Begin of Green
Reference Phase:	8 - WBTL

TIMING SETTINGS	EBL	EBT	EBR	WBL	WBT	WBR	NBL	NBT	NBR	SBL	SBR
Lanes and Sharing (#RL)											
Traffic Volume (vph)	0	0	0	41	1130	45	106	73	0	0	0
Turn Type	—	—	—	Perm	—	—	Perm	—	—	—	—
Protected Phases	—	—	—	—	8	—	—	2	—	—	—
Permitted Phases	—	—	—	8	—	—	2	—	—	—	—
Detector Phases	—	—	—	8	8	—	2	2	—	—	—
Switch Phase	—	—	—	0	0	—	0	0	—	—	—
Leading Detector (ft)	—	—	—	—	100	—	20	100	—	—	—
Trailing Detector (ft)	—	—	—	—	0	—	0	0	—	—	—
Minimum Initial (s)	—	—	—	4.0	4.0	—	4.0	4.0	—	—	—
Minimum Split (s)	—	—	—	23.5	23.5	—	11.0	11.0	—	—	—
Total Split (s)	—	—	—	37.0	37.0	—	20.0	20.0	—	—	—
Yellow Time (s)	—	—	—	3.1	3.1	—	3.1	3.1	—	—	—
All-Red Time (s)	—	—	—	2.4	2.4	—	2.4	2.4	—	—	—
Lost Time Adjust (s)	—	—	—	—	0.0	0.0	0.0	0.0	—	—	—
Lagging Phase?	—	—	—	—	—	—	<input checked="" type="checkbox"/>	<input checked="" type="checkbox"/>	—	—	<input checked="" type="checkbox"/>
Allow Lead/Lag Optimize?	—	—	—	—	—	—	<input checked="" type="checkbox"/>	<input checked="" type="checkbox"/>	—	—	<input checked="" type="checkbox"/>
Recall Mode	—	—	—	Max	Max	—	Max	Max	—	—	—
Actuated Effct. Green (s)	—	—	—	—	31.5	—	14.5	14.5	—	—	—
Actuated g/C Ratio	—	—	—	—	0.35	—	0.16	0.16	—	—	—
Volume to Capacity Ratio	—	—	—	—	0.79	—	0.62	0.28	—	—	—



MAIN ST. & 6TH ST. (30042 -23803)

QUEUE LENGTH COMPARISON  
AFTERNOON PEAK HOURS  
SCRAMBLE-WALK PHASE INSTALLED  
MAIN ST. & SIXTH ST.



# Questions?