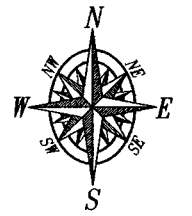


# EXHIBIT A

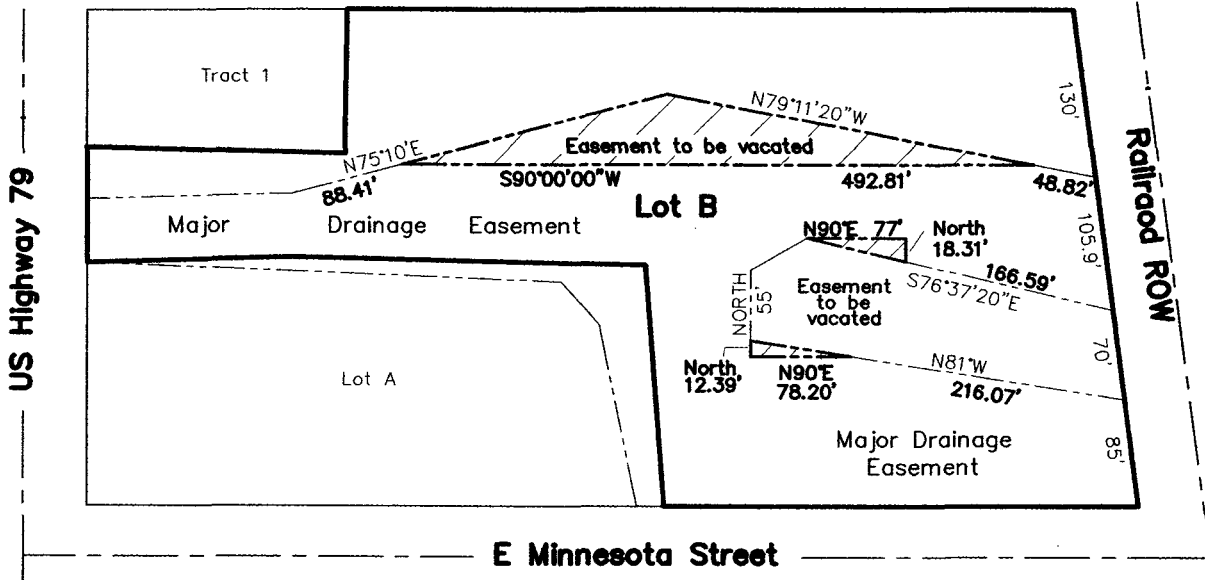
11VE019

Vacation of portions of Major Drainage Easement  
Lot B of Tract 2 of Kormylo Subdivision  
located in Section 17, T1N, R8E, BHM,  
Rapid City, Pennington County, South Dakota



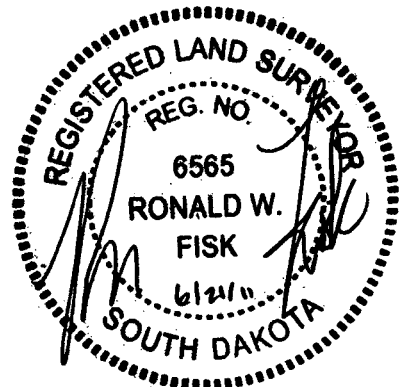
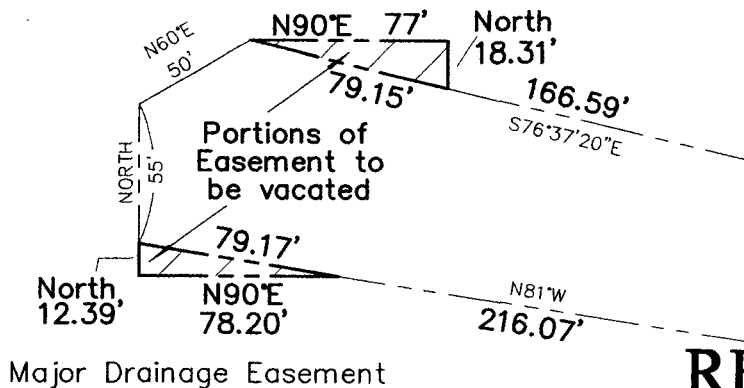
1" = 150'

**Lot B of Tract 2 of Kormylo Subdivision**  
Plat Book 20 Page 21



## Enlarged Detail - NTS

Major Drainage Easement



**RECEIVED**

AUG 03 2011

PREPARED BY:  
FISK LAND SURVEYING & CONSULTING ENGINEERS, INC.  
P.O. BOX 8154, RAPID CITY, SD 57709 (605) 348-1538 June 20, 2011

Rapid City Growth  
Management Department

No. 10-07-04