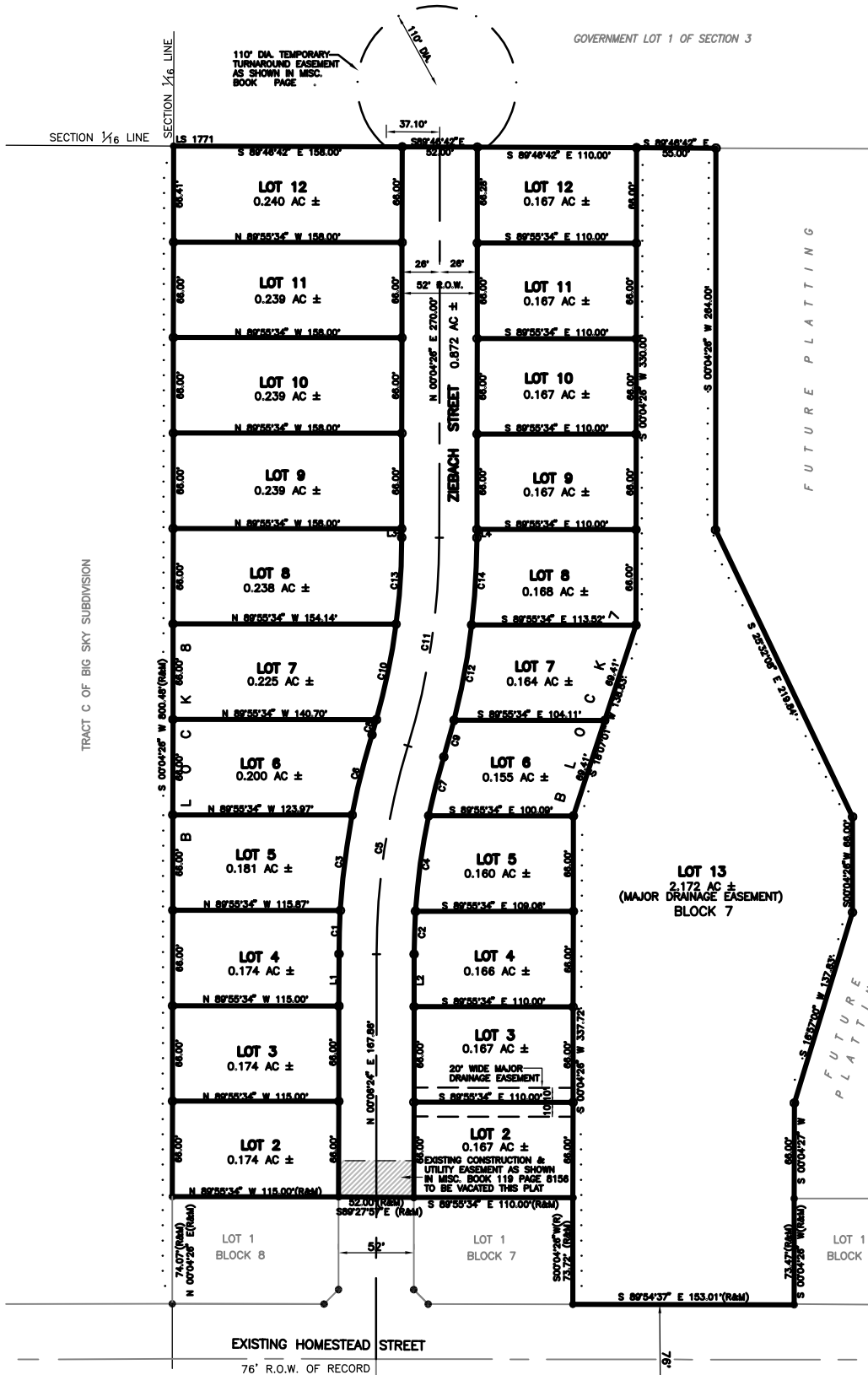


PLAT OF
**LOTS 2 THROUGH 13 OF BLOCK 7,
LOTS 2 THROUGH 12 OF BLOCK 8,
HOMESTEAD SUBDIVISION**

(FORMERLY A PORTION OF THE SE¼ OF THE NE¼ OF SECTION 3)
LOCATED IN THE SE¼ OF THE NE¼,
SECTION 3, T1N, R8E, B.H.M.,
RAPID CITY, PENNINGTON COUNTY, SOUTH DAKOTA



JUNE 24, 2011
N.T.S.