

PLAT OF
 LOTS 1 AND 2 OF TRACT 5 REVISED,
 SIGNAL HEIGHTS SUBDIVISION
 (formerly Tract 5 Revised of Signal Heights Subdivision and a portion
 of Vacated South Street)
 LOCATED IN THE E1/2,
 SECTION 1, T1N, R7E, BHM,
 RAPID CITY, PENNINGTON COUNTY, SOUTH DAKOTA



Denotes set 5/8" rebar with survey cap marked "Renner - Assoc. 9213"
 Denotes Found Survey Monument, marked LS 1771, unless otherwise noted.
 (R) Denotes Recorded in previous plat or description.
 (M) Denotes Measured in this survey.
 Base of Bearings: Geographic North as determined by Global Positioning System. (GPS)
 Utility and Minor Drainage Conduits are shown on the interior sides of the lots and are 12"-18" in size. There are Major Drainage Conduits shown on the exterior sides of the lots. The location of all conduits is shown on this plat. The plat shows the location of all conduits including but not limited to, telephone, water, fence, hydroponic, and other conduits. These conduits are shown to all public authorities the plat and shall be shown on all structures as it is shown on this plat to facilitate their location and removal.

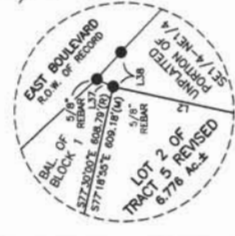
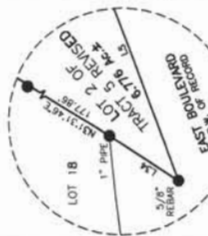
MEASURED DIMENSIONS - (M)

LINE	LENGTH	BEARING
L1	49.80	S77°25'34"E
L2	10.00	S89°52'00"E
L3	77.33	N69°24'53"E
L4	133.99	S77°40'20"E
L5	156.50	S69°13'29"W
L6	35.27	N43°30'25"E
L7	10.00	S89°52'00"E
L8	60.67	S71°02'59"W
L9	119.84	N49°24'09"W
L10	84.59	S63°02'21"W
L11	32.00	N47°23'33"E
L12	13.00	N47°23'33"E
L13	156.86	S70°04'40"W
L14	41.83	S53°04'35"W
L15	8.15	S29°17'27"W
L16	13.00	N47°23'33"E
L17	15.00	S13°12'00"W
L18	75.07	S21°53'09"W
L19	74.71	S21°40'41"W
L20	27.14	S21°52'59"W
L21	85.00	S43°18'48"E
L22	85.19	S43°18'48"E
L23	74.92	S77°13'22"E
L24	75.39	S77°33'02"E
L25	49.80	S77°25'34"E
L26	10.00	S89°52'00"E
L27	108.50	S69°13'29"W
L28	84.85	N13°01'24"W
L29	119.50	S71°52'09"W
L30	119.50	S71°52'09"W
L31	119.50	S71°52'09"W
L32	108.40	S69°13'29"W
L33	85.01	S77°18'48"E
L34	10.38	N29°47'02"E
L35	119.50	S71°48'48"E
L36	85.02	S77°18'48"E
L37	119.50	S71°48'48"E
L38	11.76	S24°23'00"E
L39	2.17	S76°59'51"E

RECORD DIMENSIONS - (R)

LINE	LENGTH	BEARING
L1	49.80	S77°25'34"E
L2	10.00	S89°52'00"E
L3	76.70	S89°59'00"E
L4	134.00	S77°54'00"E
L5	156.50	S69°13'29"W
L6	35.27	N43°30'25"E
L7	10.00	S89°52'00"E
L8	60.67	S71°02'59"W
L9	119.80	S70°49'00"W
L10	84.59	S63°02'21"W
L11	32.00	N47°23'33"E
L12	123.70	N49°23'00"W
L13	152.20	S70°10'00"W
L14	27.10	S21°31'00"W
L15	85.00	S43°18'48"E
L16	85.00	S43°18'48"E
L17	75.00	S21°31'00"W
L18	27.10	S21°31'00"W
L19	85.00	S43°18'48"E
L20	85.00	S43°18'48"E
L21	85.00	S43°18'48"E
L22	108.40	S69°13'29"W
L23	84.85	N13°01'24"W
L24	84.85	N13°01'24"W
L25	119.50	S71°48'48"E
L26	85.02	S77°18'48"E
L27	119.50	S71°48'48"E
L28	11.76	S24°23'00"E
L29	183.00	N21°32'00"E

CURVE LENGTH	RADIUS	DELTA	CHORD BEARING	CHORD DISTANCE
C1(10)	156.06	708.00	12°37'45"	156.00
C1(11)	156.06	708.00	12°37'45"	156.00
C1(12)	156.06	708.00	12°37'45"	156.00
C1(13)	156.06	708.00	12°37'45"	156.00
C1(14)	156.06	708.00	12°37'45"	156.00
C1(15)	156.06	708.00	12°37'45"	156.00
C1(16)	156.06	708.00	12°37'45"	156.00
C1(17)	156.06	708.00	12°37'45"	156.00
C1(18)	156.06	708.00	12°37'45"	156.00
C1(19)	156.06	708.00	12°37'45"	156.00
C1(20)	156.06	708.00	12°37'45"	156.00
C1(21)	156.06	708.00	12°37'45"	156.00
C1(22)	156.06	708.00	12°37'45"	156.00
C1(23)	156.06	708.00	12°37'45"	156.00
C1(24)	156.06	708.00	12°37'45"	156.00
C1(25)	156.06	708.00	12°37'45"	156.00
C1(26)	156.06	708.00	12°37'45"	156.00
C1(27)	156.06	708.00	12°37'45"	156.00
C1(28)	156.06	708.00	12°37'45"	156.00
C1(29)	156.06	708.00	12°37'45"	156.00
C1(30)	156.06	708.00	12°37'45"	156.00
C1(31)	156.06	708.00	12°37'45"	156.00
C1(32)	156.06	708.00	12°37'45"	156.00
C1(33)	156.06	708.00	12°37'45"	156.00
C1(34)	156.06	708.00	12°37'45"	156.00
C1(35)	156.06	708.00	12°37'45"	156.00
C1(36)	156.06	708.00	12°37'45"	156.00
C1(37)	156.06	708.00	12°37'45"	156.00
C1(38)	156.06	708.00	12°37'45"	156.00
C1(39)	156.06	708.00	12°37'45"	156.00
C1(40)	156.06	708.00	12°37'45"	156.00
C1(41)	156.06	708.00	12°37'45"	156.00
C1(42)	156.06	708.00	12°37'45"	156.00
C1(43)	156.06	708.00	12°37'45"	156.00
C1(44)	156.06	708.00	12°37'45"	156.00
C1(45)	156.06	708.00	12°37'45"	156.00
C1(46)	156.06	708.00	12°37'45"	156.00
C1(47)	156.06	708.00	12°37'45"	156.00
C1(48)	156.06	708.00	12°37'45"	156.00
C1(49)	156.06	708.00	12°37'45"	156.00
C1(50)	156.06	708.00	12°37'45"	156.00
C1(51)	156.06	708.00	12°37'45"	156.00
C1(52)	156.06	708.00	12°37'45"	156.00
C1(53)	156.06	708.00	12°37'45"	156.00
C1(54)	156.06	708.00	12°37'45"	156.00
C1(55)	156.06	708.00	12°37'45"	156.00
C1(56)	156.06	708.00	12°37'45"	156.00
C1(57)	156.06	708.00	12°37'45"	156.00
C1(58)	156.06	708.00	12°37'45"	156.00
C1(59)	156.06	708.00	12°37'45"	156.00
C1(60)	156.06	708.00	12°37'45"	156.00
C1(61)	156.06	708.00	12°37'45"	156.00
C1(62)	156.06	708.00	12°37'45"	156.00
C1(63)	156.06	708.00	12°37'45"	156.00
C1(64)	156.06	708.00	12°37'45"	156.00
C1(65)	156.06	708.00	12°37'45"	156.00
C1(66)	156.06	708.00	12°37'45"	156.00
C1(67)	156.06	708.00	12°37'45"	156.00
C1(68)	156.06	708.00	12°37'45"	156.00
C1(69)	156.06	708.00	12°37'45"	156.00
C1(70)	156.06	708.00	12°37'45"	156.00
C1(71)	156.06	708.00	12°37'45"	156.00
C1(72)	156.06	708.00	12°37'45"	156.00
C1(73)	156.06	708.00	12°37'45"	156.00
C1(74)	156.06	708.00	12°37'45"	156.00
C1(75)	156.06	708.00	12°37'45"	156.00
C1(76)	156.06	708.00	12°37'45"	156.00
C1(77)	156.06	708.00	12°37'45"	156.00
C1(78)	156.06	708.00	12°37'45"	156.00
C1(79)	156.06	708.00	12°37'45"	156.00
C1(80)	156.06	708.00	12°37'45"	156.00
C1(81)	156.06	708.00	12°37'45"	156.00
C1(82)	156.06	708.00	12°37'45"	156.00
C1(83)	156.06	708.00	12°37'45"	156.00
C1(84)	156.06	708.00	12°37'45"	156.00
C1(85)	156.06	708.00	12°37'45"	156.00
C1(86)	156.06	708.00	12°37'45"	156.00
C1(87)	156.06	708.00	12°37'45"	156.00
C1(88)	156.06	708.00	12°37'45"	156.00
C1(89)	156.06	708.00	12°37'45"	156.00
C1(90)	156.06	708.00	12°37'45"	156.00
C1(91)	156.06	708.00	12°37'45"	156.00
C1(92)	156.06	708.00	12°37'45"	156.00
C1(93)	156.06	708.00	12°37'45"	156.00
C1(94)	156.06	708.00	12°37'45"	156.00
C1(95)	156.06	708.00	12°37'45"	156.00
C1(96)	156.06	708.00	12°37'45"	156.00
C1(97)	156.06	708.00	12°37'45"	156.00
C1(98)	156.06	708.00	12°37'45"	156.00
C1(99)	156.06	708.00	12°37'45"	156.00
C1(100)	156.06	708.00	12°37'45"	156.00



RECEIVED
 JUN 24 2011
 Rapid City Growth
 Management Department