

11VE016

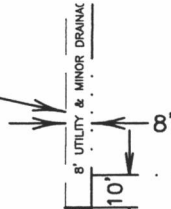
# EXHIBIT "A"

## VACATION OF A PORTION OF THE 8' MINOR DRAINAGE & UTILITY EASEMENT LOT 15RA HILLS VIEW SUBDIVISION SECTION 5, T1N, R8E, BHM. RAPID CITY, PENNINGTON COUNTY, SD



EXISTING 8' MINOR DRAINAGE & UTILITY EASEMENT ON LOT 15RA AS RECORDED IN PLAT BOOK 36, PAGE 23

LOT 3 HILLS VIEW SUBDIVISION SECTION 5, T1N, R8E, B.H.M.

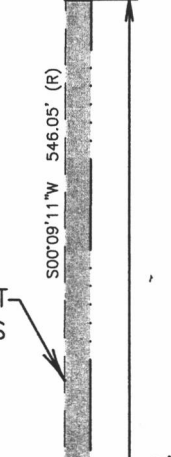


310' (R)

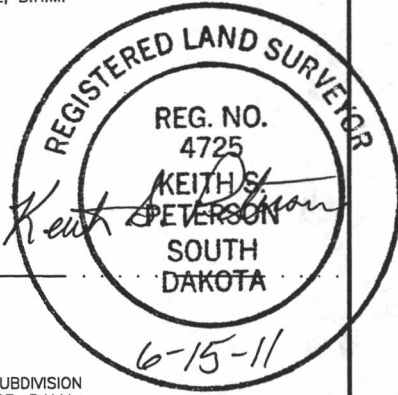
VACATION OF 8' MINOR DRAINAGE & UTILITY EASEMENT ON LOT 15RA (0.06 AC.) THIS DOCUMENT

LOT 4 HILLS VIEW SUBDIVISION SECTION 5, T1N, R8E, B.H.M.

LOT 15RA HILLS VIEW SUBDIVISION SECTION 5, T1N, R8E, B.H.M.

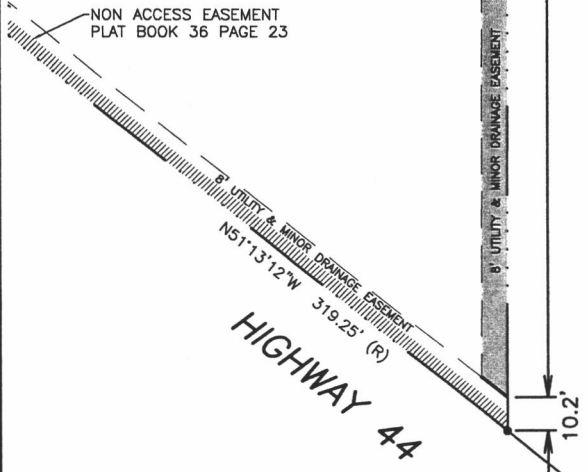


310' (R)



NON ACCESS EASEMENT PLAT BOOK 36 PAGE 23

LOT 5 HILLS VIEW SUBDIVISION SECTION 5, T1N, R8E, B.H.M.



8' UTILITY & MINOR DRAINAGE EASEMENT  
N51°13'12"W 319.25' (R)

HIGHWAY 44

# RECEIVED

JUN 20 2011

Rapid City Growth  
Management Department



1560 Concourse Dr.  
Rapid City, SD 57703  
Phone: (605) 341-7800  
Fax: (605) 341-7864  
www.cetecengineering.com  
Date: 6/14/2011