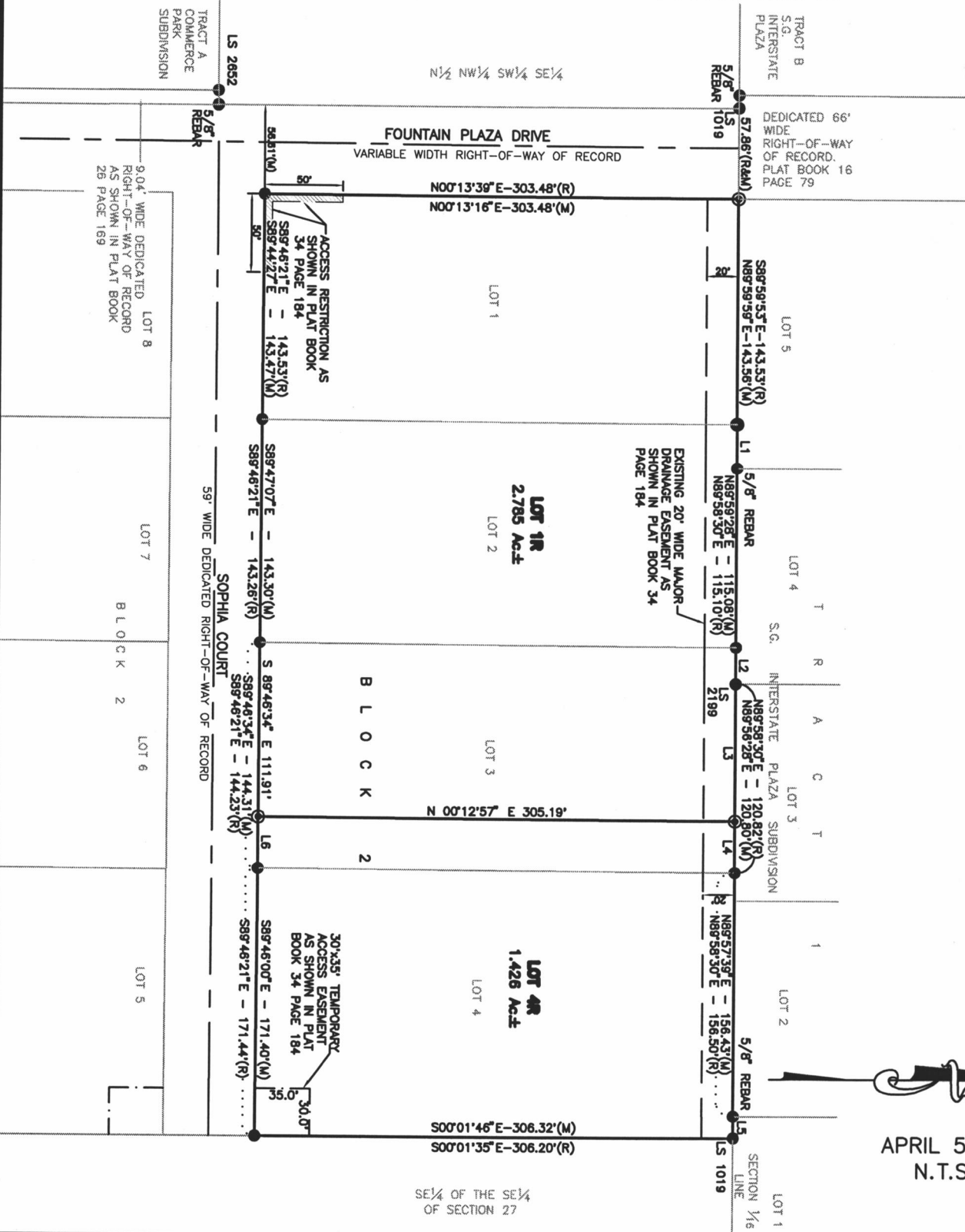


PLAT OF  
**LOT 1R AND LOT 4R OF BLOCK 2,  
 OF COMMERCE PARK SUBDIVISION**  
 (formerly a Lots 1 through 4 of Block 2 of Commerce Park Subdivision)  
 LOCATED IN THE E 1/2 OF THE SW 1/4 OF THE SE 1/4,  
 SECTION 27, T2N, R7E, B.H.M.,  
 RAPID CITY, PENNINGTON COUNTY, SOUTH DAKOTA



APRIL 5, 2011  
 N.T.S.

SE 1/4 OF THE SE 1/4  
 OF SECTION 27