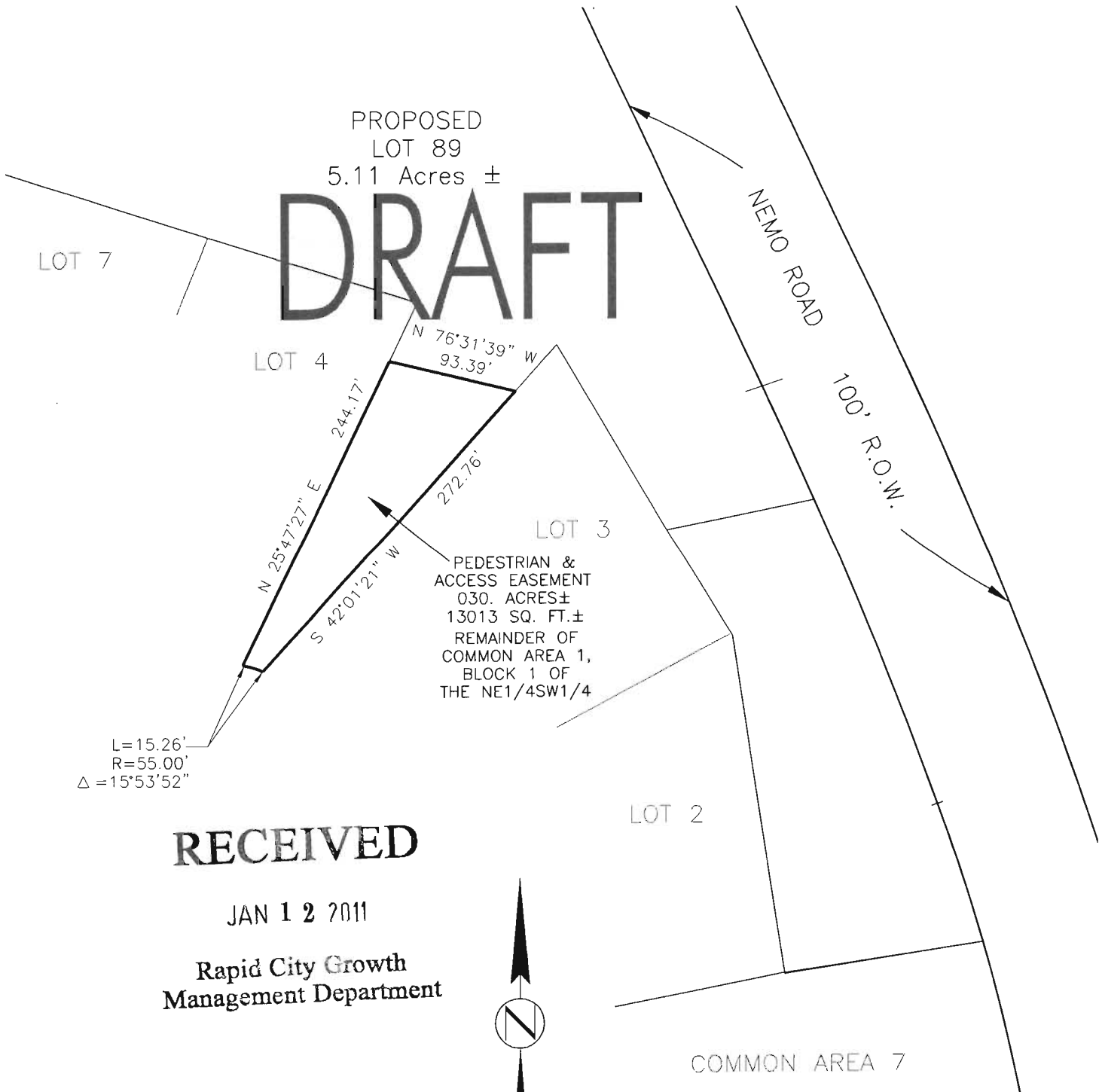


EXHIBIT A SHOWING PEDESTRIAN EASEMENT

LOT 89 OF BLOCK 1 OF CANYON SPRINGS RESERVE,
(FORMERLY A PORTION OF COMMON AREA 1 OF BLOCK 1 OF CANYON SPRINGS RESERVE)
LOCATED IN THE NE1/4SW1/4 OF SECTION 23, T.2N,R.6E,
OF THE BLACK HILLS MERIDIAN, PENNINGTON COUNTY, SOUTH DAKOTA

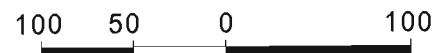


DRAFT

RECEIVED

JAN 12 2011

Rapid City Growth
Management Department



HORIZ. SCALE: 1"=100'

Prepared by:

**FOUR FRONT
DESIGN, INC.**
517 7th street
rapid city sd 57701
ph: 605.342.9470
fax: 605.342.2377
www.4front.biz

**FOUR FRONT
DESIGN, INC.**

ARCHITECTURE | ENGINEERING
GIS SURVEYING

Attachment #3

EXHIBIT A SHOWING DRAINAGE EASEMENT

LOT 89 OF BLOCK 1 OF CANYON SPRINGS RESERVE,
(FORMERLY A PORTION OF COMMON AREA 1 OF BLOCK 1 OF CANYON SPRINGS RESERVE)
LOCATED IN THE NE1/4SW1/4 OF SECTION 23, T.2N,R.6E,
OF THE BLACK HILLS MERIDIAN, PENNINGTON COUNTY, SOUTH DAKOTA

PROPOSED
LOT 89
5.11 Acres ±

DRAFT

LOT 7

LOT 4

LOT 3

LOT 2

NEMO ROAD

100' R.O.W.

S 78°39'53" W
108.03'

N 31°17'19" W
90.53'

N 08°31'57" W
248.57'

L=238.18'
R=3500.00"
Δ=3553.59"

DRAINAGE
EASEMENT
0.90 ACRES±
39180 SQ. FT.
REMAINDER OF
COMMON AREA 1,
BLOCK 1 OF
THE NE1/4SW1/4

L=10587.7'
R=1500.00"
Δ=402.38"

S 81°04'21" W
144.08'

COMMON AREA 7

RECEIVED

JAN 12 2011

Rapid City Growth
Management Department



Prepared by:

FOUR FRONT
DESIGN, INC.
517 7th street
rapid city sd 57701
ph: 605.342.9470
fax: 605.342.2377
www.4front.biz



FOUR FRONT
DESIGN, INC.

ARCHITECTURE | ENGINEERING
GIS | SURVEYING

100 50 0 100

HORIZ. SCALE: 1"=100'