

# EXHIBIT A

## Vacation of Easement

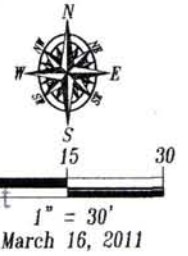
### Tract A, Blake's Addition No 2

### Rapid City, Pennington County, South Dakota

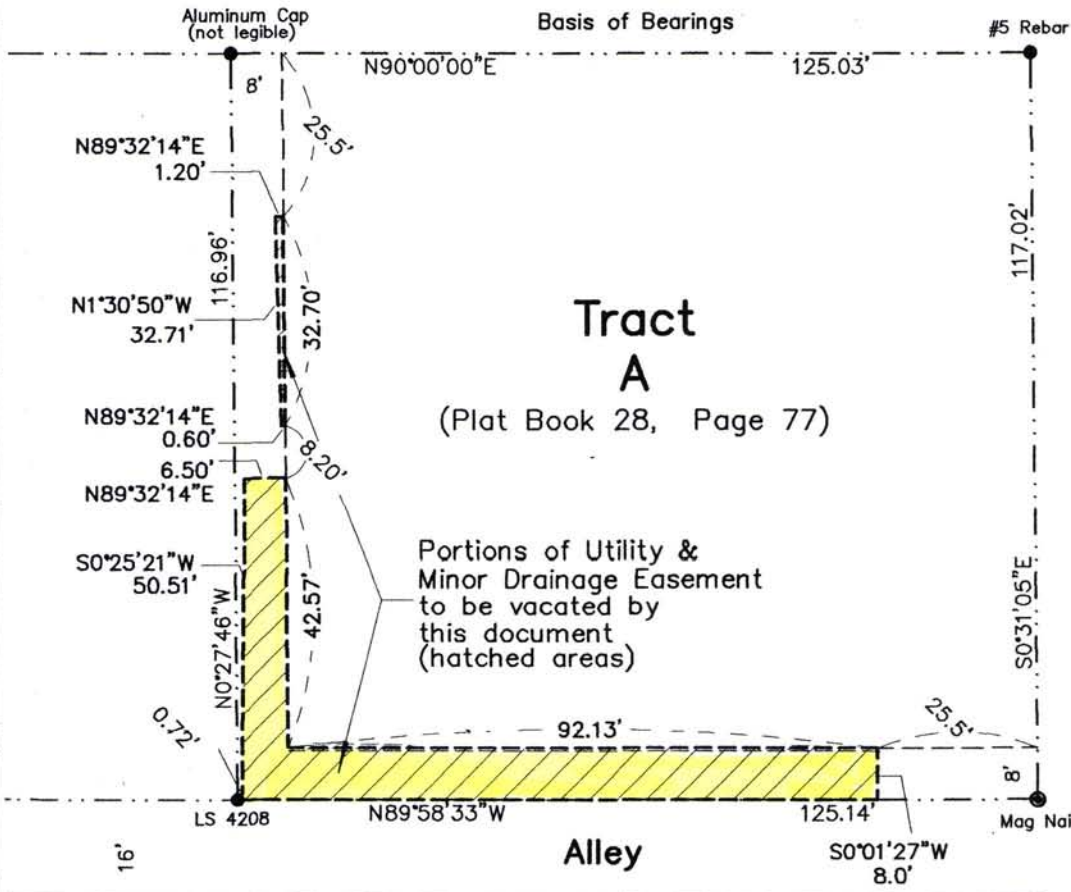
# RECEIVED

MAR 18 2011

Rapid City Growth  
Management Department



## East Chicago St



## Tract A

(Plat Book 28, Page 77)

Portions of Utility & Minor Drainage Easement to be vacated by this document (hatched areas)

Maple Avenue

Alley

- N89°58'33"W = Measured this survey
- = Found survey monument as noted
- ⊙ = Set survey monument as noted

