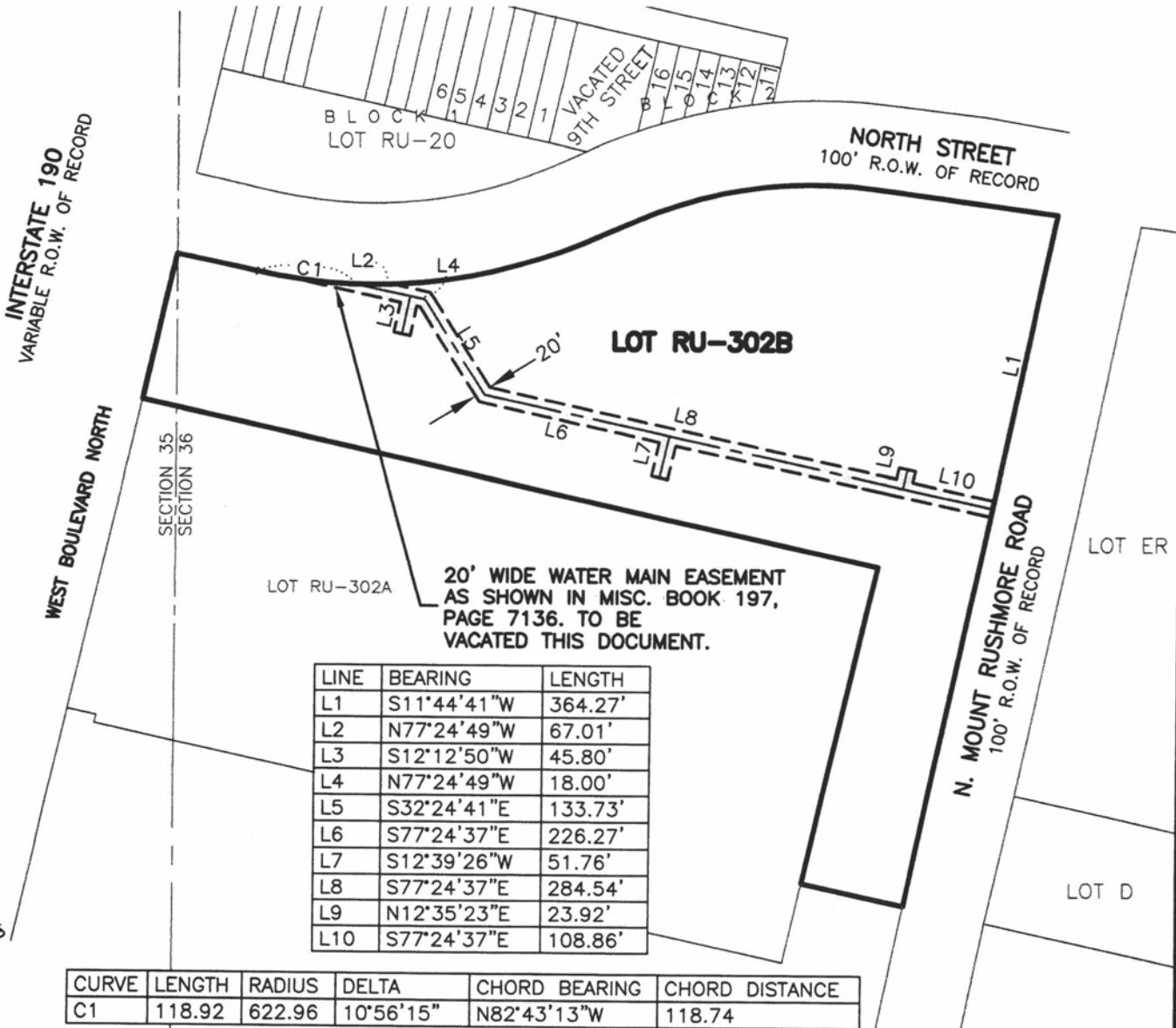


VACATION OF 20' WIDE WATER MAIN EASEMENT LOT RU-302B OF THE ORIGINAL TOWNSITE OF RAPID CITY

LOCATED IN THE E1/2 OF SECTION 35 AND IN THE W1/2 OF SECTION 36

ALL IN T2N, R7E, BHM,
RAPID CITY, PENNINGTON COUNTY, SOUTH DAKOTA



20' WIDE WATER MAIN EASEMENT
AS SHOWN IN MISC. BOOK 197,
PAGE 7136. TO BE
VACATED THIS DOCUMENT.

LINE	BEARING	LENGTH
L1	S11°44'41"W	364.27'
L2	N77°24'49"W	67.01'
L3	S12°12'50"W	45.80'
L4	N77°24'49"W	18.00'
L5	S32°24'41"E	133.73'
L6	S77°24'37"E	226.27'
L7	S12°39'26"W	51.76'
L8	S77°24'37"E	284.54'
L9	N12°35'23"E	23.92'
L10	S77°24'37"E	108.86'

CURVE	LENGTH	RADIUS	DELTA	CHORD BEARING	CHORD DISTANCE
C1	118.92	622.96	10°56'15"	N82°43'13"W	118.74



DECEMBER 22, 2010



SCALE 1" = 200'

TRACT 19



CITY HALL 1903

RENNER & ASSOCIATES, LLC.

616 SIXTH ST. * RAPID CITY, SD 57701
PHONE: 605/721-7310 FAX: 605/721-7313
SPEARFISH OFFICE: 605/717-0016

