



KEYNOTES:

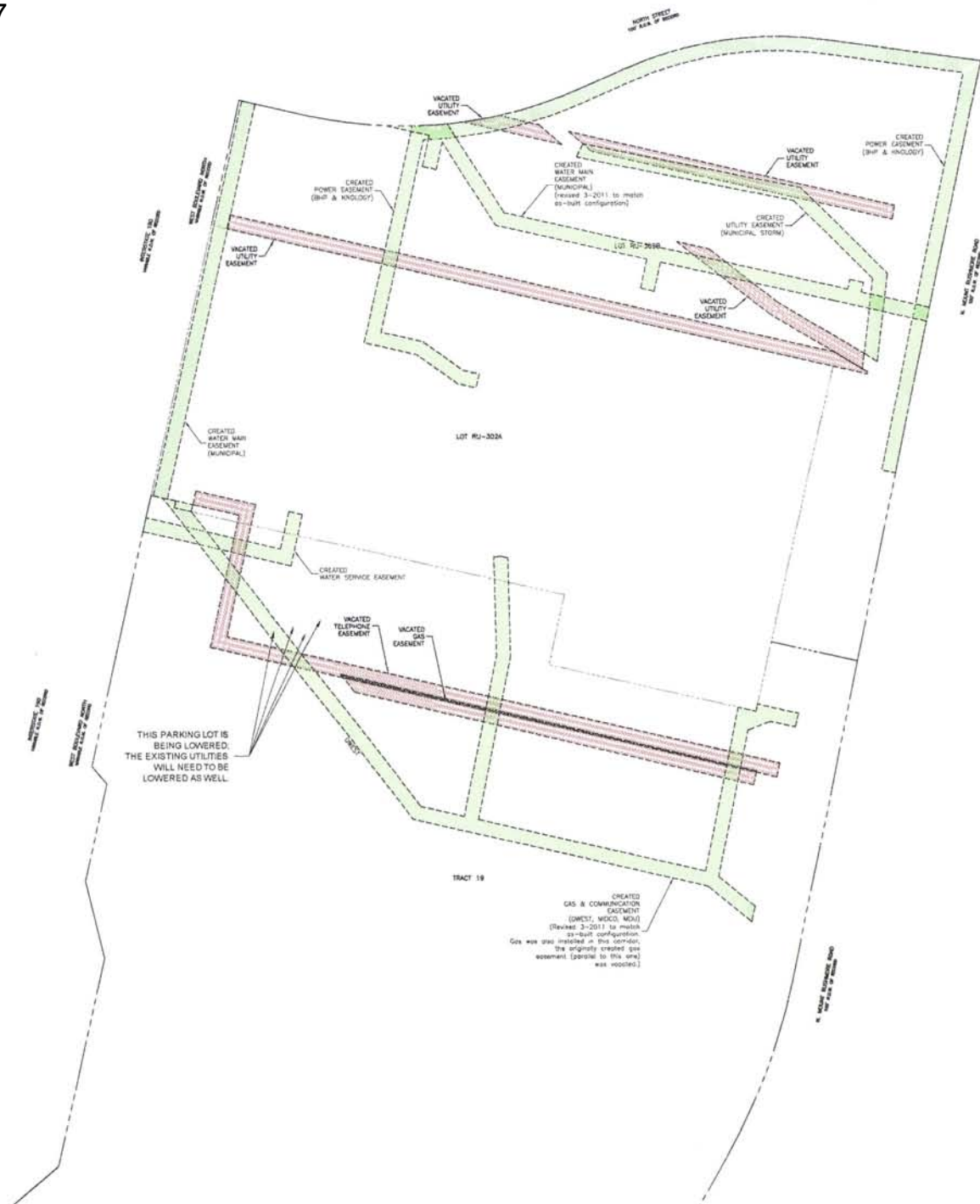
Prepared By:
RENNER & ASSOCIATES, L.L.C.
1114 SOUTH D.E. 1ST AVENUE, SUITE 200, SIOUX CITY, IOWA 51101
PHONES: 712.255.3610, 712.252.0484 FAX: 712.252.0484
WWW.RENNERANDASSOCIATES.COM



LEGEND

▲	CONTROL POINT	---	GRASS LAW FENCE
□	WARRANTY	---	CURB & GUTTER
○	PIPE VERTICAL	---	BARBER LINE
○	WATER MAIN	---	POWER LINE
○	SEWER	---	OVERHEAD POWER
○	TELEPHONE	---	TELEPHONE LINE
○	ROOF DRAIN	---	SPRINKLER MAIN LINE
○	POWER POLE	---	UNDERGROUND POWER
○	LIGHT POLE	---	SALE LINE
○	WATER	---	CABLE LINE
○	SEWER	---	FEED LINE
○	TELEPHONE	---	
○	PUMP	---	
○	LINE	---	
○	BOX	---	
○	WELL	---	
---	SEWER CONTROL D/S	---	
---	SEWER CONTROL U/S	---	
---	PROPERTY LINE	---	
---	ASPHALT SURFACE	---	
---	CONCRETE SURFACE	---	
---	DRAIN	---	
---	LANDSCAPING	---	

● REMOVES EXISTING SURVEY EQUIPMENT
○ REMOVES 'NOT A.S.' MARKS WHEN 'RENDER-ASSOC. ONLY'
○ REMOVES THE SURVEY



UTILITIES
SOUTH DAKOTA GAS CALL REGISTRATION CENTER
1114 SOUTH D.E. 1ST AVENUE, SUITE 200
SIOUX CITY, IA 51101
The location of existing underground utilities are shown as an approximation and are based on the latest information supplied by the owner or its representative. The contractor shall determine the exact location of all utilities, including existing and proposed, and agree to be fully responsible for the location of utilities which might be encountered by the contractor's work to verify those who prepare any and all underground utilities.

COORDINATION: 246-2610/ARLA CODE BLDG.
SDU - PLAN # 30-4201
REVISION # 22-0205
OWNER - PLAN # 30-4202
PROVIDER: THE E. F. FLETCHER
INDEPENDENT - Terry H. 761-7123
RAPID CITY UTILITY DEPT. - PLAN # 30-4157
RAPID CITY UTILITIES MAINT. - CHG P. 30-4183
ELECTRICAL ENGINEERING - ARLA 22-0205
MECHANICAL ENGINEERING - Terry H. 340-0980

**CENTRAL HIGH SCHOOL
RENOVATIONS AND ADDITIONS**
RAPID CITY AREA SCHOOL DISTRICT #51-4
RAPID CITY, SOUTH DAKOTA

- EASEMENTS VACATED
- EASEMENTS CREATED

**EASEMENT
MAP**

PROJECT NO. 0614 DSW/MK/HO
CIVIL #2416 ADDENDUM #1: 3/24/2010
DRAFTER: PMM
DATE: 3/16/2010
C1.16
If this drawing is not 30" x 42" it is a reduced print.
AS-BUILT (EASEMENTS) 3/2011