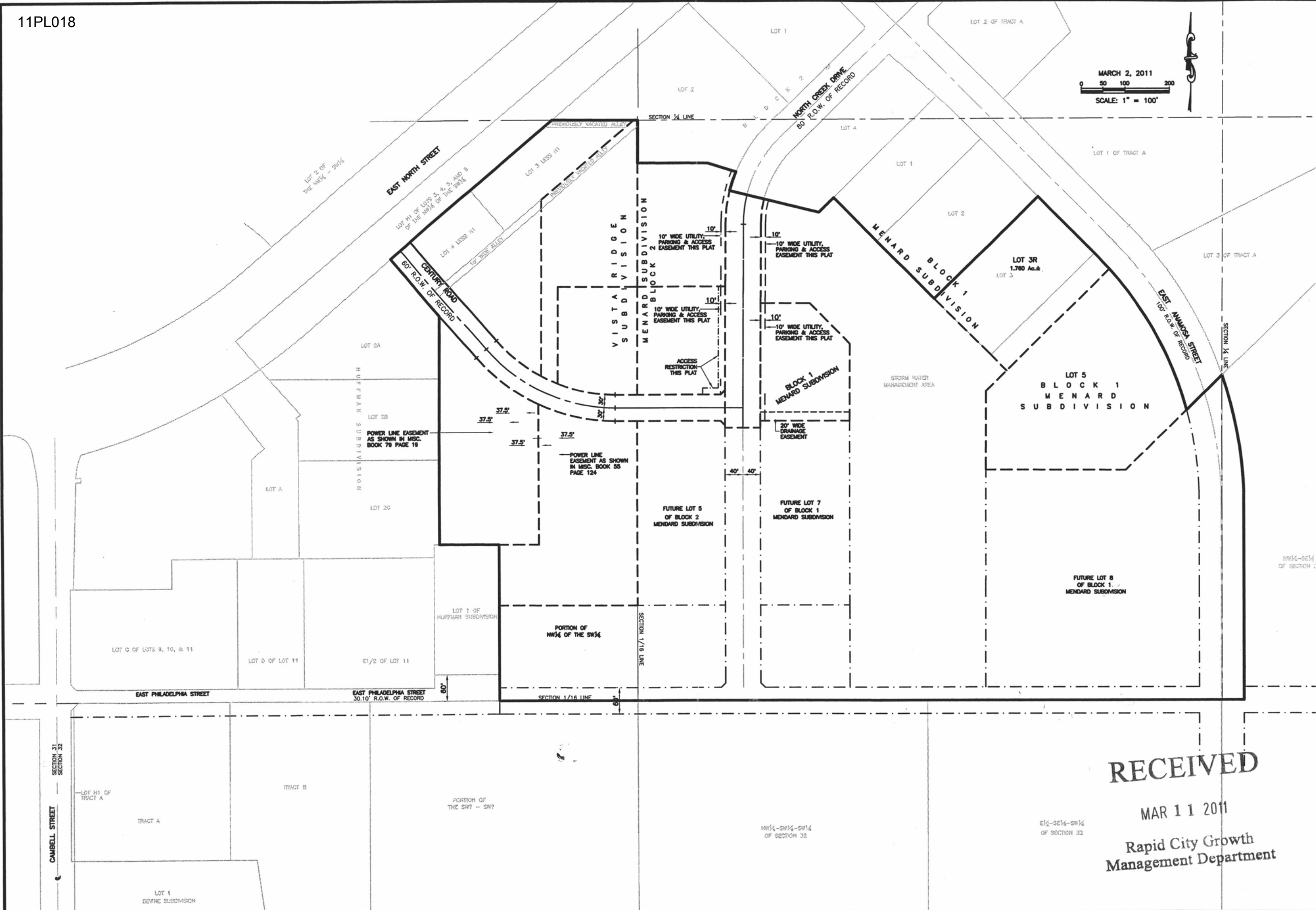


MARCH 2, 2011
SCALE: 1" = 100'



SPERLICH
Consulting, Inc.
221 Columbus St., Suite 1 Rapid City SD 57701
TEL: (605) 721-4040 FAX: (605) 721-4049
E-MAIL: dsperlich@sperrlichinc.com
"Engineering" "Surveying" "Planning"

REVISIONS	DATE	REVISION

LEGAL DESCRIPTION:
Lowers in the NW 1/4 of the NW 1/4
located in the NW 1/4, NE 1/4, SW 1/4
of Section 32, Township 43N, Range 65W,
Black Hills National Forest, DeWitt
County, South Dakota
Surveyed by: SD
DWM/CAS

REVISIONS

REVISED SITE PLAN
EAST PHILADELPHIA STREET EXTENSION

PROJECT NUMBER 3198.03
SHEET 1/1

RECEIVED

MAR 11 2011

Rapid City Growth
Management Department

E1/2-SE1/4-SW1/4
OF SECTION 32