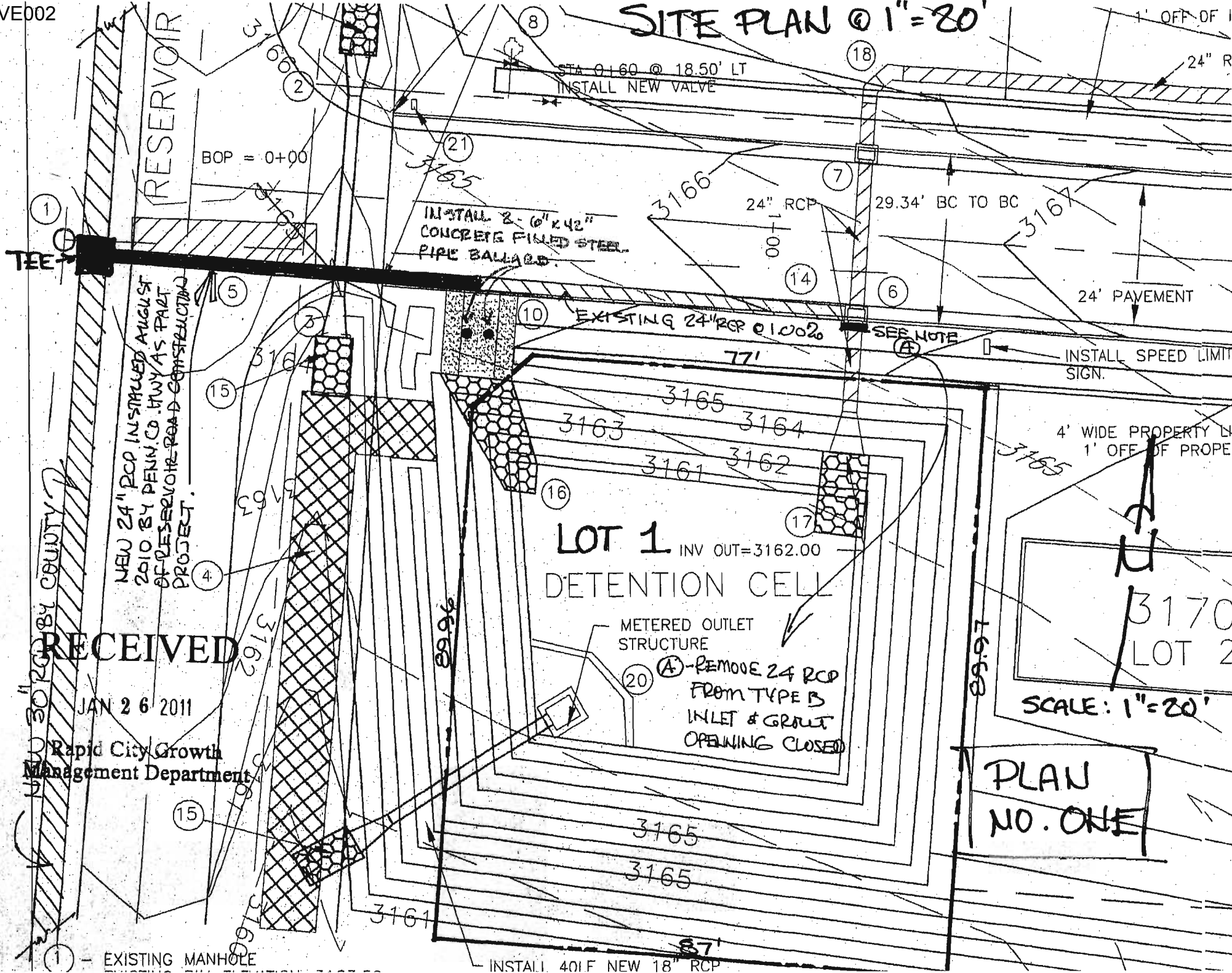


SITE PLAN @ 1"=20'



NEW 24" RCP INSTALLED AUGUST 2010 BY PENN. CO. HWY AS PART OF RESERVOIR ROAD CONSTRUCTION PROJECT.

RECEIVED

JAN 26 2011

Rapid City Growth Management Department

LOT 1 INV OUT=3162.00
DETENTION CELL

(A) - REMOVE 24 RCP FROM TYPE B INLET & GROUT OPENING CLOSED

4' WIDE PROPERTY 1' OFF OF PROPEL

SCALE: 1"=20'

PLAN NO. ONE

(1) - EXISTING MANHOLE

INSTALL 40LF NEW 18" RCP