

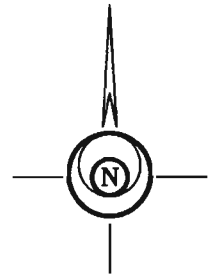
11VE002

VACATION OF MAJOR DRAINAGE EASEMENT

LEGAL DESCRIPTION:

LOT 1 OF BUFFALO RIDGE SUBDIVISION
LOCATED IN SECTION 11, T1N, R8E, BHM.
PENNINGTON COUNTY, SOUTH DAKOTA

NOTE: LOT 1 WAS SET OUT ON THE ORIGINAL PLAT, WHICH IS FILED IN PLAT BOOK 30 PAGE 112 AT THE PENNINGTON COUNTY REGISTER OF DEEDS OFFICE, AS MAJOR DRAINAGE EASEMENT. WE ARE HEREBY VACATING THE ENTIRE MAJOR DRAINAGE EASEMENT AS SHOWN HATCHED ON THIS DOCUMENT.



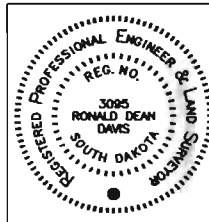
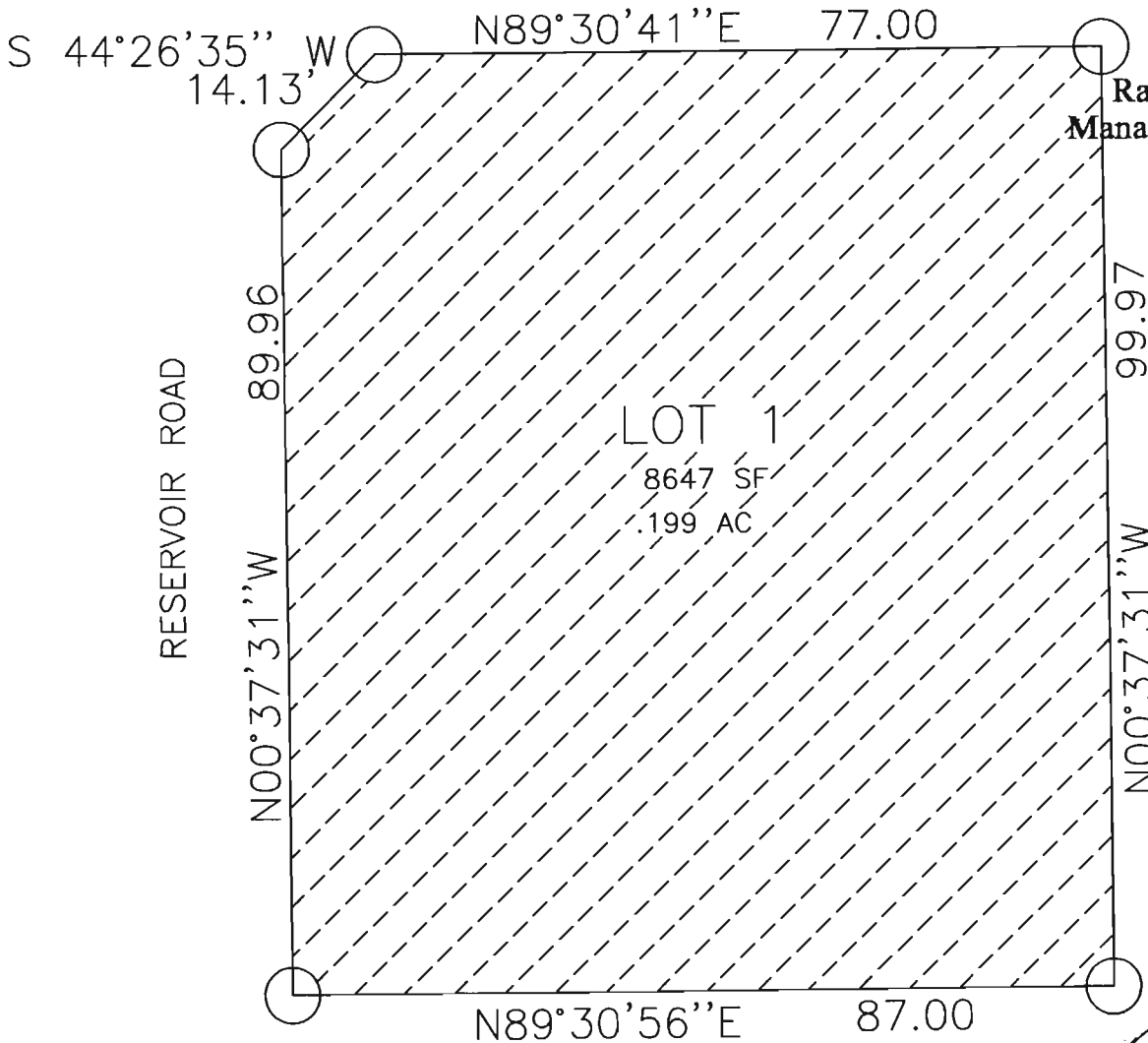
SCALE 1" = 20'
JANUARY 26, 2011

RECEIVED

SHAW COURT

JAN 26 2011

Rapid City Growth
Management Department



DAVIS ENGINEERING, INC.
1060 KINGS ROAD, RAPID CITY, SOUTH DAKOTA, 57702
PHONE (605) 341-3095

EXHIBIT A

Surveyed by: <u>BDM</u>	Date: _____	Scale: <u>1"=20'</u>
Designed by: <u>BDM</u>	Date: _____	Revisions: _____
Drawn by: <u>ABD</u>	Date: _____	_____
Checked by: <u>BDM</u>	Date: <u>JAN 26, 2011</u>	_____

Job Number: 2011-3