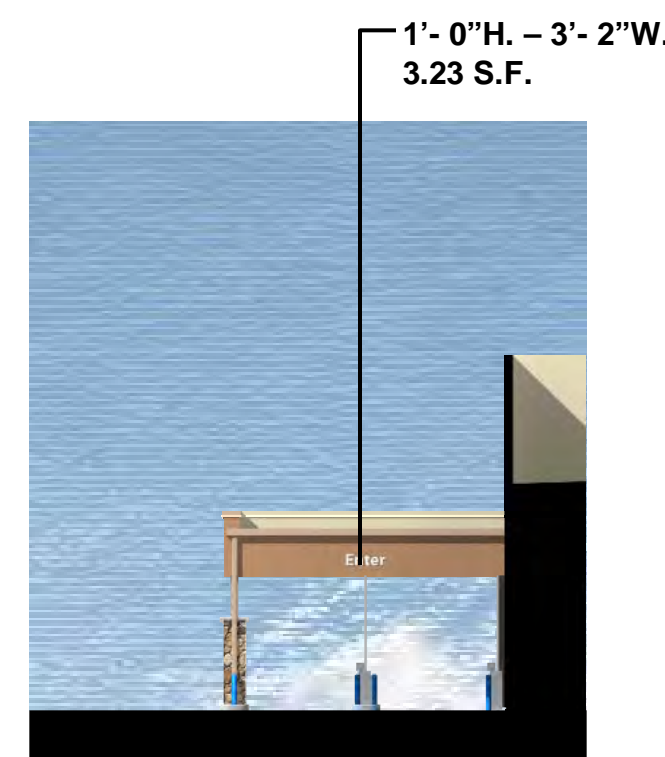


Rear Elevation



Left Elevation



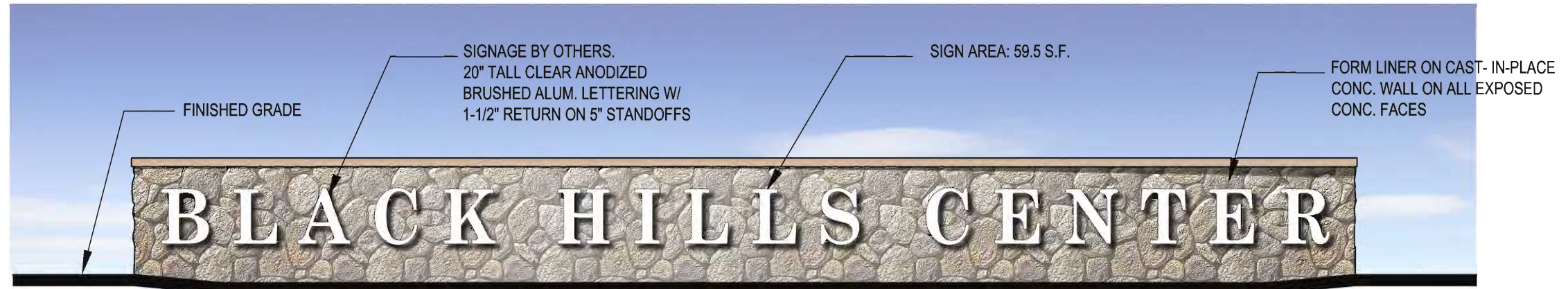
Rear Elevation  
(Pharmacy Drive-Thru)

| Sign                | # | Type        | Color  | Height  | illumination | Sq. Ft. | Total Sq. Ft. |
|---------------------|---|-------------|--------|---------|--------------|---------|---------------|
| Walmart             | 1 | Identity    | White  | 5' - 6" | Channel Lit  | 298.00  | 298.00        |
| Spark               |   |             | Yellow | 8' - 0" | Channel Lit  |         |               |
| Market & Pharmacy   | 1 | Directional | White  | 2' - 6" | n/a          | 102.58  | 252.44        |
| Home & Living       | 1 | Directional | White  | 2' - 6" | n/a          | 72.62   |               |
| Outdoor Living      | 1 | Directional | White  | 2' - 6" | n/a          | 77.24   |               |
| Tire & Lube         | 1 | Additional  | White  | 2' - 0" | n/a          | 28.99   | 35.23         |
| Lube                | 2 | Traffic     | White  | 1' - 0" | n/a          | 3.12    |               |
| Pharmacy Drive-Thru | 1 | Additional  | White  | 1' - 6" | n/a          | 39.88   |               |
| Enter               | 1 | Traffic     | White  | 1' - 0" | n/a          | 3.23    |               |
| Exit                | 1 | Traffic     | White  | 1' - 0" | n/a          | 2.34    | 45.45         |
| <b>Total</b>        |   |             |        |         |              |         | <b>631.12</b> |

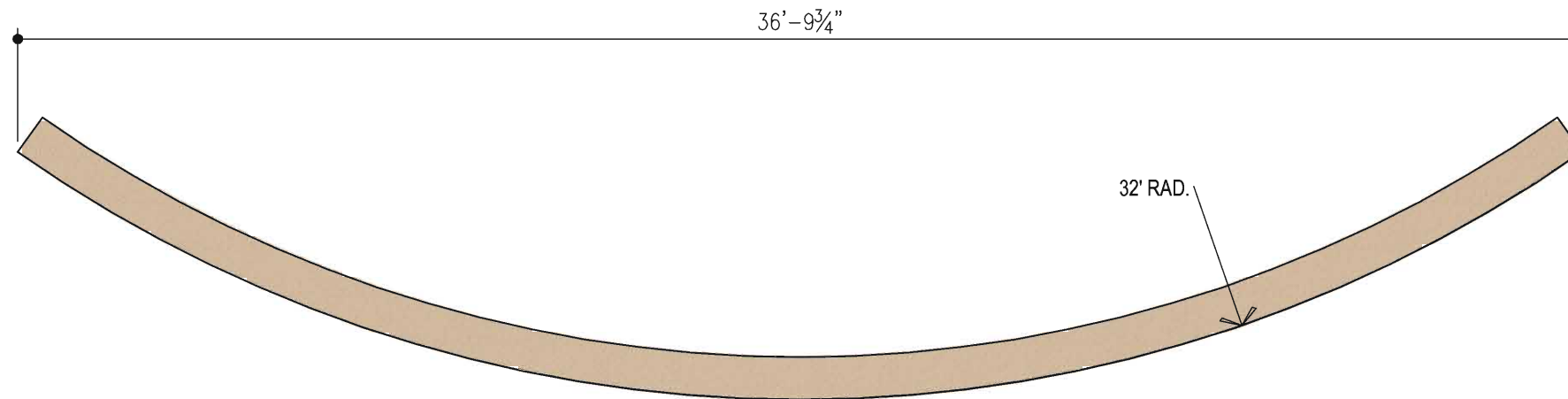
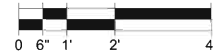
**\*Identity & Directional Signage Total Sq. Ft. 550.44**



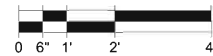


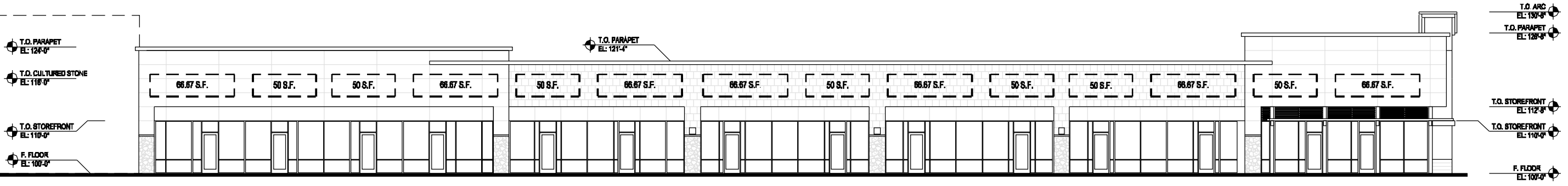


MONUMENT SIGN ELEVATION

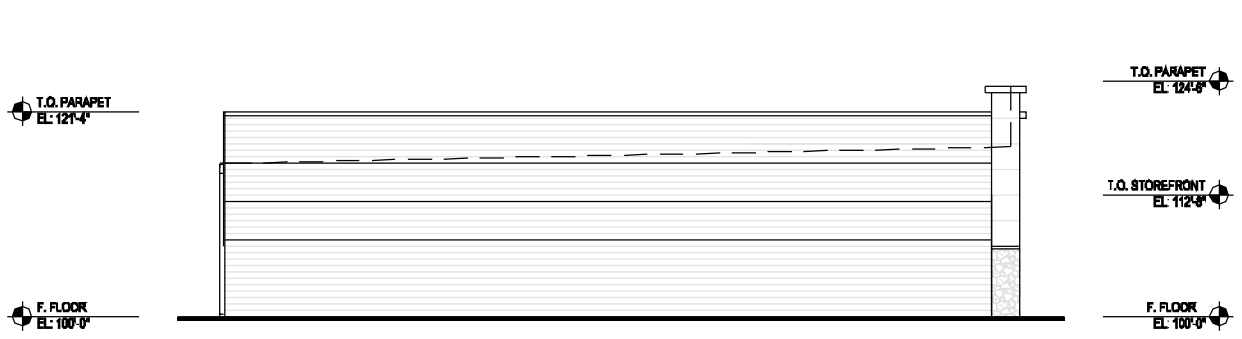
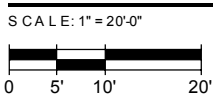


MONUMENT SIGN PLAN



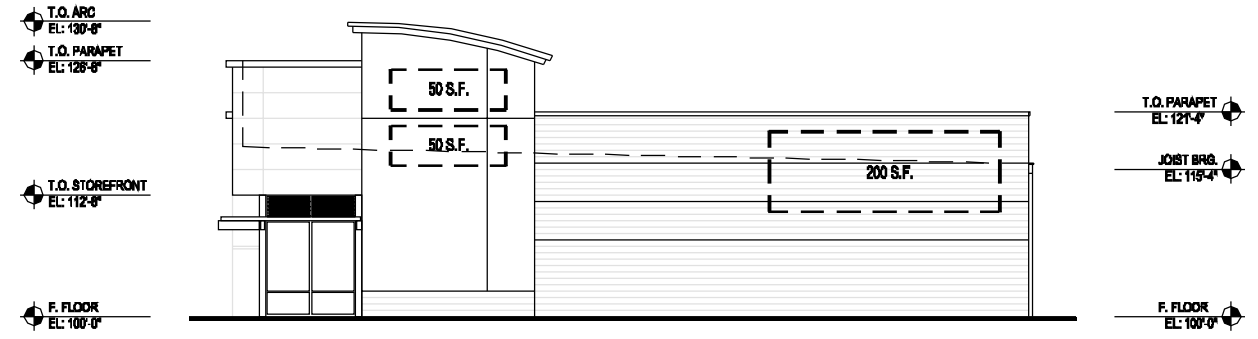


**SOUTH ELEVATION** MAXIMUM ALLOWABLE SIGNAGE AREA - 816.69 S.F.



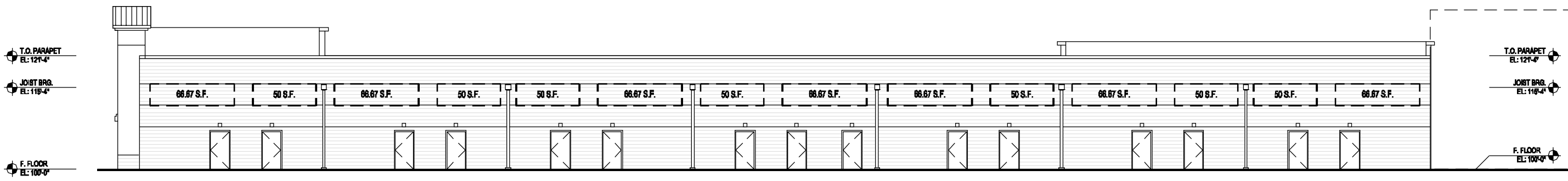
**WEST ELEVATION**

SCALE: 1" = 20'-0"



**EAST ELEVATION** MAXIMUM ALLOWABLE SIGNAGE AREA - 300 S.F.

SCALE: 1" = 20'-0"



**NORTH ELEVATION** MAXIMUM ALLOWABLE SIGNAGE AREA - 816.69 S.F.

SCALE: 1" = 20'-0"

RETAIL SHOPS  
BLACK HILLS CENTER

RAPID CITY,  
10-141

SOUTH DAKOTA  
12.03.10

ALUMINUM PANEL  
COLOR: ROW HOUSE TAN  
SW 7689

20" CHANNEL LETTERS  
COLOR: BLACK  
SIGN AREA: 38.3 S.F.

STEEL SUPPORTS  
COLOR: TRICORN BLACK  
SW 6258

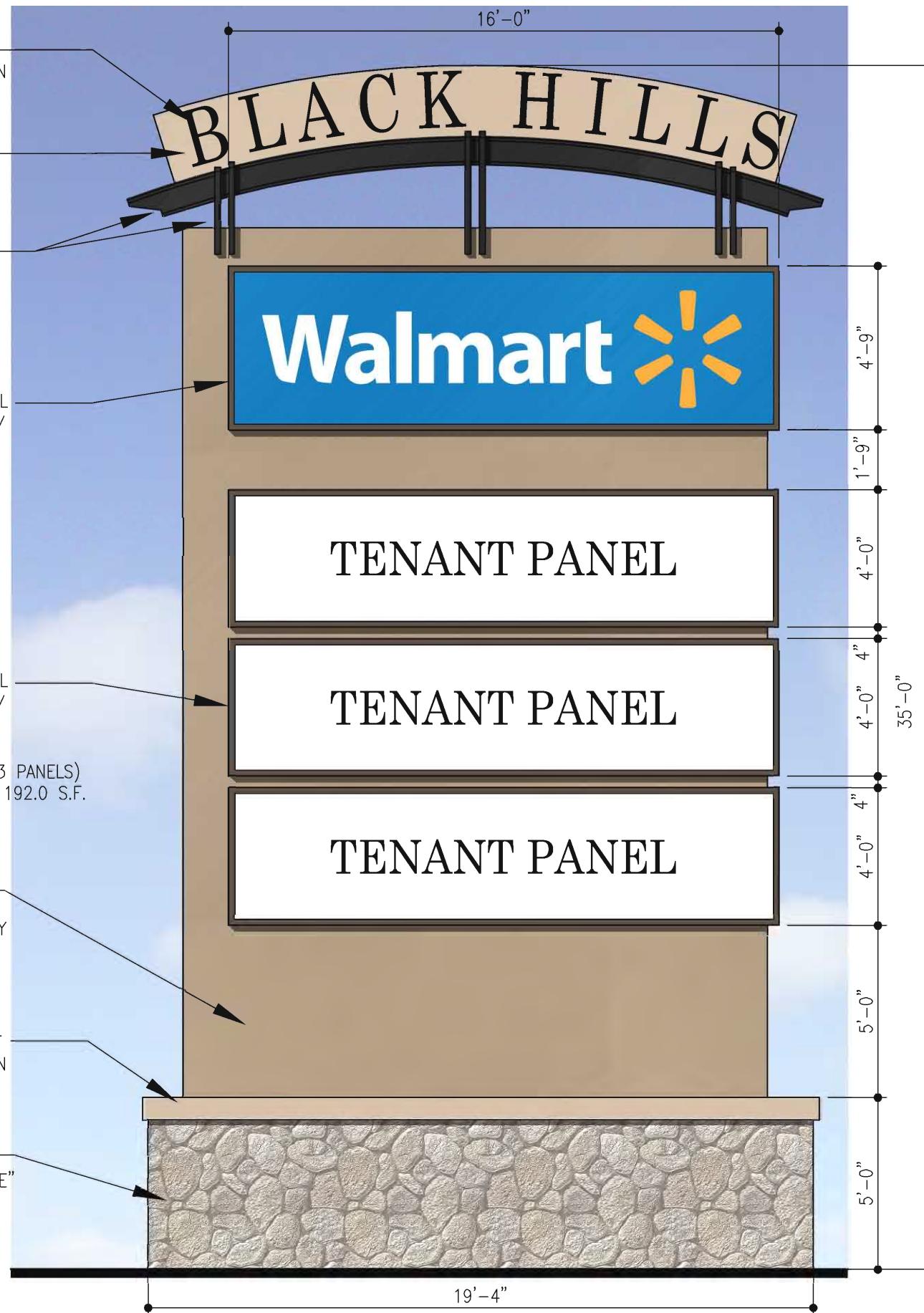
16' X 4' SIGNAGE PANEL  
TRANSLUCENT PANEL W/  
ALUMINUM FRAME  
COLOR: BRONZE  
SIGN AREA: 76.0 S.F.

16' X 4' SIGNAGE PANEL  
TRANSLUCENT PANEL W/  
ALUMINUM FRAME  
COLOR: BRONZE  
SIGN AREA: 64.0 S.F. (3 PANELS)  
SUB-TOTAL SIGN AREA: 192.0 S.F.

ALUMINUM  
SIGNAGE CABINET  
COLOR: ROOKWOOD CLAY  
SW 2823

CONCRETE CAP - PAINT  
COLOR: ROW HOUSE TAN  
SW 7689

CULTURED STONE  
"RIVER ROCK LAKESHORE"  
(TO MATCH WAL-MART)



NOTE:  
TOTAL PROPOSED SIGN AREA: 306.3 S.F.

PYLON SIGN

