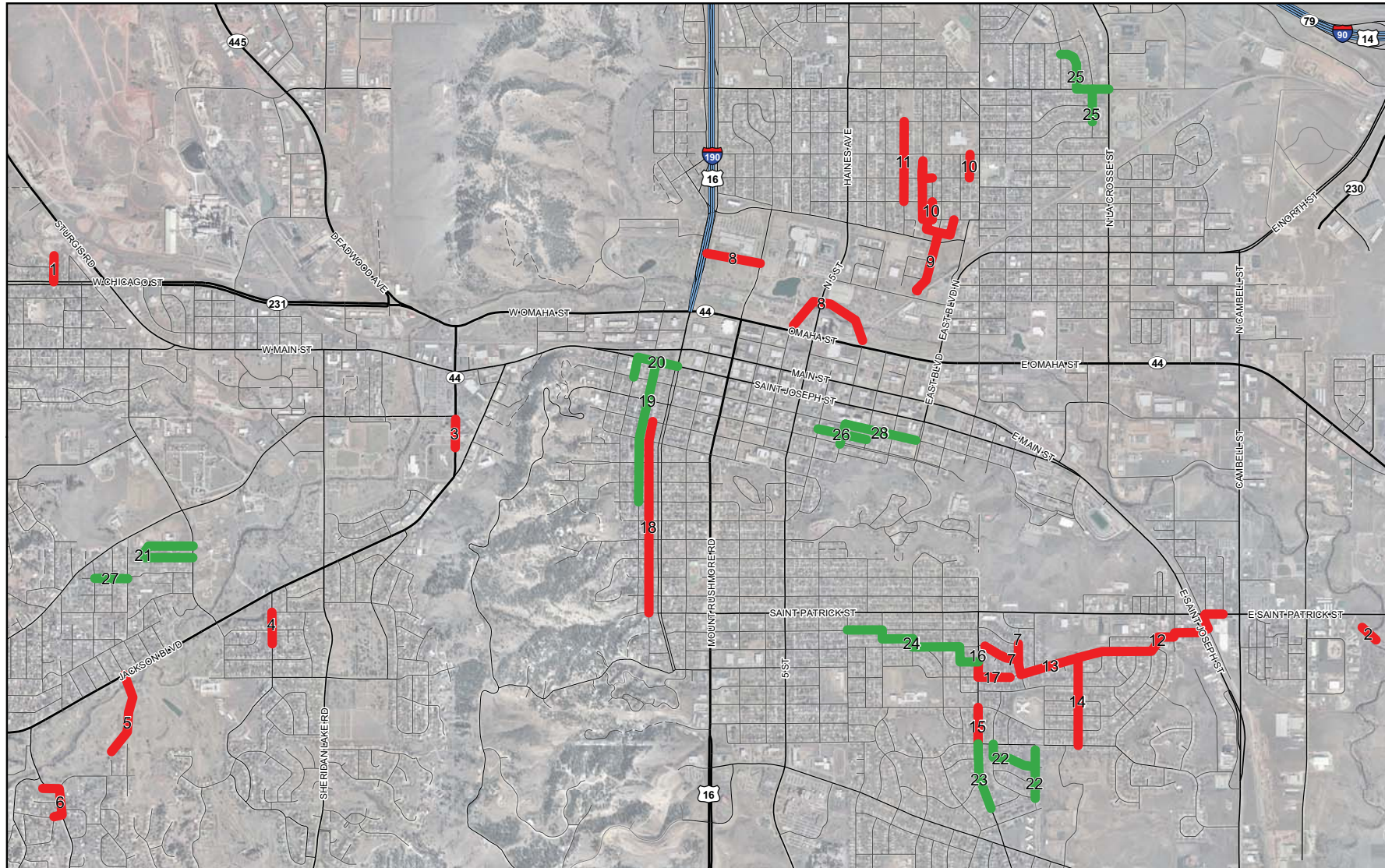


SANITARY SEWER INFLOW AND INFILTRATION PROJECT STATUS



Legend

I & I Projects

Status

Complete

CIP Established



Not to Scale

November 12, 2010

Sanitary Sewer Inflow and Infiltration Project Status

Map ID Number	Project Description	Status
1	N 39th Street North of West Chicago	Complete
2	42" Trunk Sewer Siphons Rehabilitation Project	Complete
3	Mt. View Road Utility Reconstruction, Jackson Blvd. to Omaha St	Complete
4	Central Boulevard Street and Sanitary Sewer Reconstruction	Complete
5	Meadowbrook Golf Course Utility Reconstruction Project	Complete
6	Park Drive Reconstruction	Complete
7	Robbinsdale - E. St. Francis, E. St. Anne, Birch	Complete
8	Memorial Park Sanitary Sewer Main Replacement Project	Complete
9	1st Street & Philadelphia Street Sewer Main Replacement	Complete
10	Blaine, Halley, Holcomb, East Jackson and North Maple	Complete
11	Lemon Avenue Reconstruction	Complete
12	Meade Street Sanitary Trunk Sewer Reconstruction	Complete
13	Phase 1 Meade Street Reconstruction E. Meade Street From Birch Ave to Hoefer Ct.	Complete
14	Hawthorne Avenue Street and Utilites Reconstruction Project Phase 1, Phase 2	Complete
15	Elm Avenue Reconstruction - Phase 3	Complete
16	Meade Street Reconstruction - Phase 2	Complete
17	Meade Street Reconstruction - Phase 2	Complete
18	West Blvd Sewer Reconstruction	Complete
19	From Kansas City to St. James, between 11th and 12th Street	CIP Established
20	Kansas City Street to St Joe Street - West Blvd Area	CIP Established
21	West Saint Cloud St & Harmony Lane	CIP Established
22	Robbinsdale Reconstruct Projct Ph 3	CIP Established
23	Elm Avenue Reconstruction - Phase 4	CIP Established
24	Southeast Area Trunk Sewer Reconstruction Elm to Prairie	CIP Established
25	Woodlawn Drive Sanitary Sewer Replacement	CIP Established
26	Sanitary Sewer Reconstruction Alley South of Kansas City	CIP Established
27	Leland Lane/Rushmore St Sewer/Water Main Reconstruct	CIP Established
28	Downtown Area Improvement Project Phase 3	CIP Established