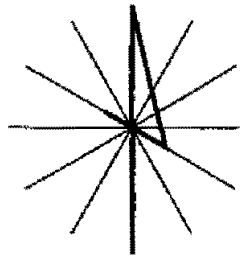


SITE PLAN AND STRUCTURE PLAN

LEGAL DESCRIPTION: BLOCK 76 OF MAHONEY ADDITION LESS THE NORTH 8.5' THEREOF
LOCATED IN THE SE1/4 SECTION 25, T2N, R7E, BHM.
RAPID CITY, PENNINGTON COUNTY, SOUTH DAKOTA.

10SV023



RECEIVED

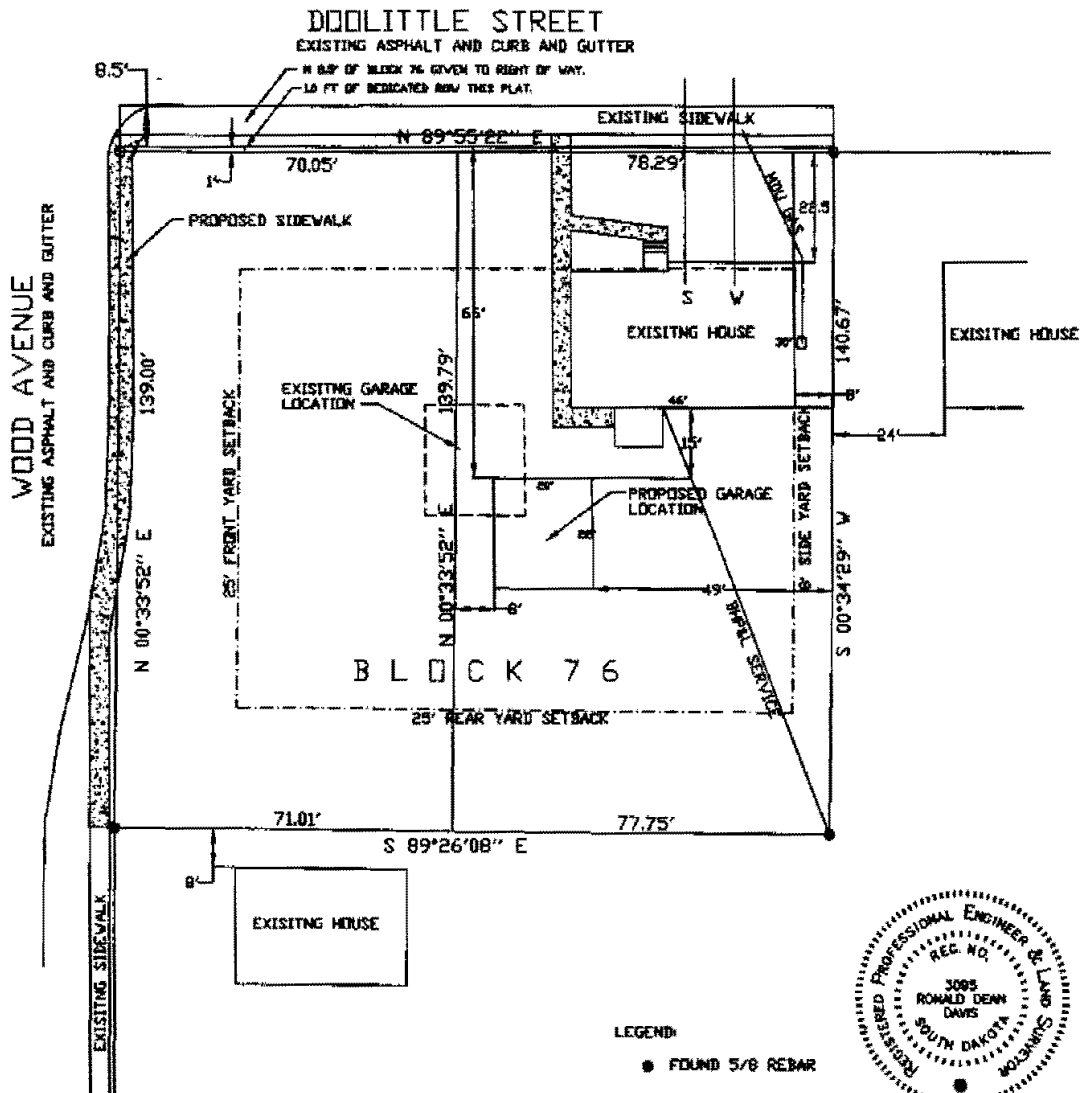
NOV 8 2010

**Rapid City Growth
Management Department**

DATE: AUG 12, 2010

SCALE: 1"=40'

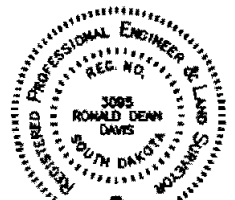
REVISED 10-8-10



LEGEND:

● FOUND 5/8 REBAR

○ SET 5/8 REBAR WITH CAP
MARKED DAVIS ENG- 3095.



I, Ronald D. Davis, Registered Land Surveyor No. 3095 of the State of South Dakota, do hereby certify that the measurements shown hereon were done by me or under my direct supervision. The building(s) shown hereon have been located using information shown on the plot of this land as recorded at the Register of Deeds office. Easements, either written or unwritten are not made part of this survey except for those shown directly on the plat.

DAVIS ENGINEERING, INC. - 1060 KINGS ROAD - RAPID CITY, SD