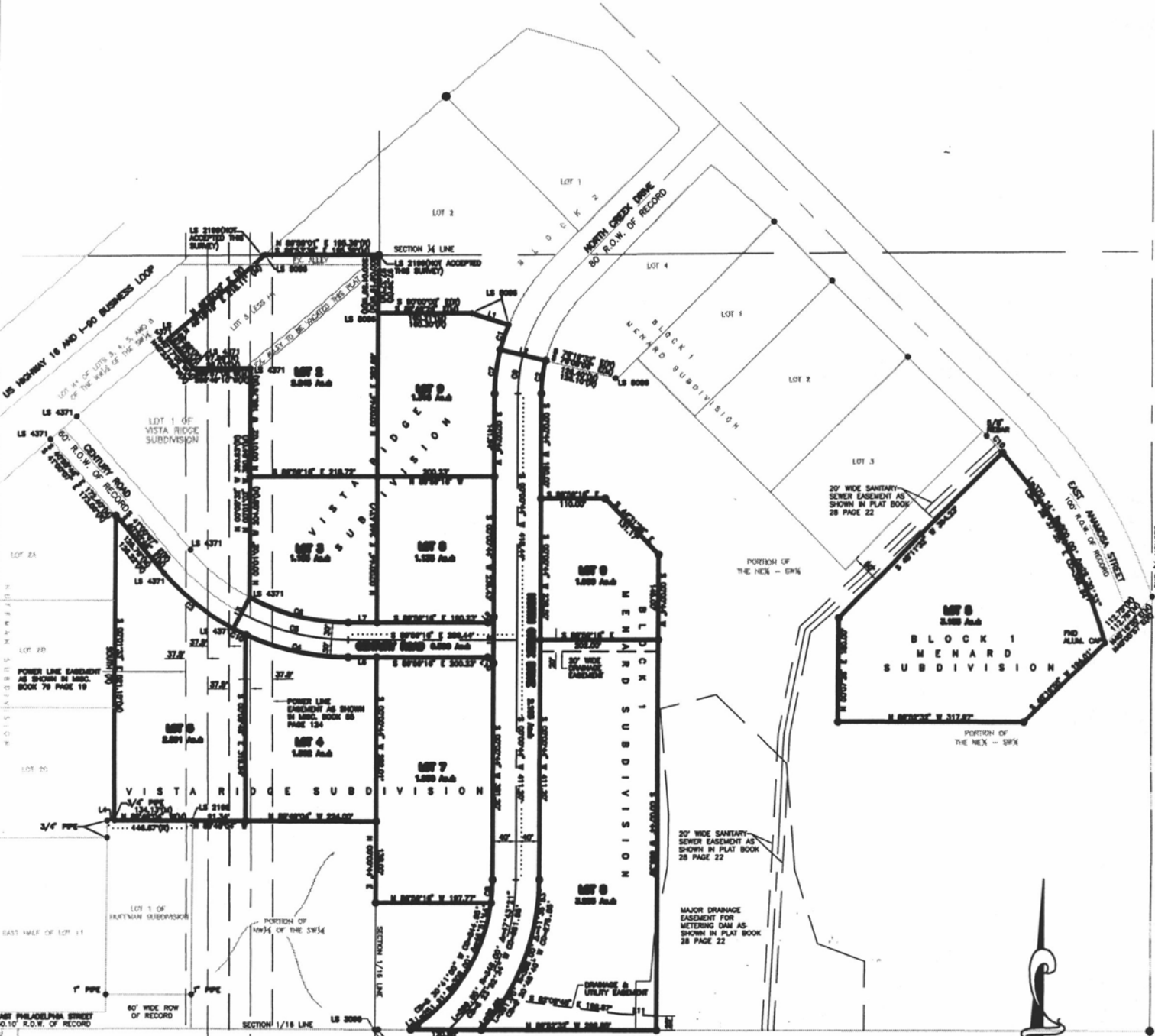


PLAT OF
LOTS 2 THROUGH 5 AND LOTS 7 THROUGH 9,
VISTA RIDGE SUBDIVISION
AND LOT 5, LOT 8 AND LOT 9 OF BLOCK 1,
MENARD SUBDIVISION

(Formerly a portion of Lot 3 and all of the adjacent alley of the NW 1/4 of the SW 1/4, Less Lot H1 of Section 32, T2N, R8E, B.H.M.,
A portion of the NW 1/4 of the SW 1/4 of Section 32, T2N, R8E, B.H.M., and a portion of the NE 1/4 of the SW 1/4 of Section 32)
LOCATED IN THE N 1/2 OF THE SW 1/4 OF SECTION 32, T2N, R8E, B.H.M.,
RAPID CITY, PENNINGTON COUNTY, SOUTH DAKOTA



RECEIVED

AUG 05 2010

Rapid City Growth
Management Department

MARCH 31, 2010
N.T.S.