

PLAT OF LOT PE2

RECEIVED

JUL 30 2009

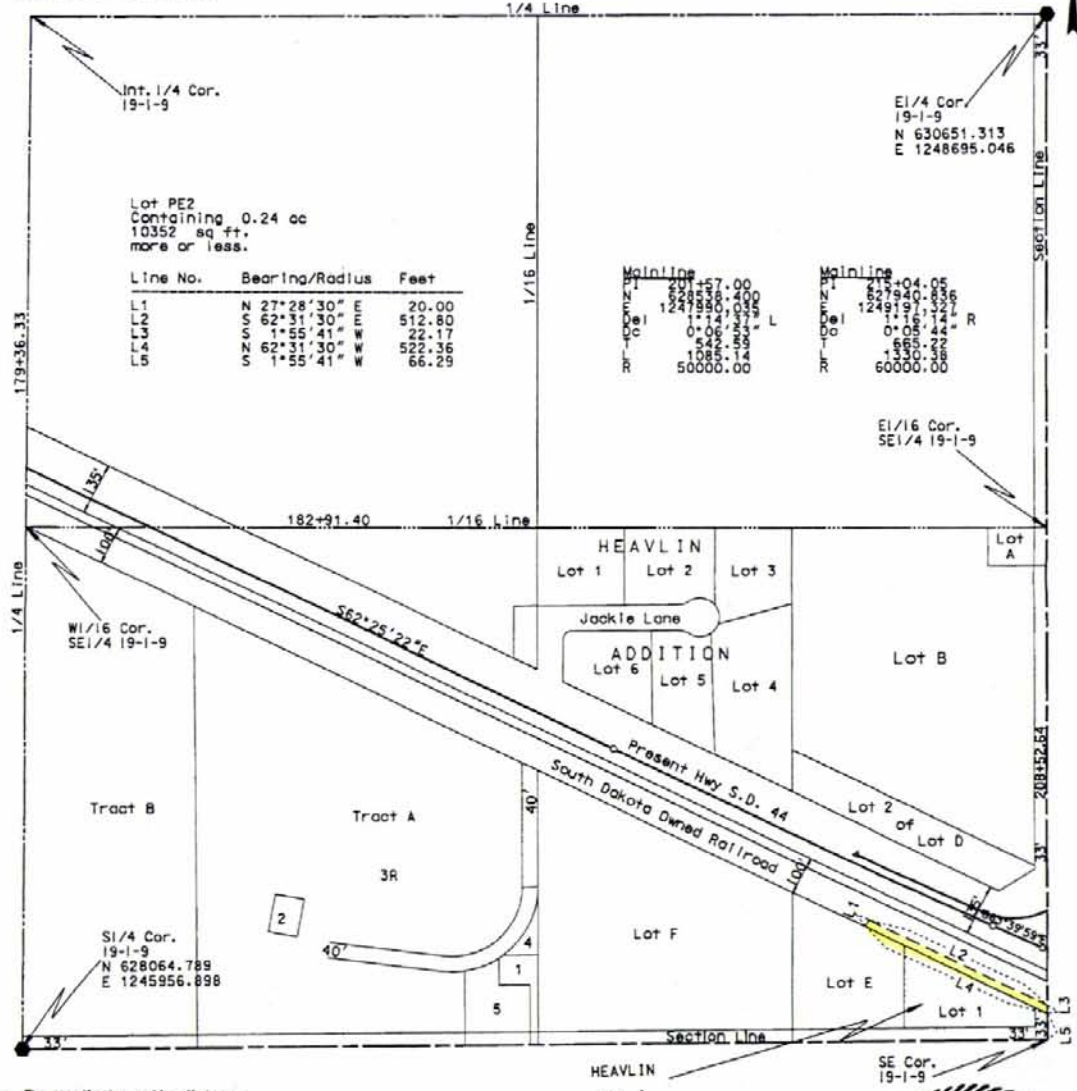
Showing a permanent easement to be acquired for private access in Railroad R.O.W. in the SE1/4 of Section 19 Township 1 North - Range 9 East of the S.H.M. for construction of Project P 0044152150

PENNINGTON COUNTY, SOUTH DAKOTA

Scale: 1 inch = 300 feet

Rapid City Growth Management Dept

LEGEND
● = found corner
○ = set corner
■ = reset found corner
All monumentation will be set upon project completion



Lot PE2
Containing 0.24 ac
10352 sq. ft.
more or less.

Table with 3 columns: Line No., Bearing/Radius, Feet. Contains lines L1 through L5.

Two tables labeled 'Mainline' with columns for 'L' and 'R' bearings and distances.

Note: The coordinates and/or distances shown on this plat are based on the South Dakota State Plane coordinate system - South Zone NAD 83/86 SF = 0.99978090

Drawn by JAN W. FLICKENW... Checked by Cindy S.

SURVEYOR'S CERTIFICATE

I, FRED LERTCH, Registered Land Surveyor, in and for the State of South Dakota, do hereby certify that the Dakota Department of Transportation the parcel of land as shown on this plat has been surveyed at my direction and under my control, and such parcel of land shall be hereafter known by the lot number designated herein. The location and dimensions of the parcel are shown on this plat.

In witness whereof, I have set my hand and seal this 21 day of July, A.D., 2009.

Registered Land Surveyor Registration No. 6576



State of South Dakota
County of Pennington as # 12895 \$10.00

Filed for record the 28 day of July, A.D., 2009, at 10:56 A.M. and recorded in Books of Plats 12 on Page 2

Donna Magnus Register of Deeds by Darlene Fite Deputy