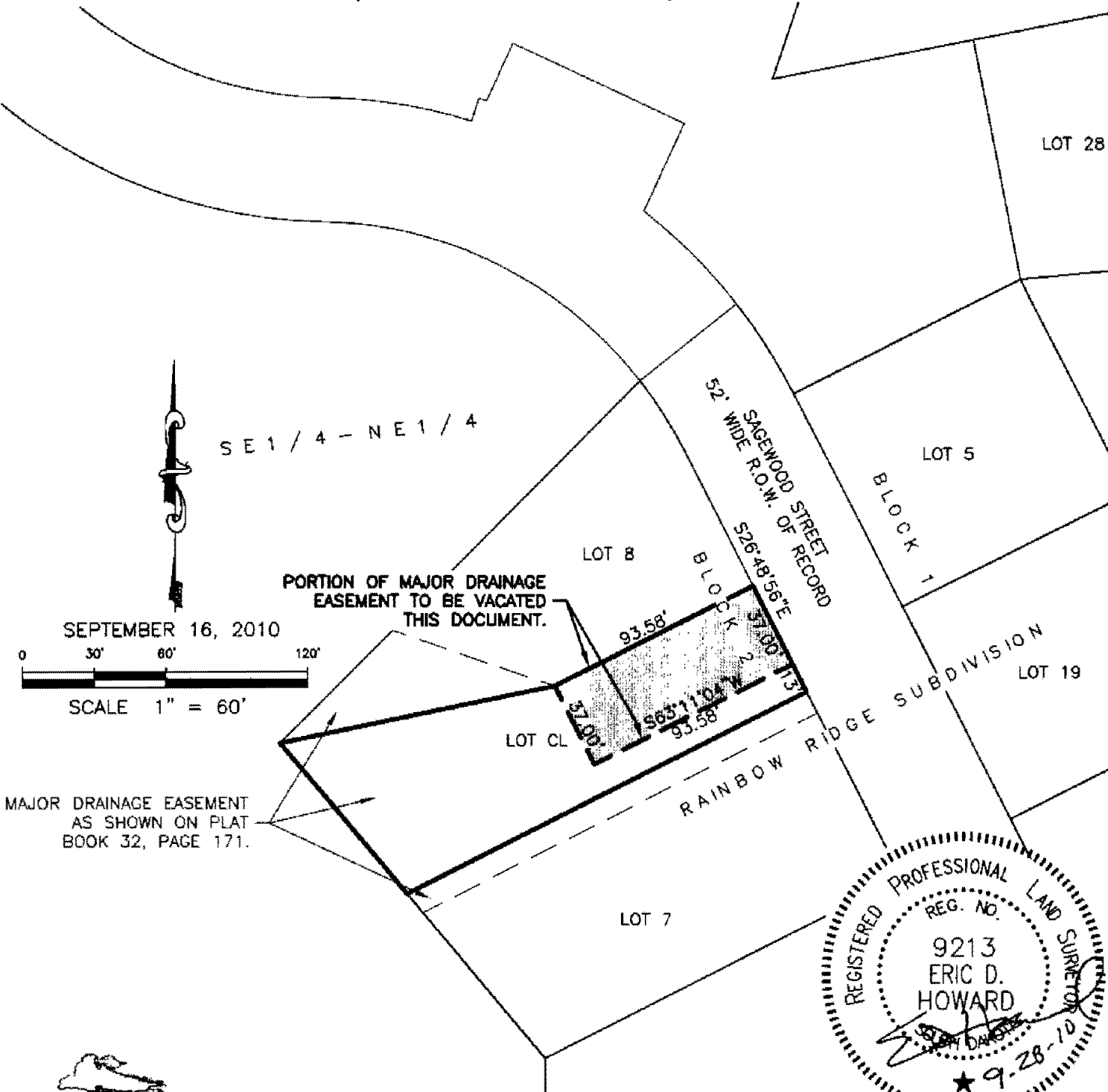


# VACATION OF PORTION OF MAJOR DRAINAGE EASEMENT LOCATED IN LOT-CL OF BLOCK 2 OF RAINBOW RIDGE SUBDIVISION

10VE012

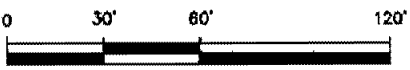
LOCATED IN THE SE1/4 OF THE NE1/4 OF  
SECTION 23, T2N, R7E, BHM  
RAPID CITY, PENNINGTON COUNTY, SOUTH DAKOTA



SE 1 / 4 - NE 1 / 4

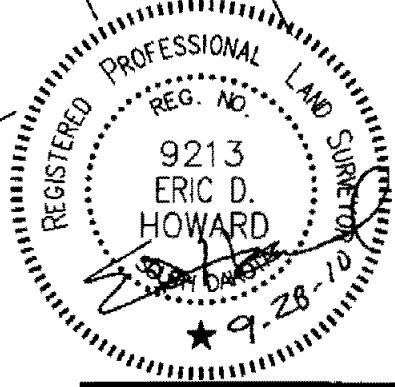
PORTION OF MAJOR DRAINAGE  
EASEMENT TO BE VACATED  
THIS DOCUMENT.

SEPTEMBER 16, 2010



SCALE 1" = 60'

MAJOR DRAINAGE EASEMENT  
AS SHOWN ON PLAT  
BOOK 32, PAGE 171.



## RENNER & ASSOCIATES, LLC.

616 SIXTH ST. \* RAPID CITY, SD 57701  
PHONE: 605/721-7310 FAX: 605/721-7313  
SPEARFISH OFFICE: 605/717-0016

PREPARED FOR:  
DREAM DESIGN INTERNATIONAL, INC.  
528 KANSAS CITY STREET, STE. 4  
RAPID CITY, SD 57701  
(605) 348-0538



CITY HALL 1903