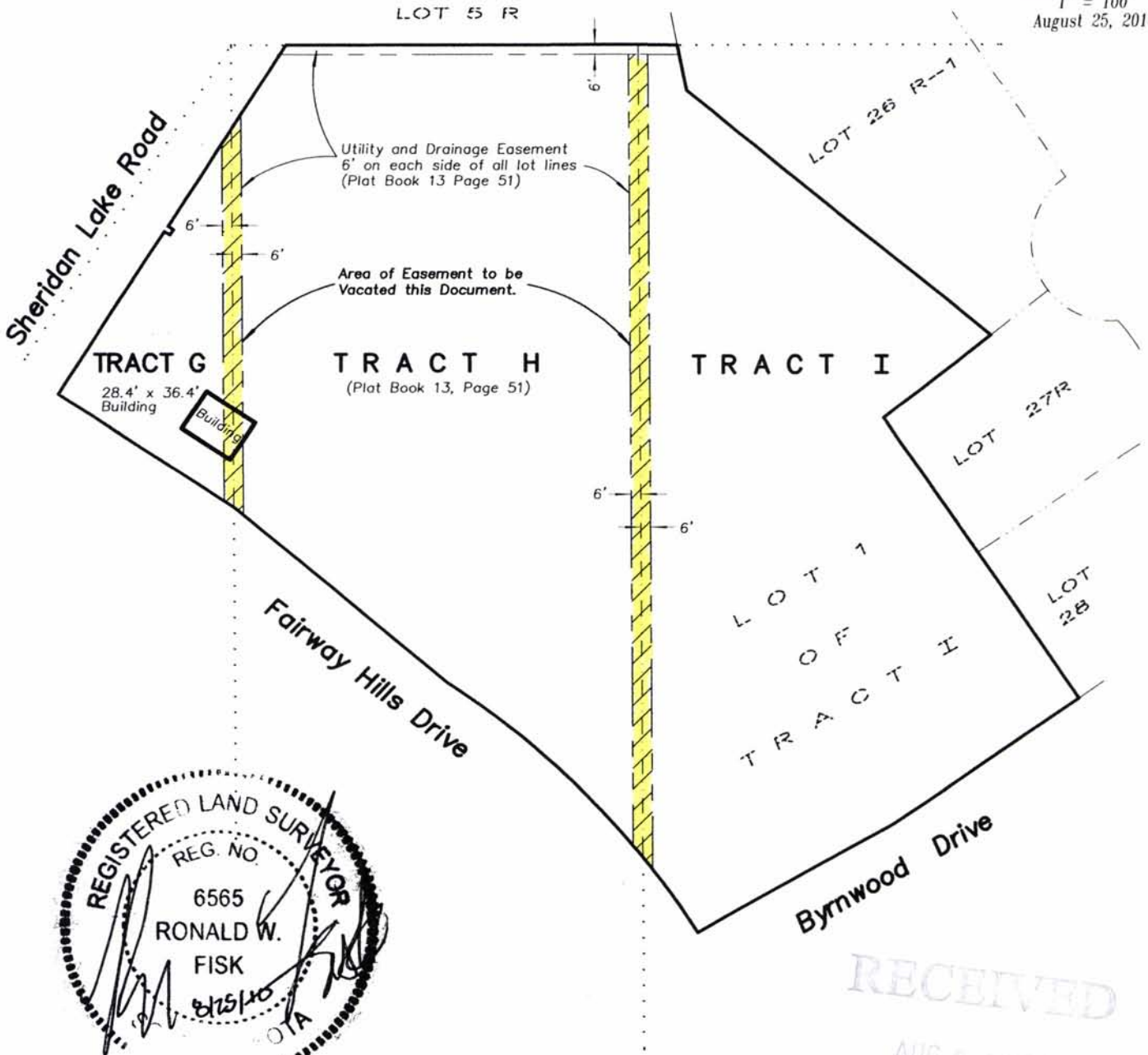
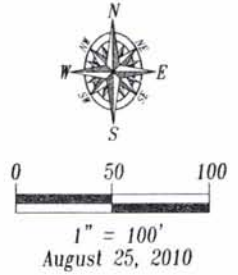


# EXHIBIT A 10VE011

## VACATION OF PORTIONS OF UTILITY & DRAINAGE EASEMENT

Located in Tracts G, H and I of Arrowhead View Addition  
In the S 1/2 NW 1/4 of Section 15, T1N, R7E, BHM,  
Rapid City, Pennington County, South Dakota



RECEIVED  
AUG 25 2010  
Rapid City Growth  
Management Department