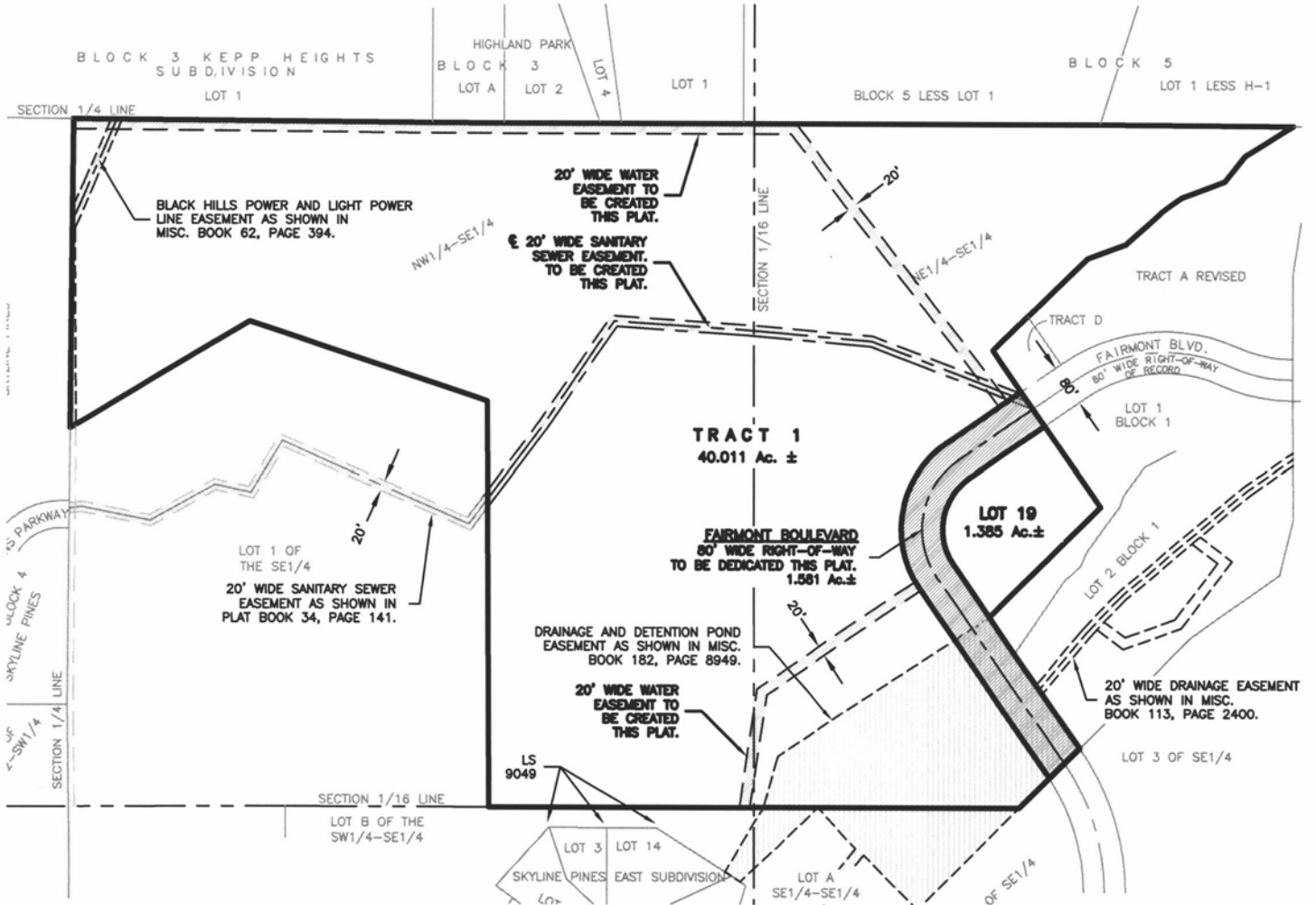


# PLAT OF TRACT 1, LOT 19, AND DEDICATED FAIRMONT BOULEVARD RIGHT-OF-WAY SKYLINE PINES EAST SUBDIVISION

(formerly a portion of the N1/2 of the SE1/4)  
LOCATED IN THE N1/2 OF THE SE1/4,  
SECTION 11, T1N, R7E, BHM  
RAPID CITY, PENNINGTON COUNTY, SOUTH DAKOTA



CITY HALL 1903

## RENNER & ASSOCIATES, LLC.

616 SIXTH ST. \* RAPID CITY, SD 57701  
PHONE: 605/721-7310 \* FAX: 605/721-7313  
EMAIL: GARY@RENNERASSOC.COM



N.T.S.