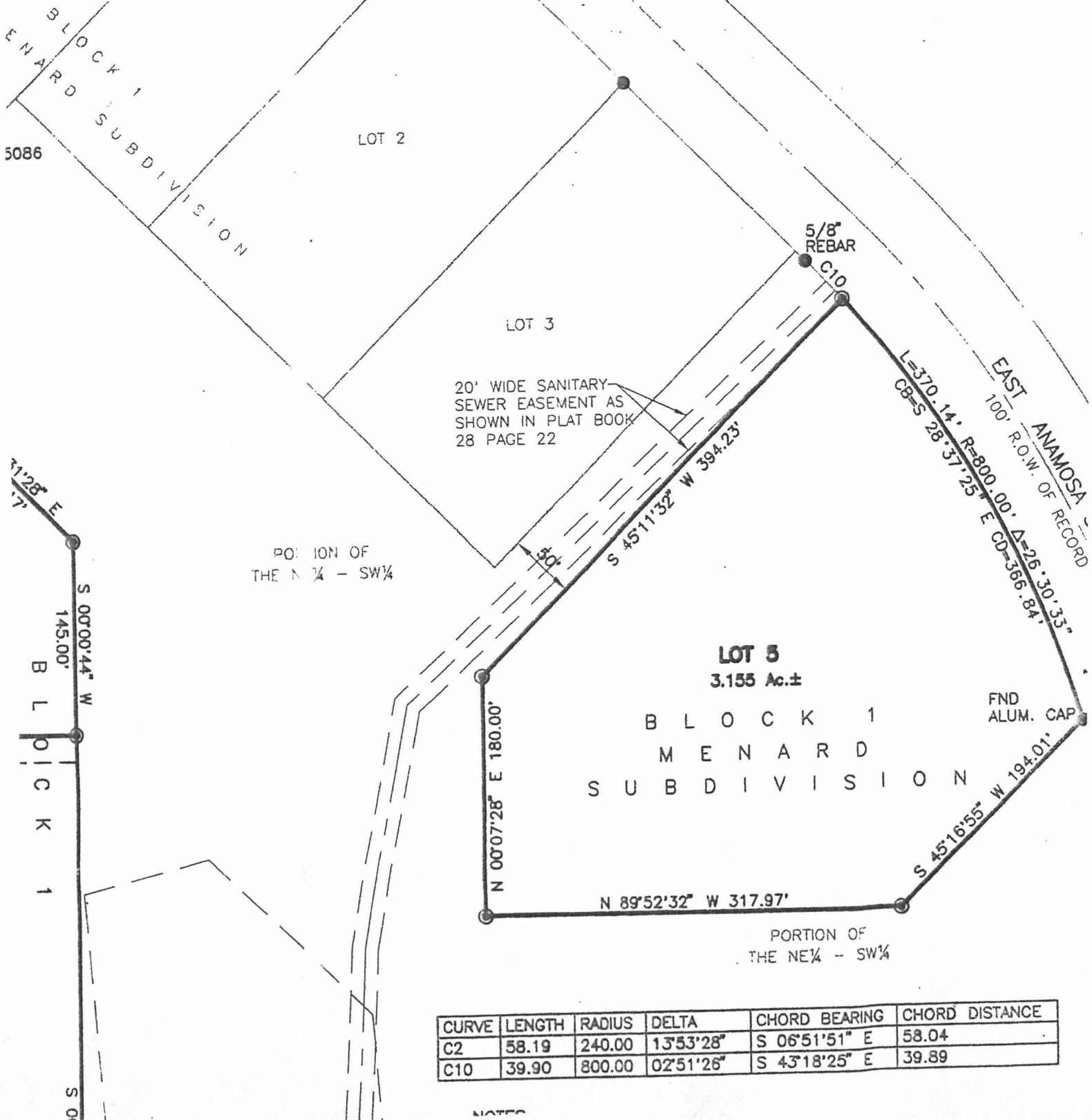


PLAT OF  
**LOTS 2 THROUGH 5 AND LOTS 7 THROUGH 9,  
 VISTA RIDGE SUBDIVISION  
 AND LOT 5, LOT 8 AND LOT 9 OF BLOCK 1,  
 MENARD SUBDIVISION**

ion of Lot 3 and all o the adjacent alley of the NW<sup>1</sup>/<sub>4</sub> of the SW<sup>1</sup>/<sub>4</sub>, Less Lot H1, of Se  
 the NW<sup>1</sup>/<sub>4</sub> of the SW<sup>1</sup>/<sub>4</sub> of Section 32, T2N, R8E, B.H.M., and a portion of the NE<sup>1</sup>/<sub>4</sub> of tl  
 LOCATED IN THE N<sup>1</sup>/<sub>2</sub> OF THE SW<sup>1</sup>/<sub>4</sub> OF SECTION 32, T2N, R8E, B.H.M.,  
 RAPID CITY, PENNINGTON COUNTY, SOUTH DAKOTA



CURVE	LENGTH	RADIUS	DELTA	CHORD BEARING	CHORD DISTANCE
C2	58.19	240.00	13°53'28"	S 06°51'51" E	58.04
C10	39.90	800.00	02°51'26"	S 43°18'25" E	39.89

NOTES