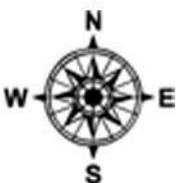
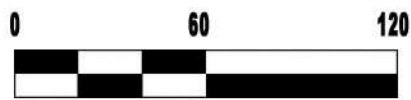


Future development to include up to 24,000 SF total floor area

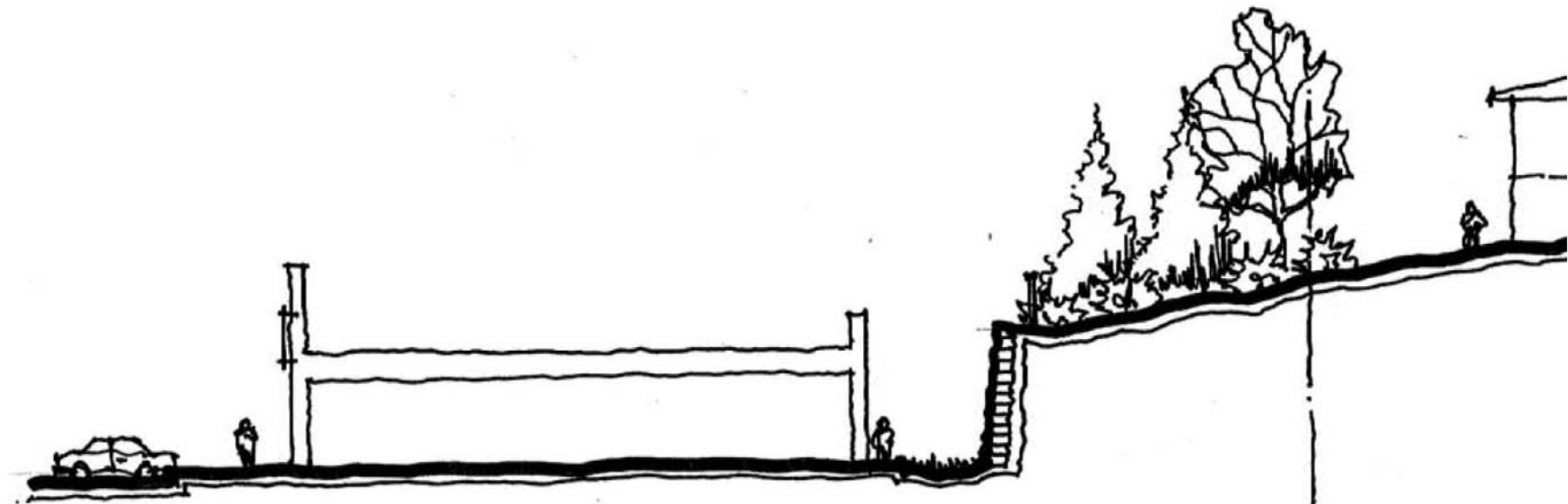
Inside Outside  
**ARCHITECTURE**  
 Inc.  
 18601 152nd Ave N. Dayton | MN | 55327



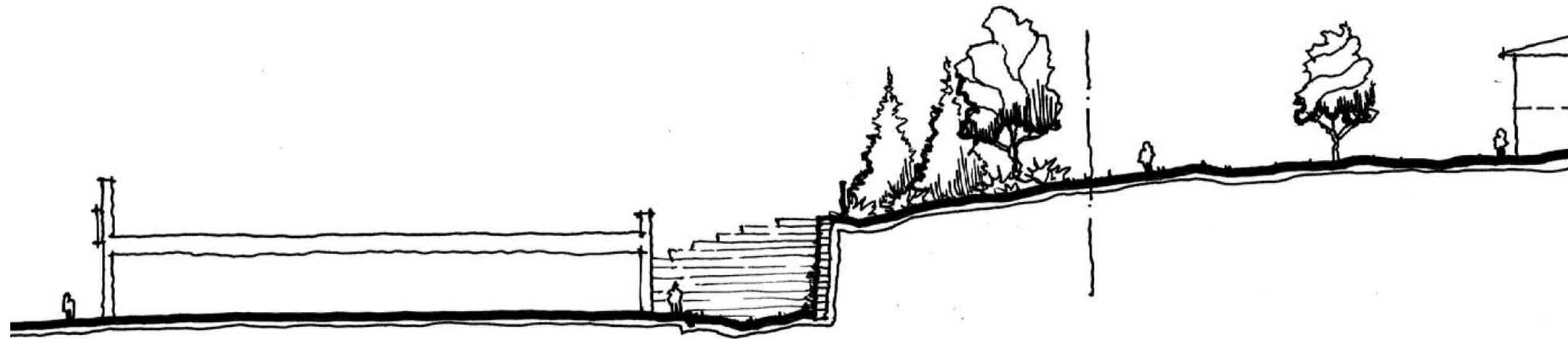
**Commercial Development**  
**Sheridan Lake Road and Fairway Hills Drive**

# Site Plan

Revised September 30, 2010



Section looking toward Fairway Hills Drive



Building section cut at a diagonal

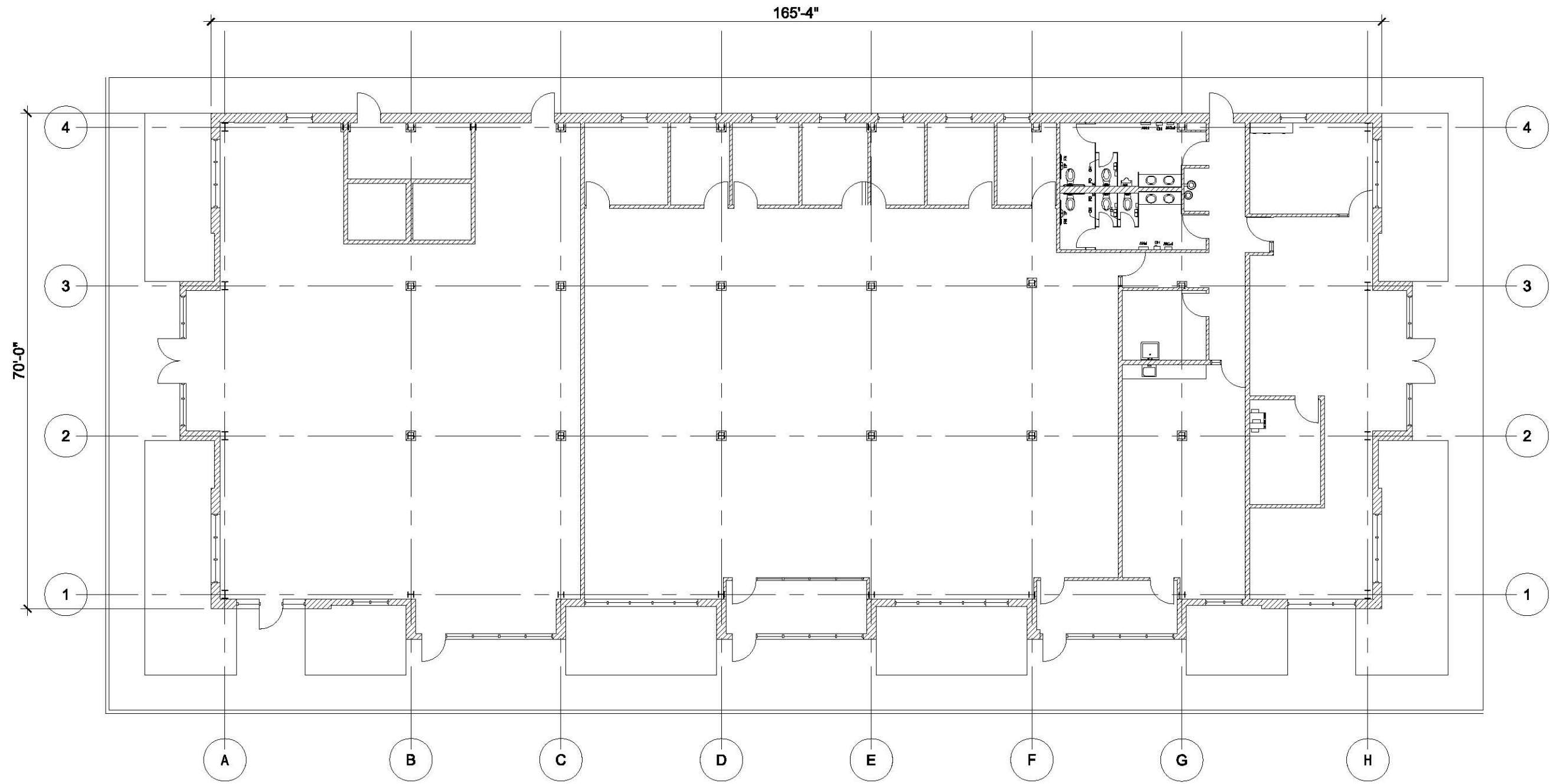
Section looking toward Sheridan Lake Road

*Inside Outside*  
**ARCHITECTURE**  
*Inc.*  
18601 152nd Ave N. Dayton | MN | 55327

**Commercial Development**  
**Sheridan Lake Road and Fairway Hills Drive**  
**Preliminary not for construction**

# Site Sections

September 29, 2010



SCHMATIC FLOOR PLAN - 12,023 SF FOOTPRINT

*Inside Outside*  
**ARCHITECTURE**  
*Inc.*  
 18601 152nd Ave N. Dayton | MN | 55327

**Commercial Development**  
**Sheridan Lake Road and Fairway Hills Drive**  
**Preliminary not for construction**

**Building Plan**  
 September 29, 2010



*Inside Outside*  
**ARCHITECTURE**  
inc.  
18601 152nd Ave N. Dayton | MN | 55327

**Commercial Development**  
**Sheridan Lake Road and Fairway Hills Drive**  
**Preliminary not for construction**

# Building Elevation

September 29, 2010

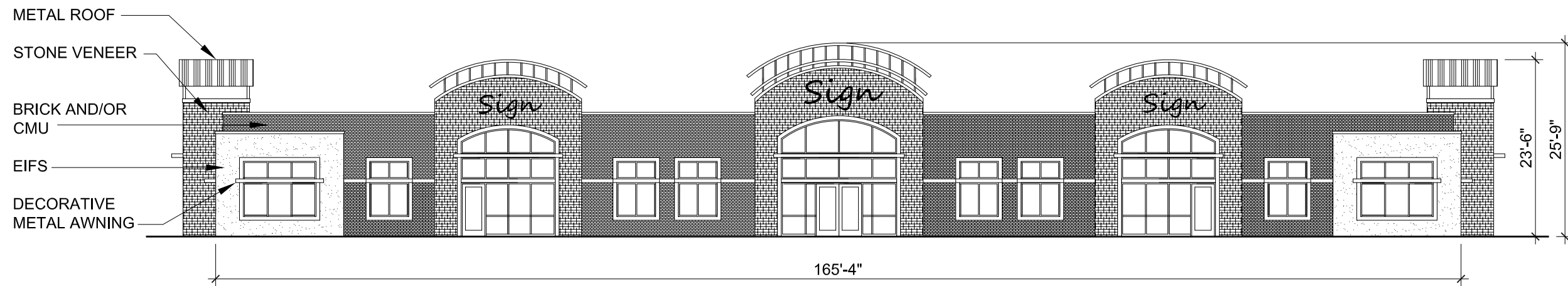


*Inside Outside*  
**ARCHITECTURE**  
Inc.  
18601 152nd Ave N. Dayton | MN | 55327

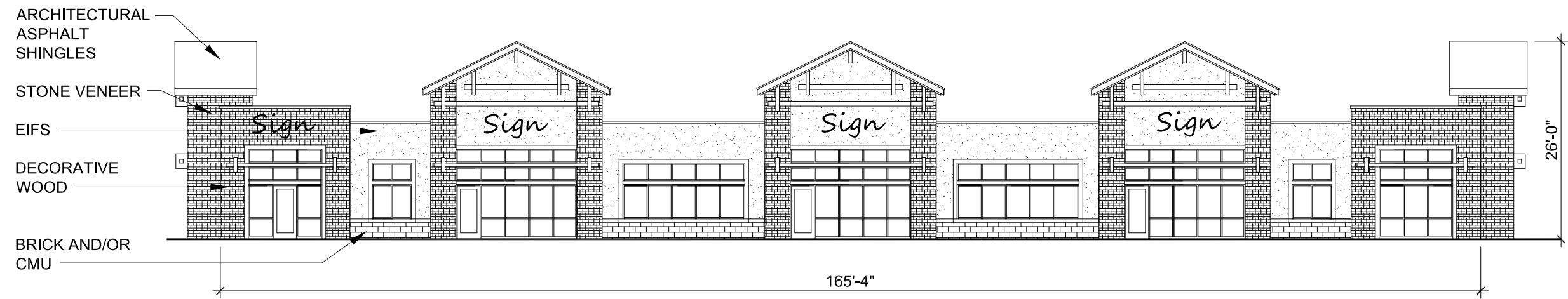
**Commercial Development**  
**Sheridan Lake Road and Fairway Hills Drive**  
**Preliminary not for construction**

# Building Elevation

September 29, 2010



SCHEMATIC ELEVATION OPTION A  
 COMMERCIAL DEVELOPMENT @ FAIRWAY HILLS DRIVE & SHERIDAN LAKE ROAD  
 9-29-2010  
 PRELIMINARY NOT FOR CONSTRUCTION  
 $\frac{1}{16}'' = 1'-0''$



SCHEMATIC ELEVATION OPTION B  
 COMMERCIAL DEVELOPMENT @ FAIRWAY HILLS DRIVE & SHERIDAN LAKE ROAD  
 9-29-2010  
 PRELIMINARY NOT FOR CONSTRUCTION  
 $\frac{1}{16}'' = 1'-0''$