



CITY OF RAPID CITY

RAPID CITY, SOUTH DAKOTA 57701

Public Works Department Engineering Services Division


300 Sixth Street

Telephone: (605) 394-4154 FAX: (605) 355-3083

Web: www.rcgov.org

MEMORANDUM

TO: Public Works Committee, Mayor Hanks, Common Council

FROM: Dale Tech PE/LS, City Engineer 

SUBJECT: Request by THF Realty to install and maintain decorative street lighting on Stumer Road from Fifth Street to Black Hills Boulevard

DATE: August 27, 2010

THF Realty has requested to install and maintain decorative street lights on Stumer Road from Fifth Street to Black Hills Boulevard as part of the commercial development proposed for that area. Attached are details of the lighting as well as a location map. THF will enter into a covenant agreement for the maintenance of the lights which will be executed at the time of their final development plan approval. Staff recommends approval of the request to install and maintain decorative street lights.



EQUAL HOUSING
OPPORTUNITY

EQUAL OPPORTUNITY EMPLOYER



August 27, 2010

Public Works Committee
and Rapid City Council
c/o Dale Tech
City of Rapid City
300 Sixth Street
Rapid City, South Dakota 57701

RE: Stumer Road Decorative Lighting System

Dear Dale,

Pursuant to our conversation on August 26, 2010, please allow this letter to serve as the formal request before the Public Works Committee and the City Council of THF Stoneridge Development, L.L.C. to install and maintain the proposed Stumer Road Decorative Lighting System delivered under separate cover.

This was also identified in the initial plan development submittal as stipulation #8.

As the applicant we are agreeable to this stipulation and are willing to enter into a covenant agreement with the City securing the maintenance of the proposed decorative street lighting system.

Should you require anything further, please do not hesitate to call.

Kindest Regards,
THF Realty, Inc.

A handwritten signature in blue ink, appearing to read 'Robert Green', is written over the typed name.

Robert Green

RG/slg

Enclosures

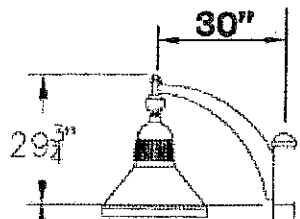
CC: Michael Staenberg

Development | Leasing | Management

2127 Innerbelt Business Center Dr.
Suite 200
St. Louis, MO 63114
314.429.0900 *phone*
314.429.0999 *fax*
www.thfrealty.com



STUMER AVE.



24'-0"

7 1/8"

BEARING PLATE
SKIRT ASSEMBLY

Customer Approval

sign
&
date

Post: EPSX 24 S5S7 4-3/8T8 ANBK
 Arm: EAL5/2 ANBK
 Luminaire: (2)EM25FT 400M MOG GCF SR5S TB ANBK

Accessories: TRANSPO ASSY WITH SKIRT ANBK

Eurot PW083110-33

Steel Post

Post: EPSX 24 S5S7 4-3/8T8 ANBK

Post shall be all steel construction consisting of a stepped steel shaft from $\varnothing 7"$ to $\varnothing 5"$ with a $\varnothing 4 \frac{3}{8}" \times 8"$ tenon for arm mounting. A handhole is located in the shaft for wiring access. A two piece anchor plate cover is provided.

Arm: EAL5/2 ANBK

Arm shall be all aluminum construction consisting of a post filler with cap, cast arm and a cast plumbizer assembly with $1 \frac{1}{2}"$ NP fitting with cap.

Luminaire: EM25FT 400M MOG GCF SR5S TB ANBK

Luminaire shall be $\varnothing 25" \times 23"$ tall with a cast aluminum housing and a clear flat glass lens. Luminaire shall be furnished with a high intensity discharge ballast and a socket assembly, an IES type 5S aluminum reflector.

Lamp Type	Metal Halide	High Pressure Sodium	Voltage
HID Socket Size	<input type="checkbox"/> - 50M	<input type="checkbox"/> - 35S	<input type="checkbox"/> /120
	<input type="checkbox"/> - 70M	<input type="checkbox"/> - 50S	<input type="checkbox"/> /208
<input type="checkbox"/> - MED	<input type="checkbox"/> - 100M	<input type="checkbox"/> - 70S	<input type="checkbox"/> /240
	<input type="checkbox"/> - 150M	<input type="checkbox"/> - 100S	<input type="checkbox"/> /277
<input checked="" type="checkbox"/> - MOG	<input type="checkbox"/> - 175M	<input type="checkbox"/> - 150S	<input type="checkbox"/> /480
	<input checked="" type="checkbox"/> - 400M	<input type="checkbox"/> - 250S	<input checked="" type="checkbox"/> /TB

Accessories:

Transpo Assembly - $1 \frac{1}{2}"$ breakaway couplings with nuts and washers and top plate with concealment skirt.

Anchorage:

Post shall be furnished with (4) $1 \frac{1}{2}"$ hot-dip galvanized L-type anchor bolts.

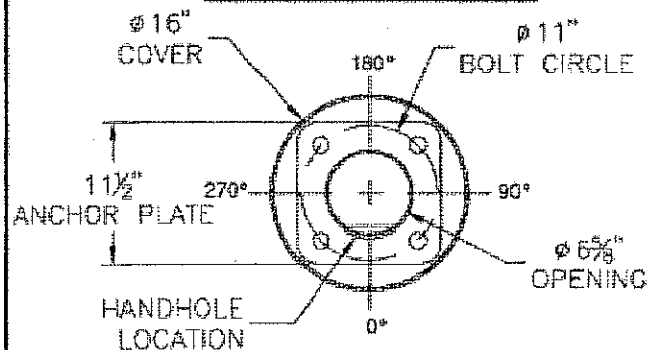
Finish:

Post, arm and luminaire shall be furnished with a black powder coat finish.

Windload

Post assembly is 45% loaded at 100mph using aashto 1994 fast wind mile or 115mph aashto 2001, 3 second gust wind speed.

Anchorage Detail



Note:

All hardware shall be stainless steel. All easily accessible exterior hardware shall be tamper resistant.

Post Height: 24'-0"
 Base Size: $\varnothing 16"$

Overall Height: 27'-0 3/4"
 Top Light Center: 24'-11"

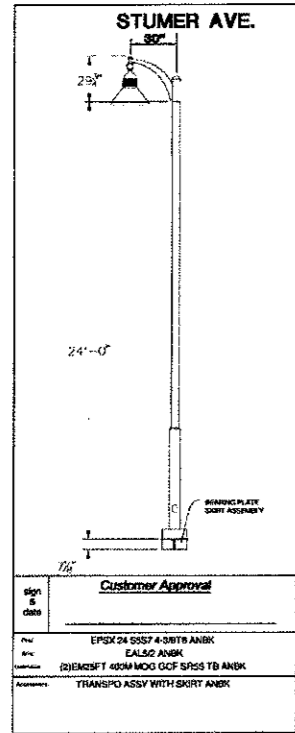
date: 8/16/10

scale: NTS

drawn: L-8196A

ANTIQUÉ Street Lamps

One Lithonia Way
 PMD, Building Three (770) 860-3747
 Conyers, GA 30012 (770) 860-3712



Eurotique Series
Street Post

Post shall be all steel construction consisting of a stepped steel shaft from 60" to 250" with a 4" x 4" base for some mounting. A hand-hole is located in the shaft for wiring access. A two piece interior pipe cover is provided.

Height: 24'-11 1/2" ANBK

Arm shall be all aluminum construction consisting of a post foot with cap, cast arm and a cast luminaire assembly with 1 1/2" NPT fitting with cap.

Luminaire: EM25FT 400W MOG GCF SR5 TB ANBK
Luminaire shall be 600" x 23" tall with a cast aluminum housing and clear hot glass lens. Luminaire shall be furnished with a high intensity discharge ballast and a socket assembly, an ICS type SS aluminum reflector.

Lamp Type	Height	Flux (Footcandle)	Voltage
400W MOG	11'-00"	111-335	277V
400W MOG	13'-00"	111-335	277V
400W MOG	15'-00"	111-335	277V
400W MOG	17'-00"	111-335	277V
400W MOG	19'-00"	111-335	277V
400W MOG	21'-00"	111-335	277V
400W MOG	23'-00"	111-335	277V
400W MOG	25'-00"	111-335	277V

Accessories:
Yampro Assembly - 1 1/2" breaker/cap with nuts and washers and top plate with construction slot.

Anchor Detail:
Post shall be furnished with (4) 1 1/2" hot-dip galvanized L-type anchor bolts.

Post, arm and luminaire shall be finished with a black powder coat finish.

Post assembly is 45% loaded at 100mph using anemometer 1984 but wind mile or 11 mph anemometer 2001, 3 second gust wind speed.

Anchorage Detail:
Anchor bolts shall be stainless steel. All easily accessible exterior hardware shall be tamper resistant.

Post Height: 24'-0"
Base Size: 6" x 4"
Overall Height: 27'-0 1/2"
Top Light Center: 24'-11 1/2"

81610 NTS L-8196A

ANTIQUE Street Lamps
One Lighthouse Way
M.D. Building Three
Conyers, GA 30612 (770) 880-3747 (770) 888-3712

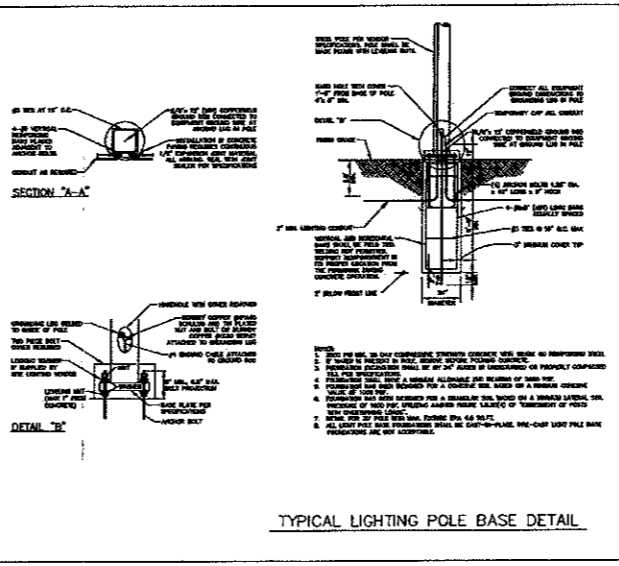
MUNICH SERIES Large Luminaires

EUROTIQUE Architectural Lighting

ORDERING INFORMATION
Specify the following column information for each luminaire used on the project and on the specification.

Order #	Manufacturer	Model #	Material	Finish	Options
EM25FT 400W MOG GCF SR5 TB ANBK	EMCO	EM25FT 400W MOG GCF SR5 TB ANBK	Aluminum	Black	None
EM25FT 400W MOG GCF SR5 TB ANBK	EMCO	EM25FT 400W MOG GCF SR5 TB ANBK	Aluminum	Black	None

Notes:
1. All luminaire housings shall be furnished with a tamper resistant cap.
2. Luminaire housings shall be furnished with a tamper resistant cap.
3. Luminaire housings shall be furnished with a tamper resistant cap.
4. Luminaire housings shall be furnished with a tamper resistant cap.
5. Luminaire housings shall be furnished with a tamper resistant cap.



LOCATION MAP
NOT TO SCALE

THE SITE IS LOCATED IN THE SW/4 OF THE NE/4, OR NW/4 OF THE SW/4 OF THE NE/4 AND IN THE SE/4 OF THE NE/4, SECTION 24, T4N, R3E, S4M, RHD CITY, PENNINGTON COUNTY, SOUTH DAKOTA.

UTILITY PLAN LEGEND

- USE — ELECTRICAL CONDUIT
- UST — TELEPHONE CONDUIT
- SCS — SANITARY SEWER PIPE
- W — WATER MAIN PIPE
- DW — DOMESTIC WATER PIPING
- GAS — GAS PIPE
- TS — TAMPER SWITCH CONDUIT
- ⊕ TAPPING SLEEVE & VALVE
- ⊕ WATER VALVE
- ⊕ FIRE HYDRANT
- ⊕ THREIST BLOCK
- ⊕ SANITARY SEWER MANHOLE
- ⊕ POWER POLE
- ⊕ GAS METER

RECEIVED

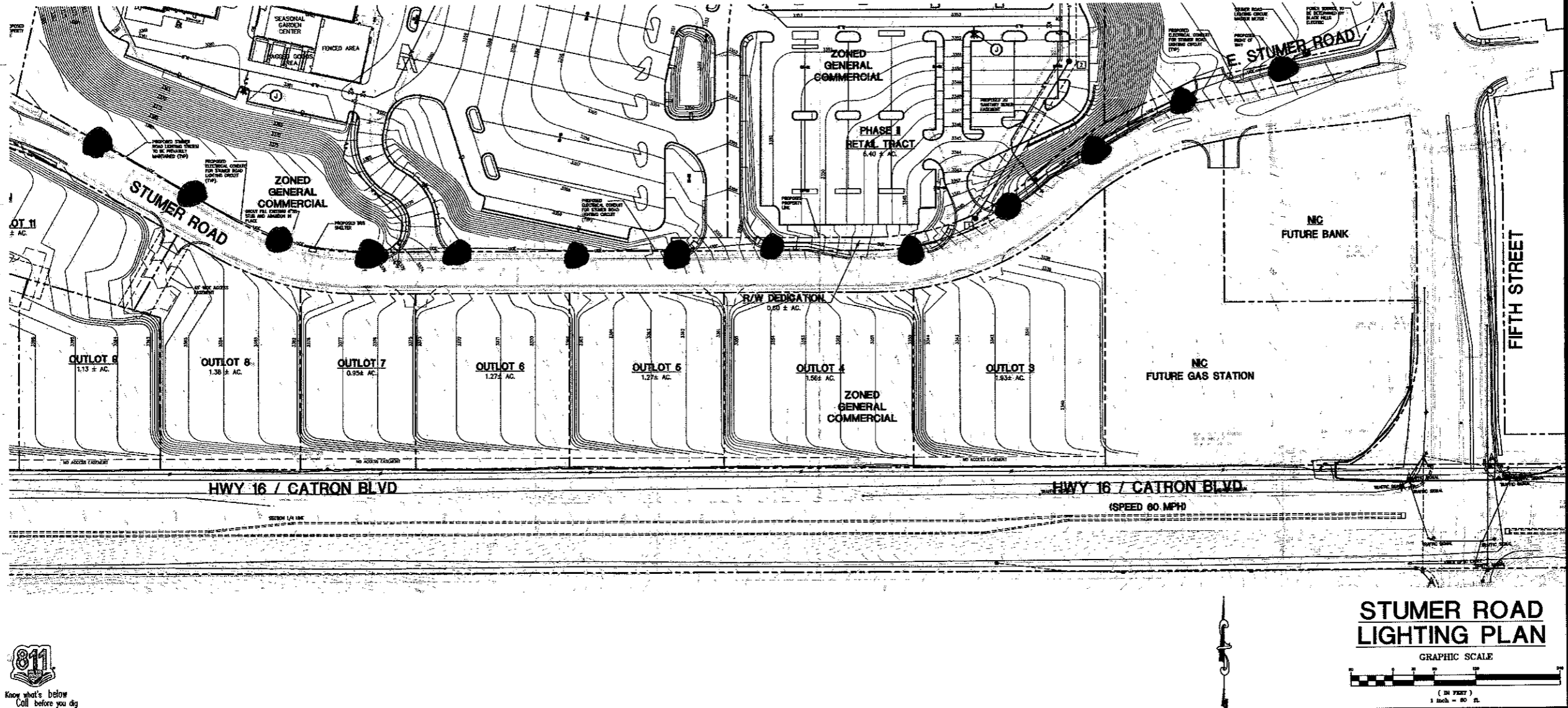
Wolvertson & Associates
Consulting Engineers & Land Surveyors
6763 West 44th Avenue, Suite 200, Frenchburg, MO 64540
Phone: (660) 441-4222 • Fax: (660) 441-4222
www.wolvertson-associates.com

Professional Seal of David A. Wolvertson, P.E., No. 20897, State of Missouri.

PROPOSED BLACK HILLS CENTER
Walmart # 3872-03
RAPID CITY, PENNINGTON COUNTY, S.D.
BY: THF, STONERIDGE DEVELOPMENT, LLC
ST. LOUIS, MO

REVISIONS	BY

DRAWN BY: DMN
CHECKED BY: K/JW
DATE: 08/18/2010
SCALE: 1" = 60'
JOB NO.: 08-140
SHEET NUMBER: SR-L
OF SHEETS: 08-140 1/2/2010



811 Know what's below Call before you dig