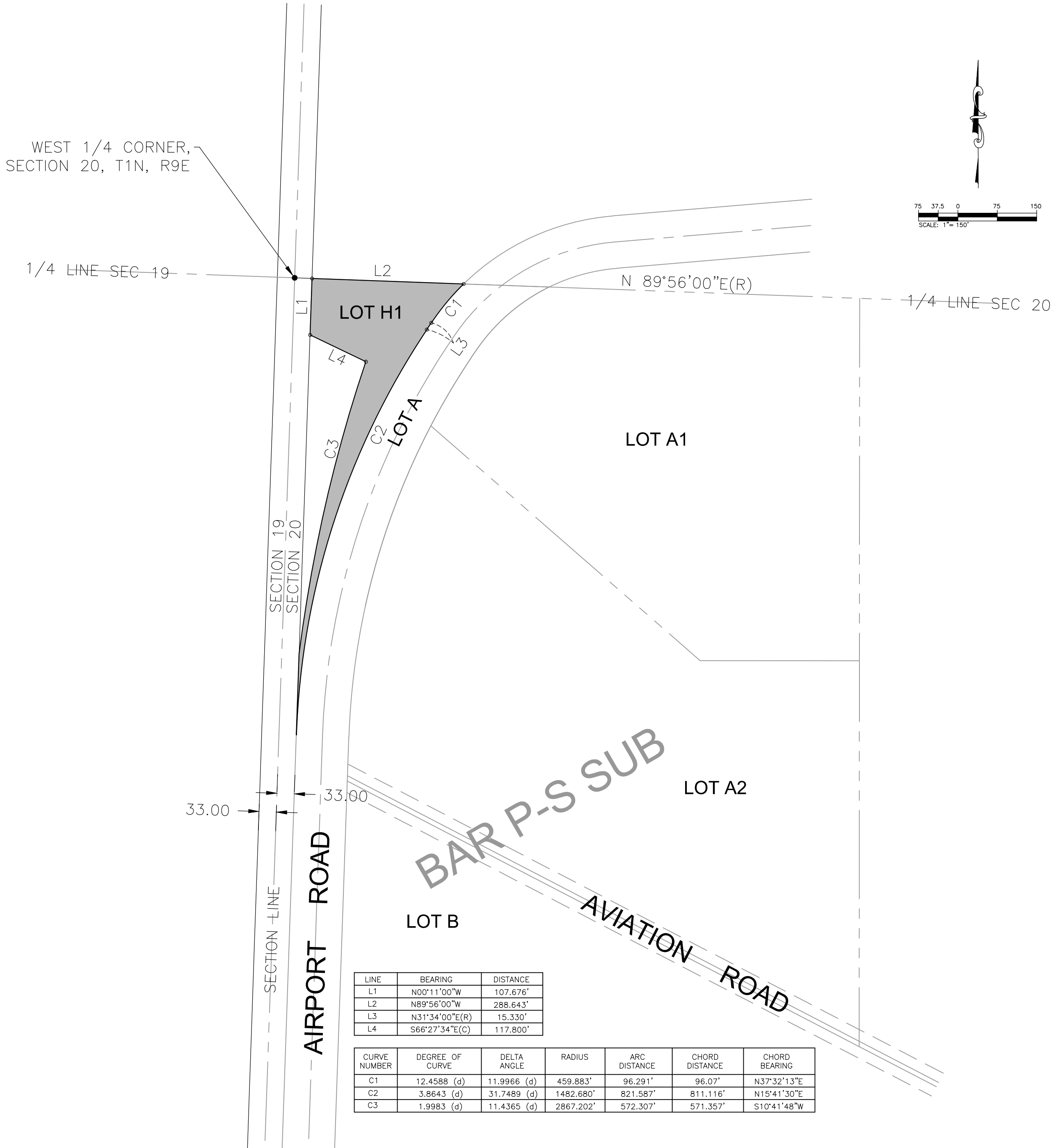


# PLAT of LOT H1

SHOWING A TRACT OF LAND FOR HIGHWAY PURPOSES IN THE  
 NW1/4 OF THE SW1/4 SECTION 20, T1N, R9E, B.H.M.  
 RAPID CITY, PENNINGTON COUNTY, SOUTH DAKOTA



LINE	BEARING	DISTANCE
L1	N00°11'00"W	107.676'
L2	N89°56'00"W	288.643'
L3	N31°34'00"E(R)	15.330'
L4	S66°27'34"E(C)	117.800'

CURVE NUMBER	DEGREE OF CURVE	DELTA ANGLE	RADIUS	ARC DISTANCE	CHORD DISTANCE	CHORD BEARING
C1	12.4588 (d)	11.9966 (d)	459.883'	96.291'	96.07'	N37°32'13"E
C2	3.8643 (d)	31.7489 (d)	1482.680'	821.587'	811.116'	N15°41'30"E
C3	1.9983 (d)	11.4365 (d)	2867.202'	572.307'	571.357'	S10°41'48"W

PREPARED BY:

CITY OF RAPID CITY PUBLIC WORKS DEPARTMENT  
 ENGINEERING SERVICES DIVISION

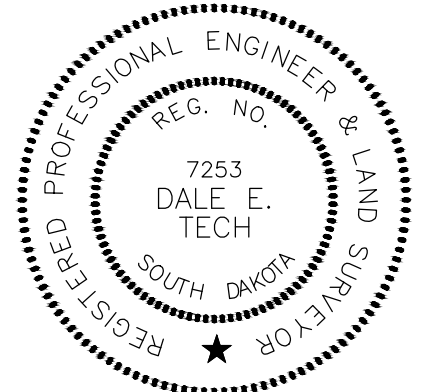
DRAWN BY M. PAULSON DATE 8/26/2010  
 CHECKED BY D. TECH DATE 8/26/2010

### SURVEYOR'S CERTIFICATE

I, DALE E. TECH, REGISTERED LAND SURVEYOR, NO. 7253 IN AND FOR THE CITY OF RAPID CITY, STATE OF SOUTH DAKOTA, DO HEREBY CERTIFY THAT AS ORDERED BY THE CITY OF RAPID CITY THE TRACT OF LAND AS SHOWN ON THIS PLAT HAS BEEN SURVEYED AT MY DIRECTION AND UNDER MY CONTROL, AND SUCH TRACT OF LAND SHALL BE HEREAFTER KNOWN BY THE LOT NUMBER AS DESIGNATED HEREIN. THE LOCATION AND DIMENSIONS OF THE TRACT ARE SHOWN ON THIS PLAT.

IN WITNESS WHEREOF, I HAVE SET MY HAND AND SEAL THIS \_\_\_\_\_ DAY OF \_\_\_\_\_ A.D., 20\_\_\_\_

DALE E. TECH  
 REGISTERED LAND SURVEYOR  
 LS NO. 7253



### OFFICE OF REGISTER OF DEEDS

STATE OF SOUTH DAKOTA  
 COUNTY OF PENNINGTON: SS # \_\_\_\_\_

FILED FOR RECORD THE \_\_\_\_\_ DAY OF \_\_\_\_\_ A.D., 20\_\_\_\_, AT \_\_\_\_\_ M., AND RECORDED IN THE BOOKS OF PLATS \_\_\_\_\_ ON PAGE \_\_\_\_\_ THEREIN.

\_\_\_\_\_  
 REGISTER OF DEEDS BY \_\_\_\_\_  
 DEPUTY