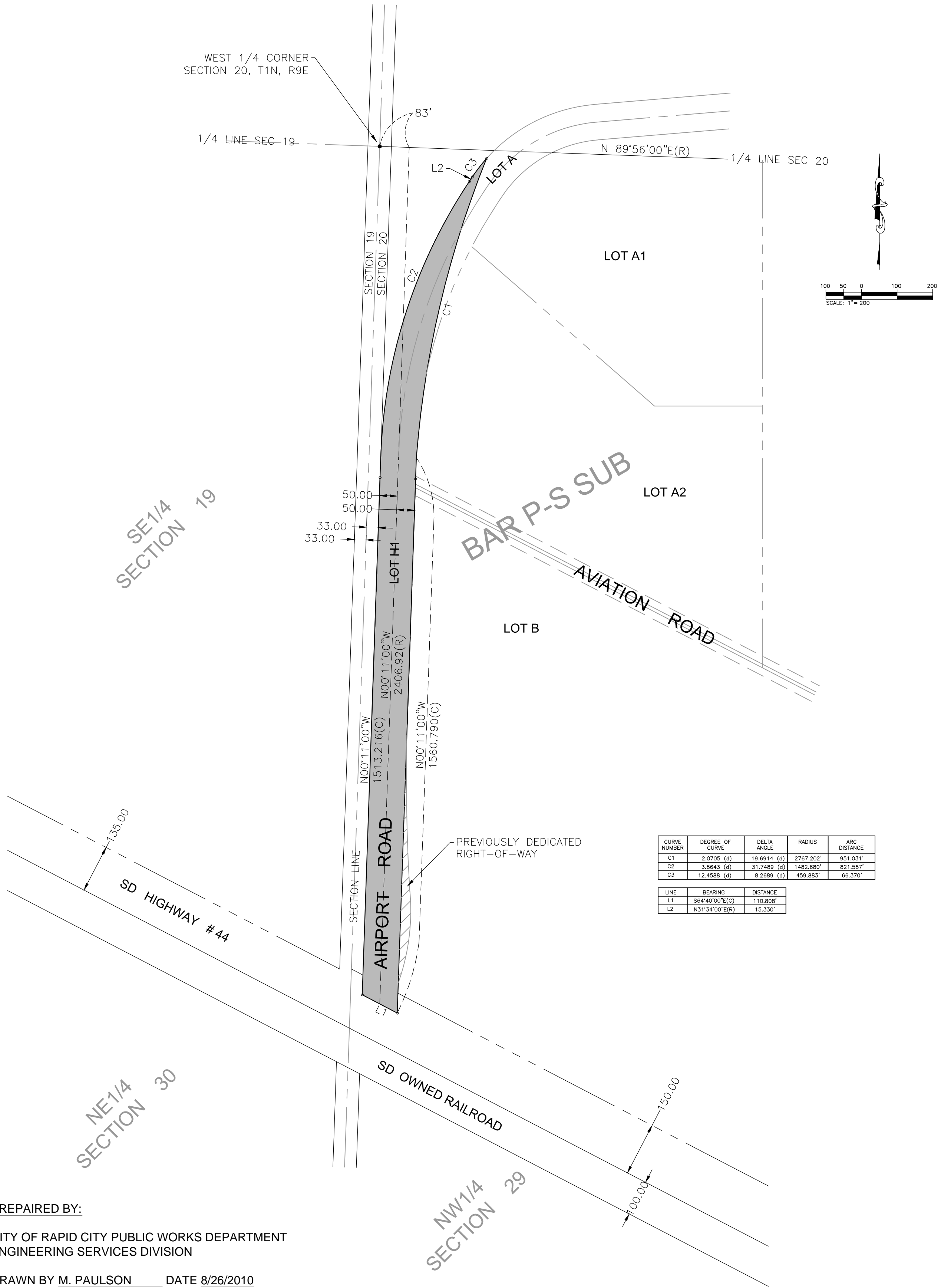


# PLAT of LOT H1 of LOT A

SHOWING A TRACT OF LAND FOR HIGHWAY PURPOSES IN LOT A OF THE  
SW1/4 OF SECTION 20, T1N, R9E, B.H.M.  
RAPID CITY, PENNINGTON COUNTY, SOUTH DAKOTA



CURVE NUMBER	DEGREE OF CURVE	DELTA ANGLE	RADIUS	ARC DISTANCE
C1	2.0705 (g)	19.6914 (g)	2767.202'	951.031'
C2	3.8643 (g)	31.7489 (g)	1482.880'	821.587'
C3	12.4588 (g)	8.2689 (g)	459.883'	66.370'

LINE	BEARING	DISTANCE
L1	S64°40'00"E(C)	110.808'
L2	N51°34'00"E(R)	15.330'

PREPARED BY:

CITY OF RAPID CITY PUBLIC WORKS DEPARTMENT  
ENGINEERING SERVICES DIVISION

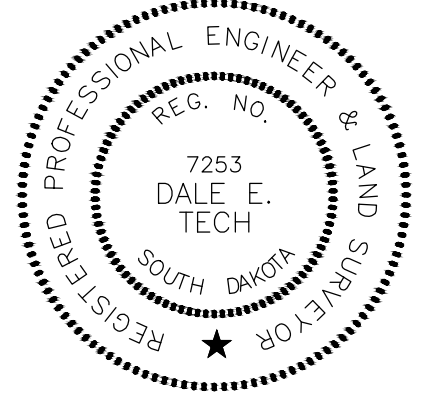
DRAWN BY M. PAULSON DATE 8/26/2010  
CHECKED BY D. TECH DATE 8/26/2010

### SURVEYOR'S CERTIFICATE

I, DALE E. TECH, REGISTERED LAND SURVEYOR, NO. 7253 IN AND FOR THE CITY OF RAPID CITY, STATE OF SOUTH DAKOTA, DO HEREBY CERTIFY THAT AS ORDERED BY THE CITY OF RAPID CITY THE TRACT OF LAND AS SHOWN ON THIS PLAT HAS BEEN SURVEYED AT MY DIRECTION AND UNDER MY CONTROL, AND SUCH TRACT OF LAND SHALL BE HEREAFTER KNOWN BY THE LOT NUMBER AS DESIGNATED HEREIN. THE LOCATION AND DIMENSIONS OF THE TRACT ARE SHOWN ON THIS PLAT.

IN WITNESS WHEREOF, I HAVE SET MY HAND AND SEAL THIS \_\_\_\_\_ DAY OF \_\_\_\_\_ A.D., 20\_\_\_\_

DALE E. TECH  
REGISTERED LAND SURVEYOR  
LS NO. 7253



### OFFICE OF REGISTER OF DEEDS

STATE OF SOUTH DAKOTA  
COUNTY OF PENNINGTON: SS # \_\_\_\_\_

FILED FOR RECORD THE \_\_\_\_\_ DAY OF \_\_\_\_\_ A.D., 20\_\_\_\_, AT \_\_\_\_\_ M., AND RECORDED IN THE BOOKS OF PLATS \_\_\_\_\_ ON PAGE \_\_\_\_\_ THEREIN.

\_\_\_\_\_  
REGISTER OF DEEDS BY \_\_\_\_\_  
DEPUTY