

Plans are reviewed for general conformance with applicable governmental regulations, standards, design criteria and engineering standards. The City of Rapid City does not certify the suitability, adequacy or completeness of the plans or design, which are the responsibility of the engineer of record. All necessary permits shall be obtained prior to construction of the proposed public improvements.

Engineering Reviewer \_\_\_\_\_ Date \_\_\_\_\_  
COMMENTS \_\_\_\_\_

RECEIVED  
JUL 07 2010

DREAM DESIGN INTERNATIONAL, INC.  
CIVIL ENGINEERING • LANDSCAPE ARCHITECTURE  
LAND DEVELOPMENT • CONSTRUCTION ADMINISTRATION

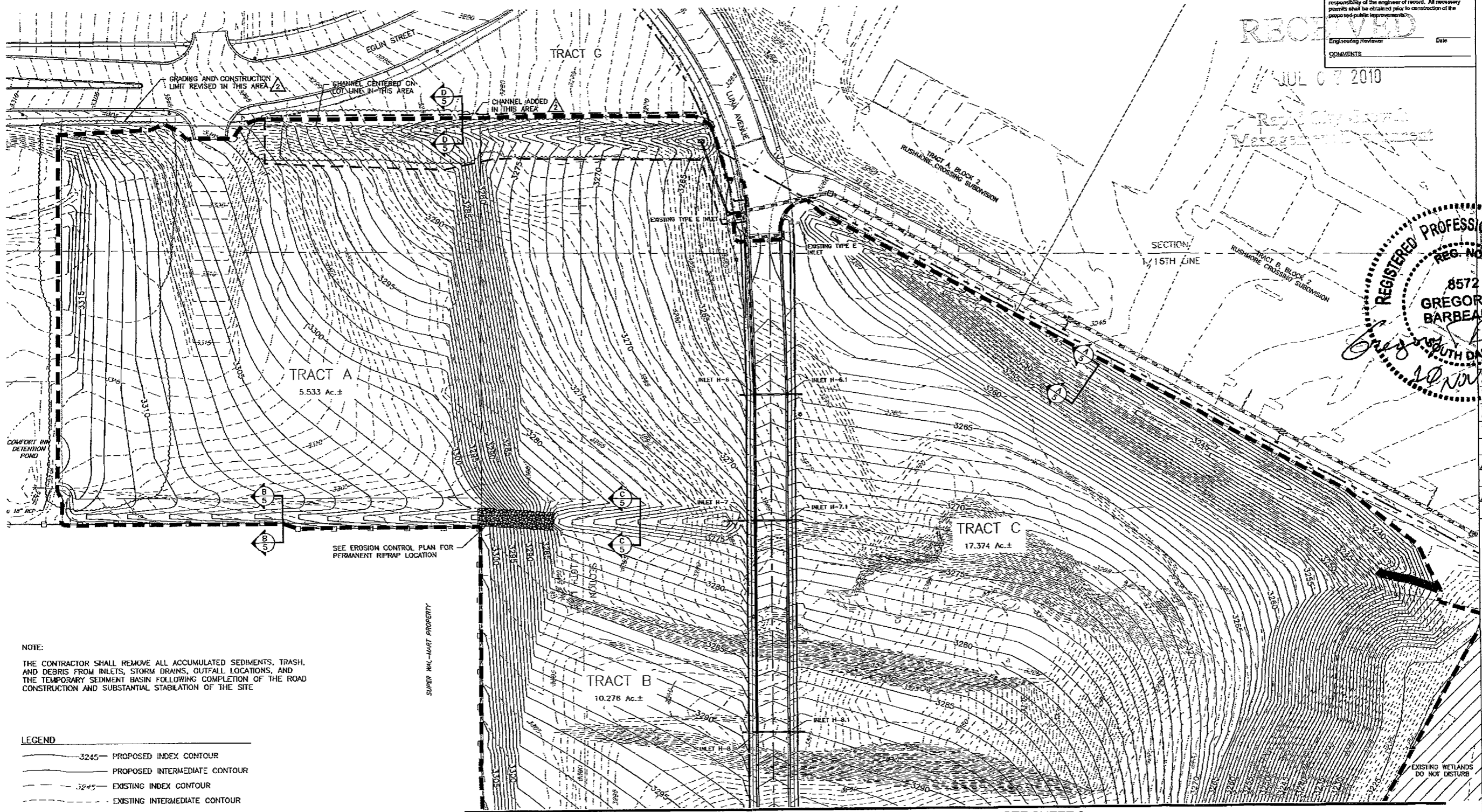
REGISTERED PROFESSIONAL ENGINEER  
REG. NO. 8572  
GREGORY T. BARBEAULD  
SOUTH DAKOTA

Drawn By: PW/JJS  
Print Date: 07-08  
Internal Job No: 07-0485  
Surveyed By: RENNER  
Survey Date: 12/2007

Revisions:  
1-15-09 REVISED EXISTING AND PROPOSED CONDITIONS  
11-5-09 REVISED GRADING TRACT A

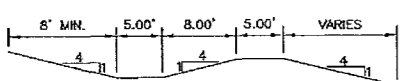
RUSHMORE CENTER  
LUNA AVENUE

Sheet Title:  
SITE GRADING  
PLAN  
NORTH  
Sheet:  
5 of 29

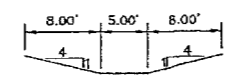


NOTE:  
THE CONTRACTOR SHALL REMOVE ALL ACCUMULATED SEDIMENTS, TRASH, AND DEBRIS FROM INLETS, STORM DRAINS, GUTFALL LOCATIONS, AND THE TEMPORARY SEDIMENT BASIN FOLLOWING COMPLETION OF THE ROAD CONSTRUCTION AND SUBSTANTIAL STABILIZATION OF THE SITE.

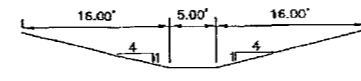
- LEGEND
- 3245 — PROPOSED INDEX CONTOUR
  - PROPOSED INTERMEDIATE CONTOUR
  - 3245 — EXISTING INDEX CONTOUR
  - EXISTING INTERMEDIATE CONTOUR
  - GRADING LIMITS
  - CONTOUR INTERVAL = 1'



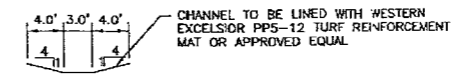
(A) TEMPORARY DRAINAGE INTERCEPT CHANNEL  
SCALE: 1"=10'



(B) TEMPORARY DRAINAGE CHANNEL  
SCALE: 1"=10'

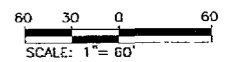


(C) TEMPORARY DRAINAGE CHANNEL  
SCALE: 1"=10'



(D) DRAINAGE CHANNEL  
SCALE: 1"=10'

CHANNEL TO BE LINED WITH WESTERN EXCELSIOR PPS-12 TURF REINFORCEMENT MAT OR APPROVED EQUAL.



MATCH LINE - SEE SHEET 6

X:\160-489\485D\rawing\sheet\revisions\05-06 GRADING.dwg, 6 GRADING-1, 1/17/2009 11:51:44 AM