

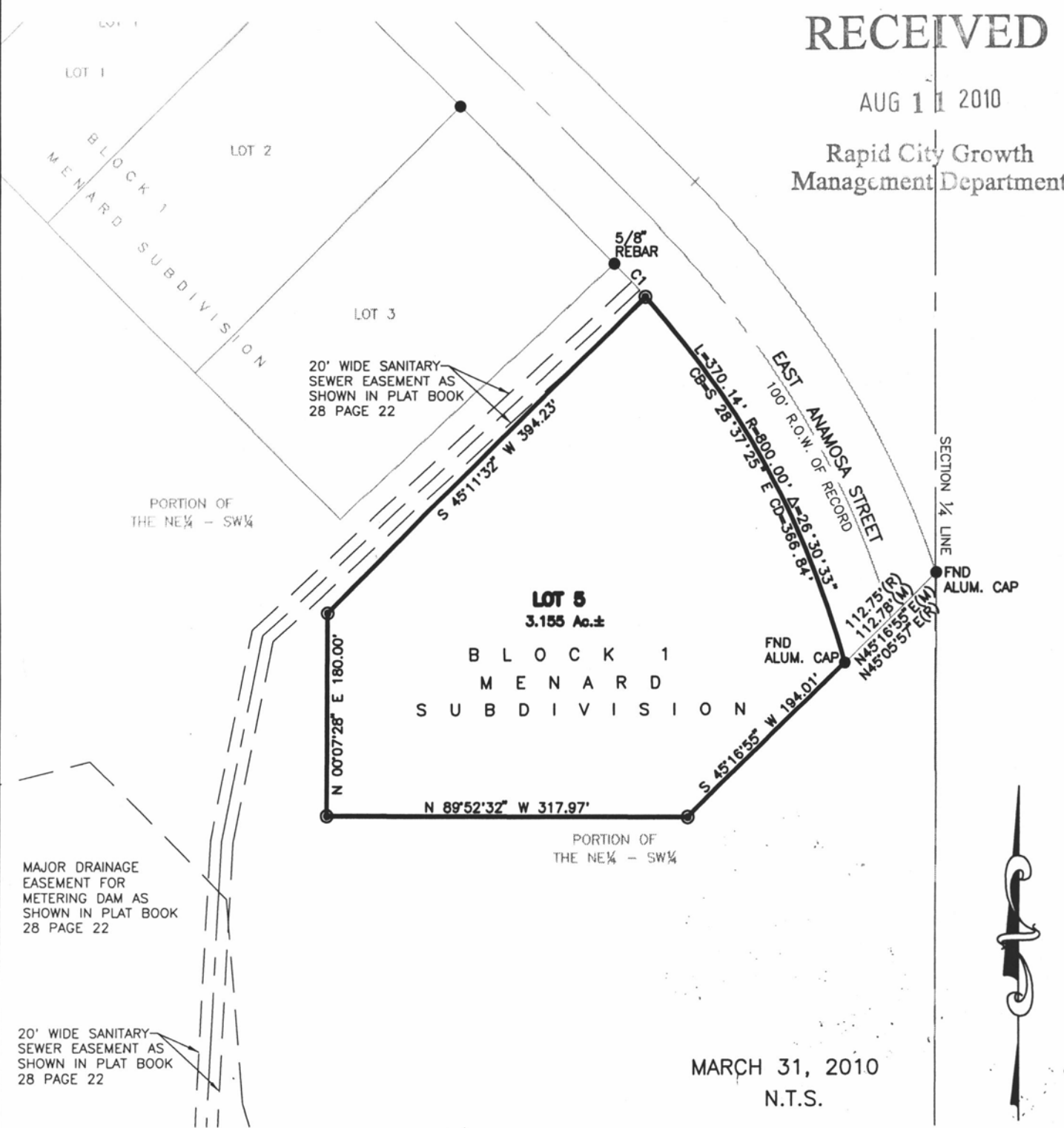
# LOT 5 OF BLOCK 1, MENARD SUBDIVISION

(Formerly a portion of the NW<sup>1</sup>/<sub>4</sub> of the SW<sup>1</sup>/<sub>4</sub>)  
SECTION 32, T2N, R8E, B.H.M.,  
RAPID CITY, PENNINGTON COUNTY, SOUTH DAKOTA

## RECEIVED

AUG 11 2010

Rapid City Growth  
Management Department



MAJOR DRAINAGE  
EASEMENT FOR  
METERING DAM AS  
SHOWN IN PLAT BOOK  
28 PAGE 22

20' WIDE SANITARY  
SEWER EASEMENT AS  
SHOWN IN PLAT BOOK  
28 PAGE 22

20' WIDE SANITARY  
SEWER EASEMENT AS  
SHOWN IN PLAT BOOK  
28 PAGE 22

PORTION OF  
THE NE<sup>1</sup>/<sub>4</sub> - SW<sup>1</sup>/<sub>4</sub>

PORTION OF  
THE NE<sup>1</sup>/<sub>4</sub> - SW<sup>1</sup>/<sub>4</sub>

MARCH 31, 2010  
N.T.S.

