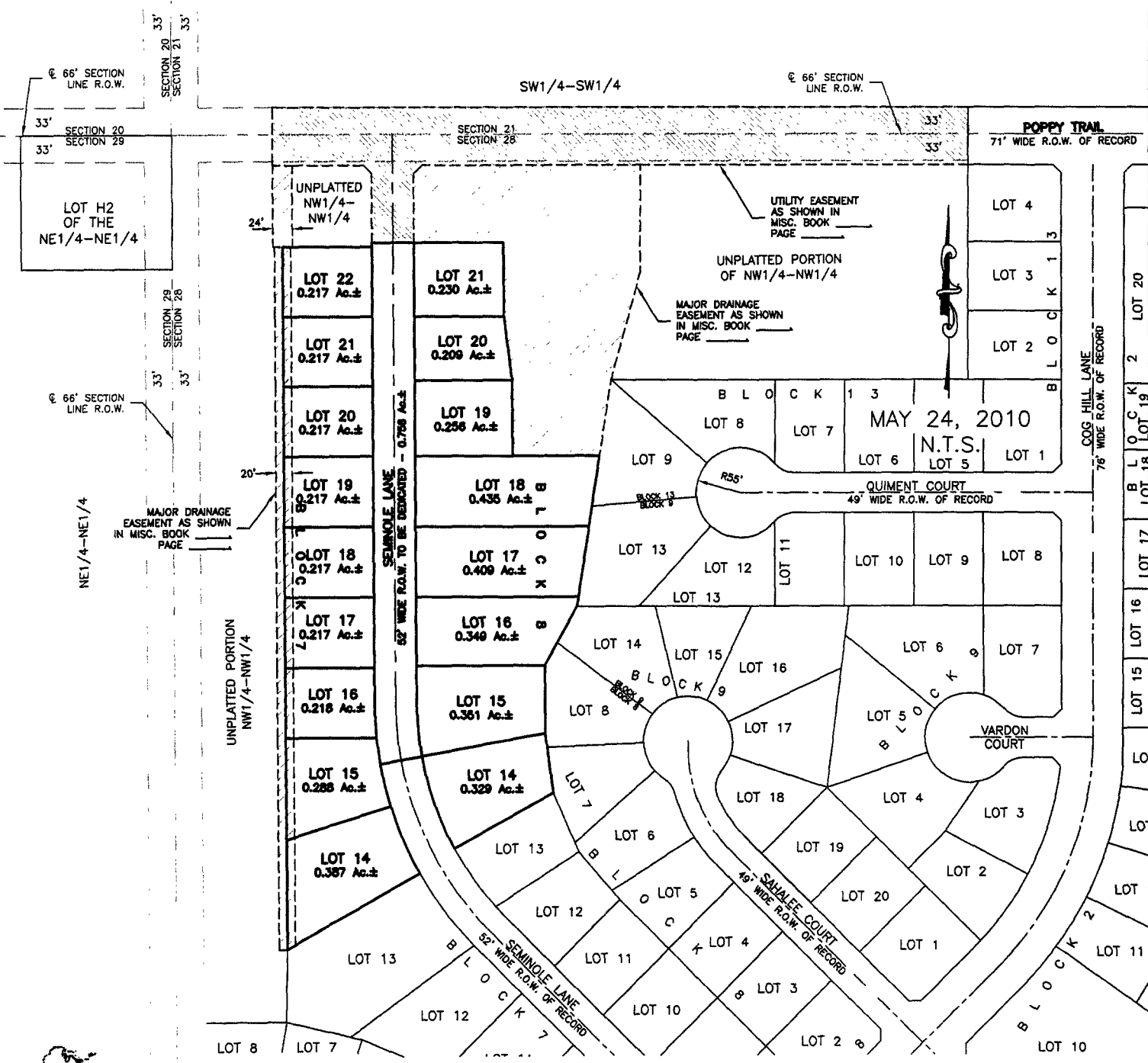


PLAT OF LOTS 14 THRU 22 OF BLOCK 7 AND LOTS 14 THRU 21 OF BLOCK 8, RED ROCK MEADOWS SUBDIVISION

(formerly a portion of NW1/4 of the NW1/4)
LOCATED IN NW1/4 OF THE NW1/4,
SECTION 28, T1N, R7E, BHM
RAPID CITY, PENNINGTON COUNTY, SOUTH DAKOTA



CITY HALL 1903

RENNER & ASSOCIATES, LLC.

616 SIXTH ST. * RAPID CITY, SD 57701
PHONE: 605/721-7310 * FAX: 605/721-7313
EMAIL: GARY@RENNERASSOC.COM