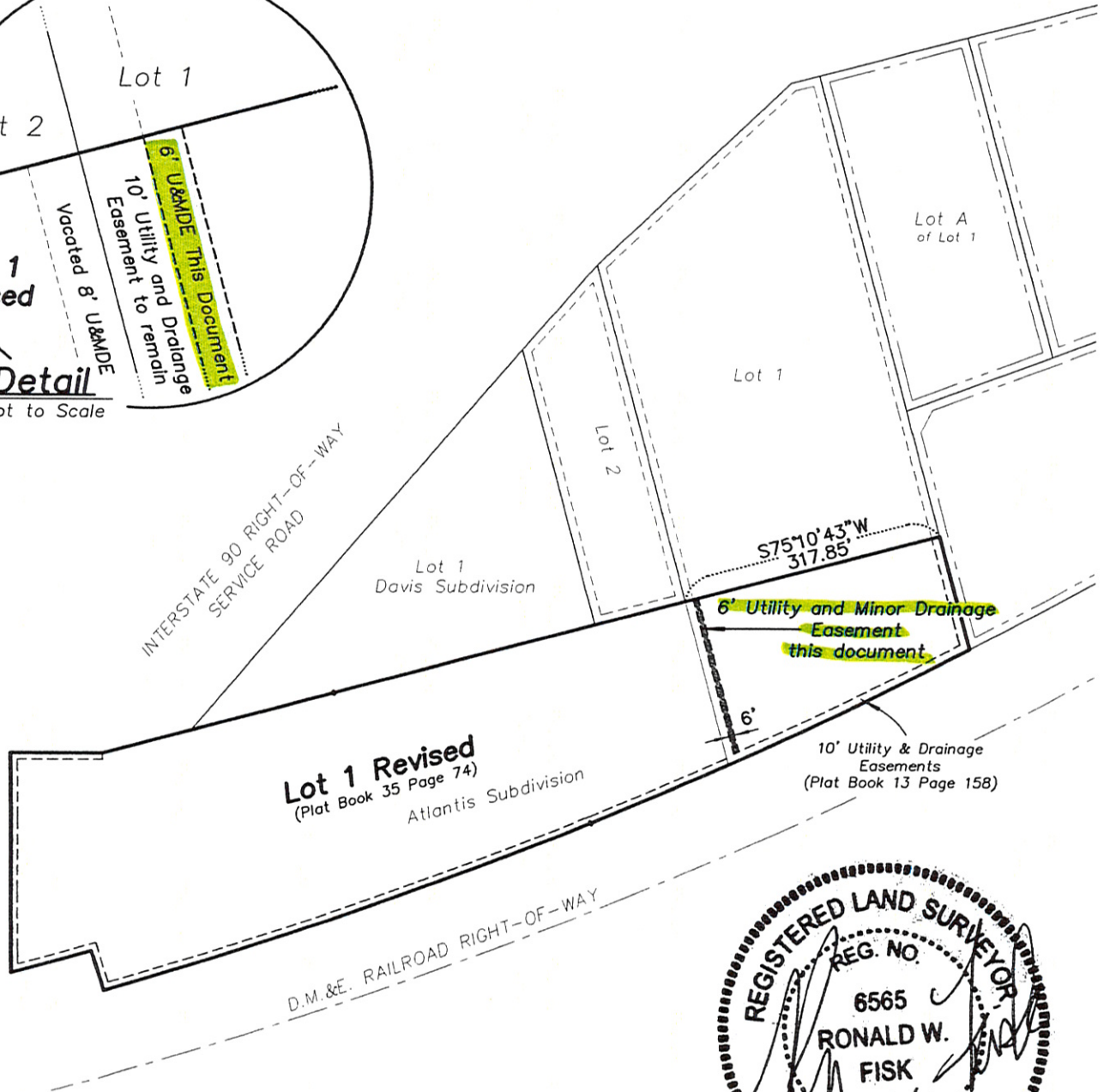
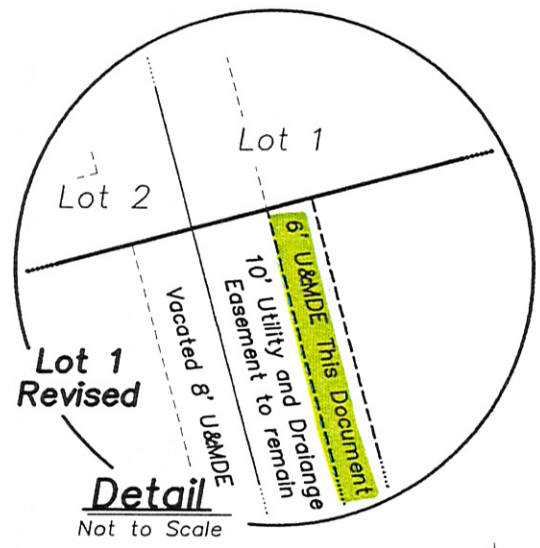
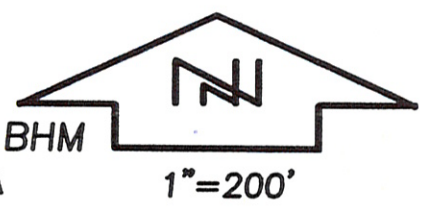


EXHIBIT A

EASEMENT

LOT 1 REVISED OF ATLANTIS SUBDIVISION
LOCATED IN W1/2 SW1/4 SECTION 27, T2N, R8E, BHM
RAPID CITY, PENNINGTON COUNTY, SOUTH DAKOTA



PREPARED BY:
FISK LAND SURVEYING & CONSULTING ENGINEERS, INC.
P.O. BOX 8154, RAPID CITY, SD 57709 (605) 348-1538 July 8, 2010