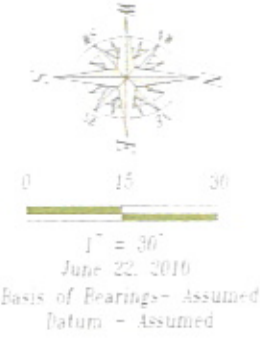
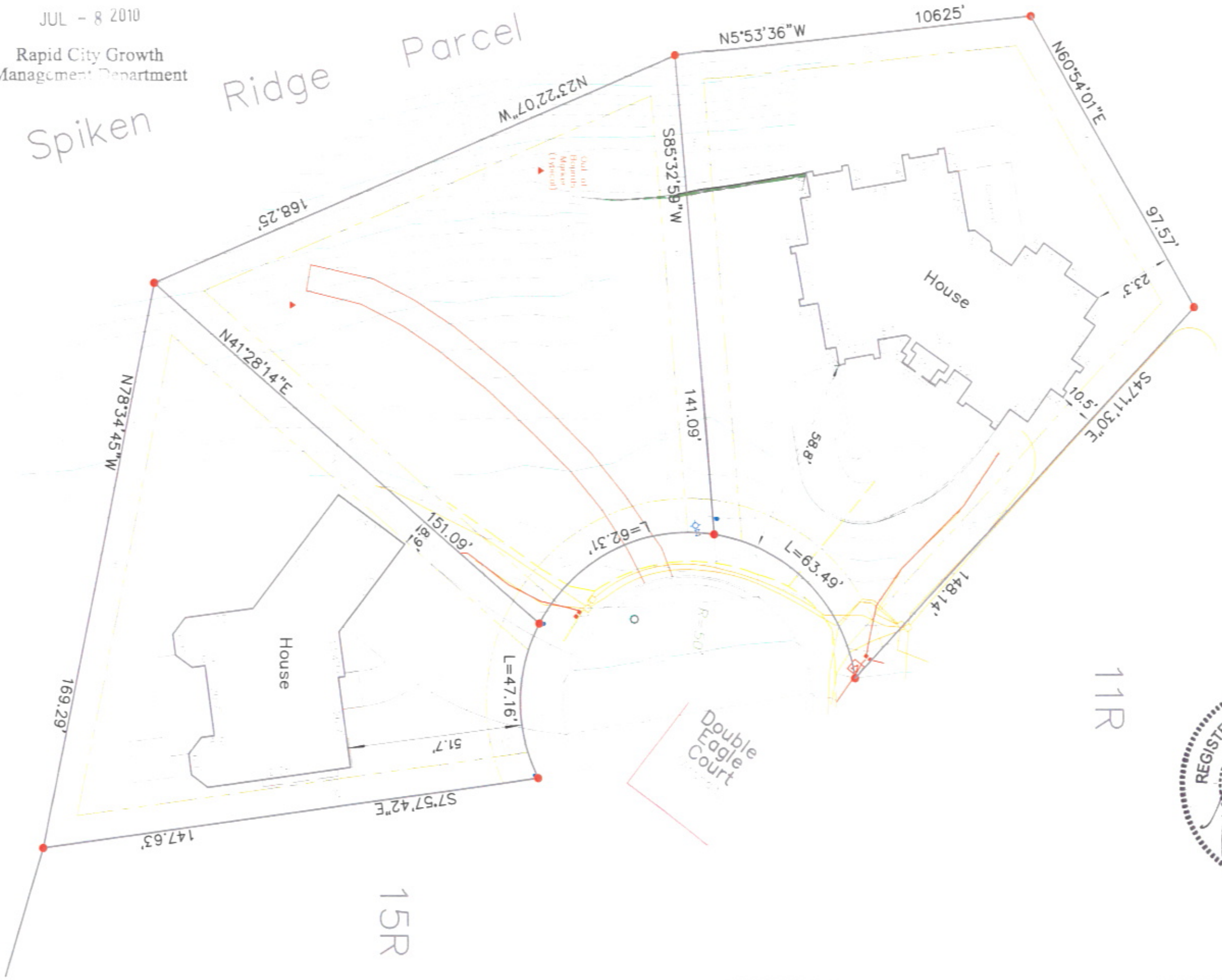


RECEIVED

JUL - 8 2010

Rapid City Growth Management Department

Spiken Ridge Parcel



10R

11R

15R

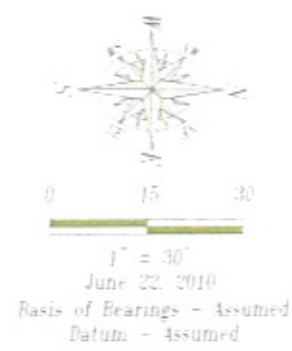
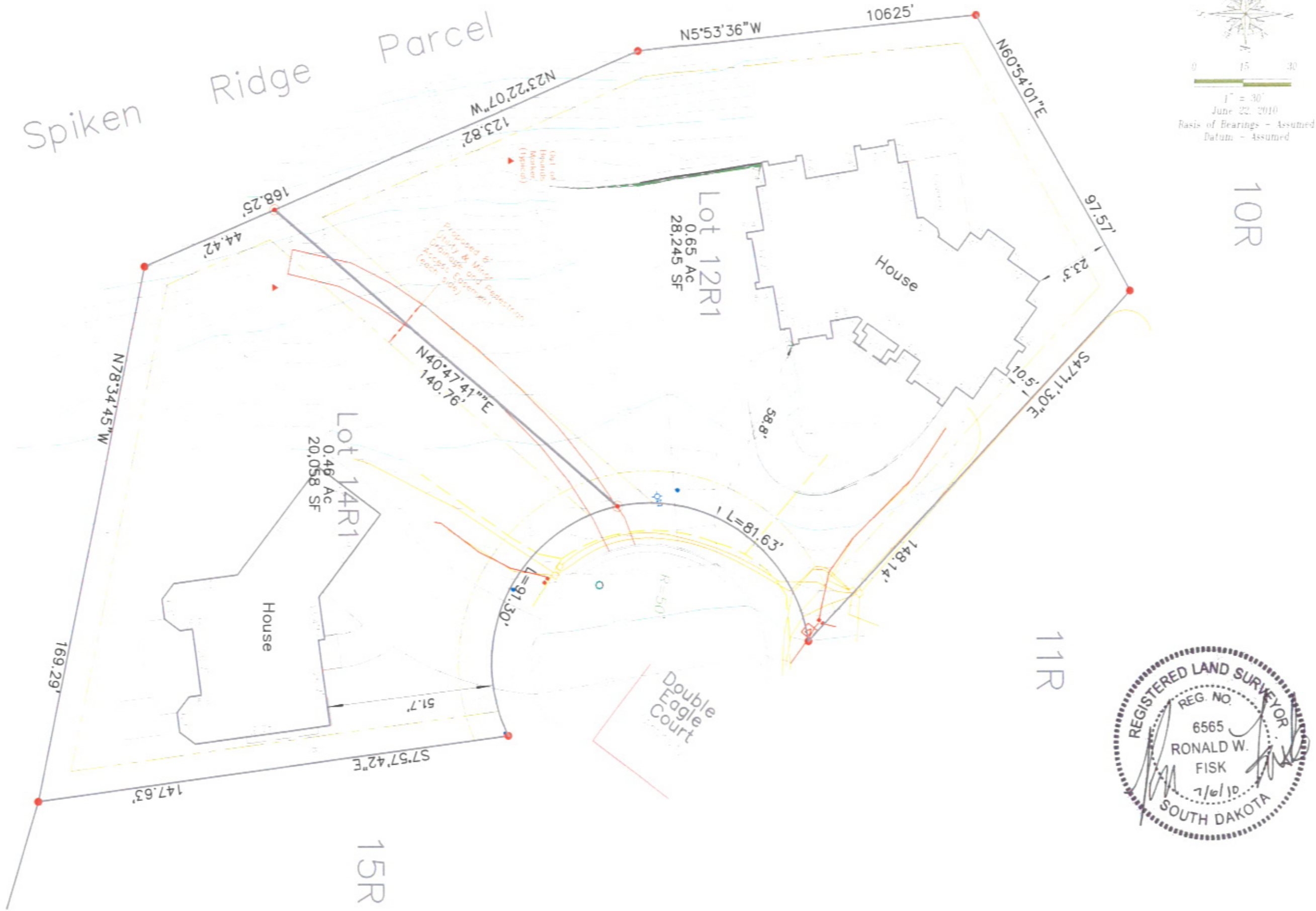


Fisk Land Surveying & Consulting, Inc.
 1022 Main Street P.O. Box 8104
 Rapid City, South Dakota 57709
 (605) 348-1530
 (605) 348-1112 (fx)

Site Plan-Replat
 Lots 12R-13R of Village
 on the Green No.2 2 Subdivision
 Pennington County, South Dakota

Scale	ML, BL
Date	6/14/10
Project	BL,RWF
Drawn by	JF
Checked by	
Existing Site	1 of 2
Project No.	10-06-01

Spiken Ridge Parcel



Fisk Land Surveying & Consulting Engineers, Inc.
 1027 Main Street, P.O. Box 8754
 Rapid City, South Dakota 57709
 (605) 348-1638
 (605) 348-1112 (fax)

Site Plan—Replat
 Lots 12R-13R of Village
 on the Green No.2 2 Subdivision
 Pennington County, South Dakota

ML, BL
6/14/10
BL,RWF
JF
Proposed Site
2 of 2
10-06-01

