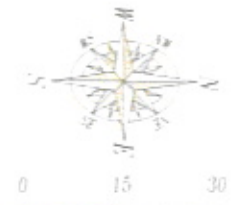
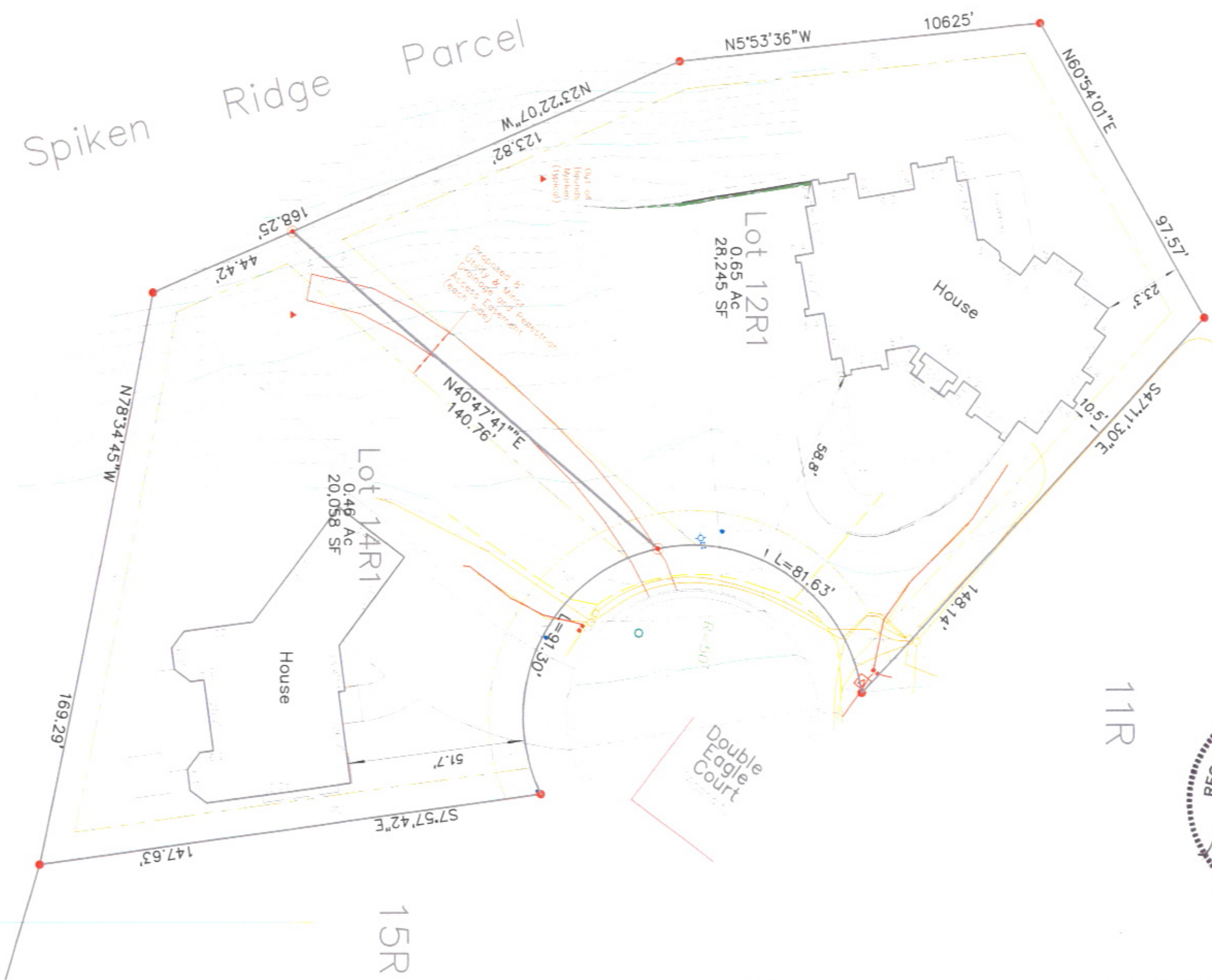


Spiken Ridge Parcel



10R

11R

15R

RECEIVED

JUL - 8 2010

Rapid City Growth
Management Department



Fisk Land Surveying
& Consulting
Engineers, Inc.

1022 Main Street (P.O. Box 8084)
Rapid City, South Dakota 57709
(605) 348-1538
(605) 348-1112 (fx)

Site Plan—Replat

Lots 12R—13R of Village
on the Green No.2 2 Subdivision
Pennington County, South Dakota

Project No.	ML, BL
Date	6/14/10
Scale	BL,RWF
Prepared by	JF
Reviewed by	
Proposed Site	2 of 2
Drawn by	10-06-01

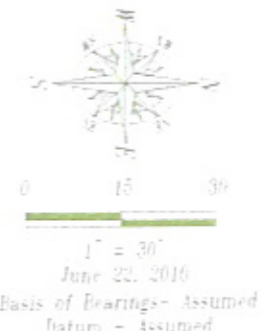
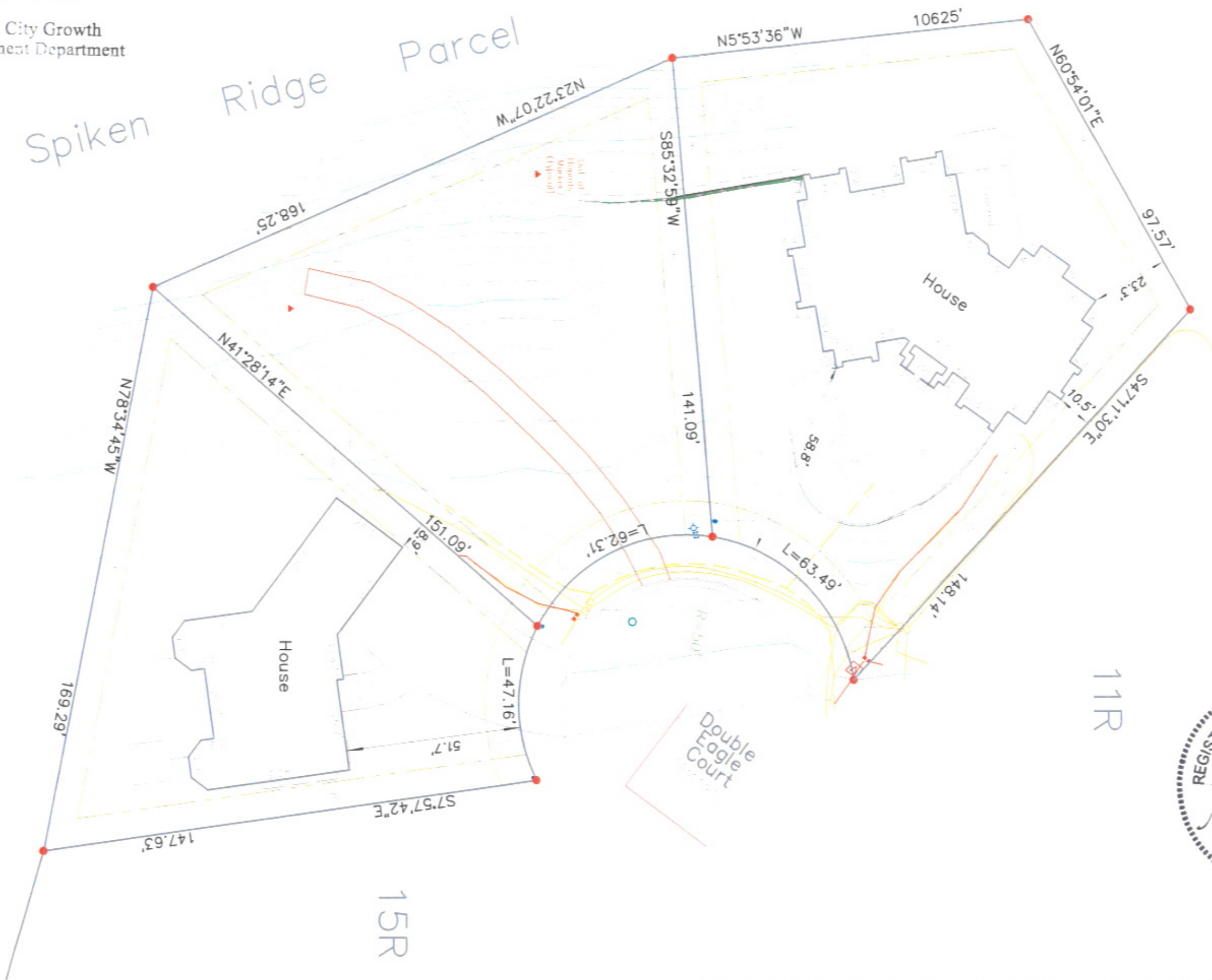
RECEIVED

10PL051

JUL - 8 2010

Rapid City Growth Management Department

Spiken Ridge Parcel



10R

11R

15R



Fisk Land Surveying & Consulting, Inc.
 1025 Main Street (P.O. Box 4154)
 Rapid City, South Dakota 57709
 (605) 348-1538
 (605) 341-1112 (fax)

Site Plan—Replat
 Lots 12R—13R of Village
 on the Green No.2 2 Subdivision
 Pennington County, South Dakota

ML, BL
6/14/10
BL,RWF
JF
Existing Site
1 of 2
10-06-01