

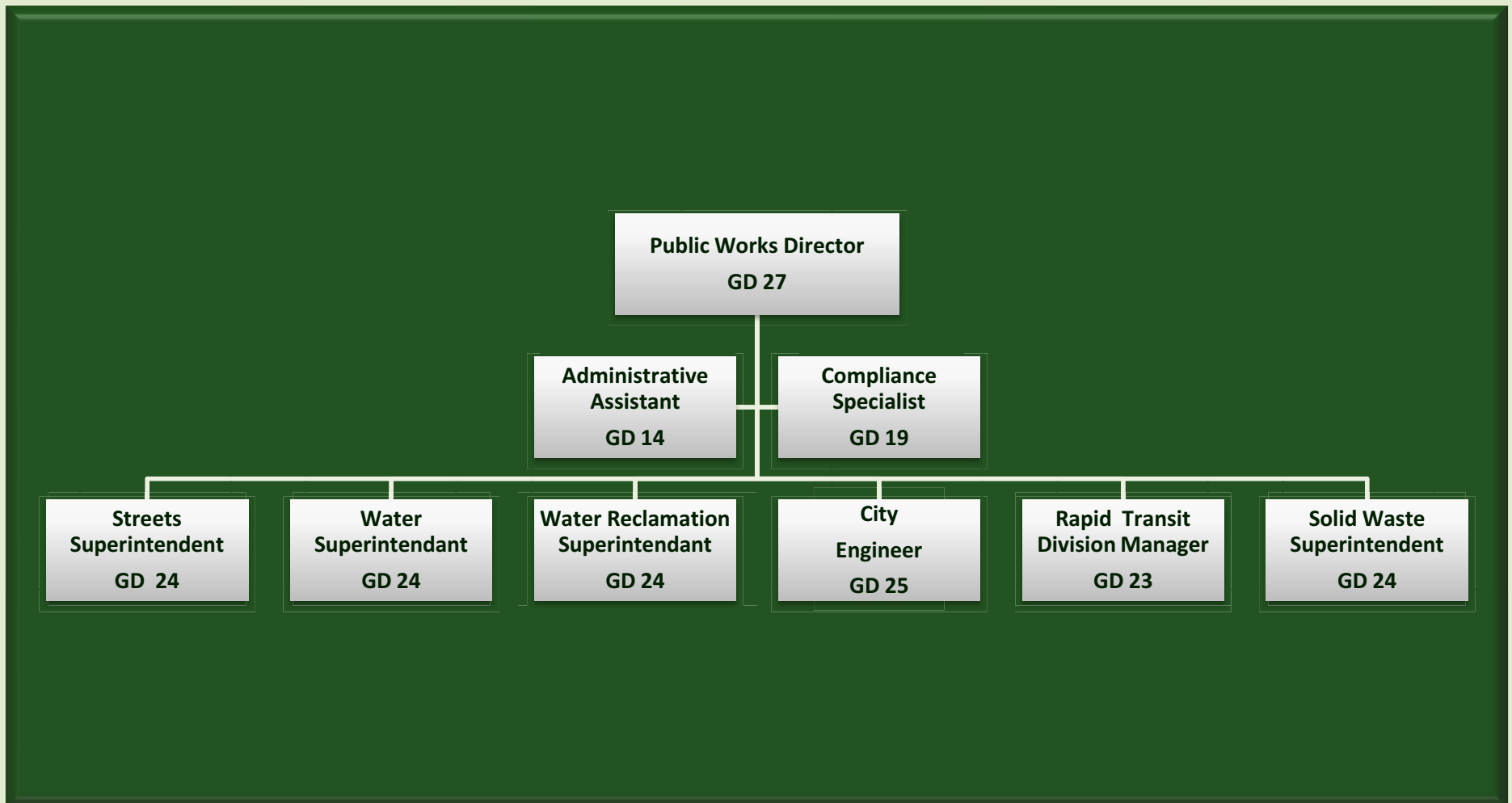
# 2<sup>nd</sup> Floor Reorganization

Presented  
July 27, 2010

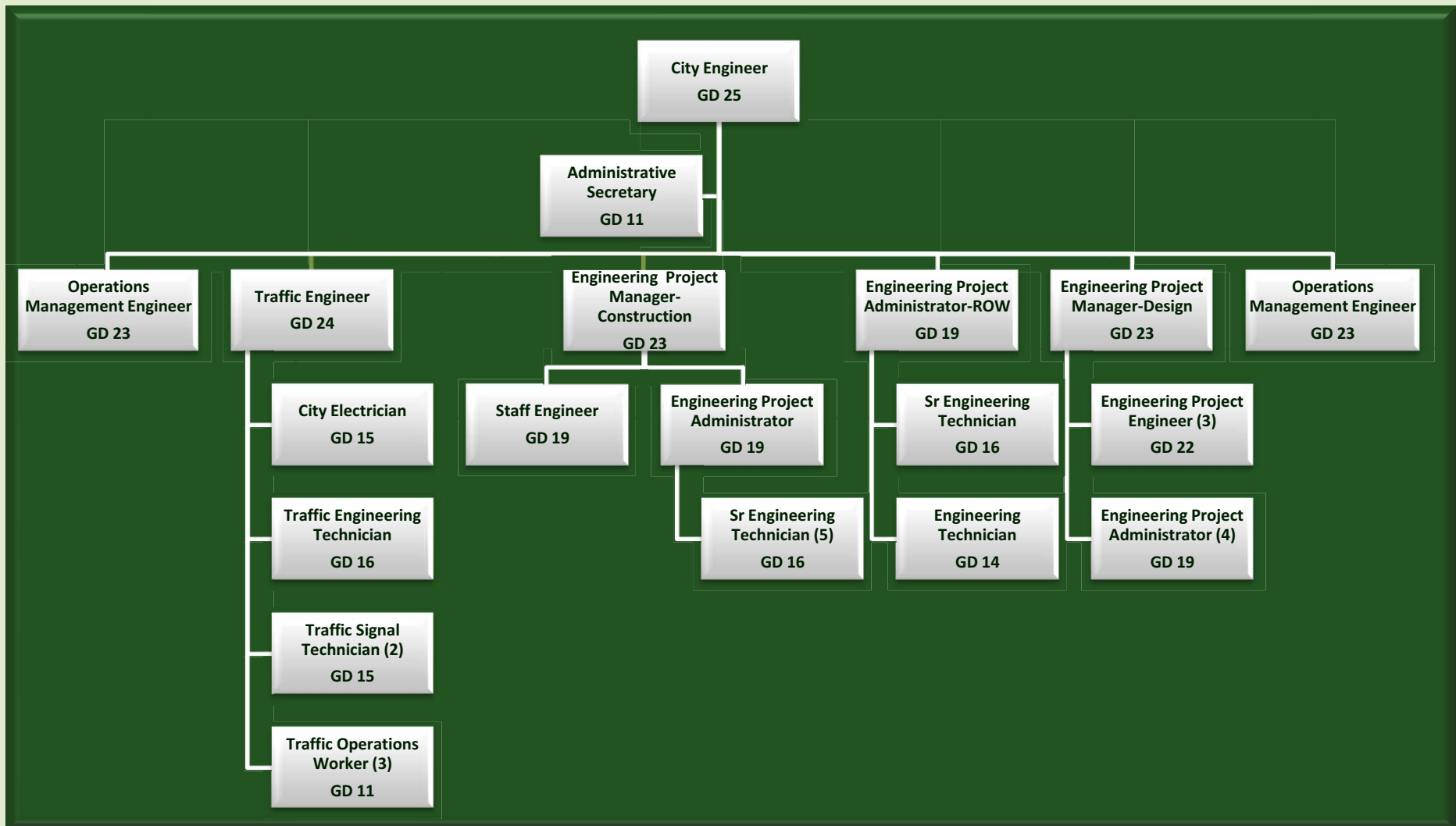
# Lehe Study Recommendation

- Merge all Growth Management engineering functions into Public Works
  - 4 Engineers
  - 3 Senior Engineering Technicians
  - 1 Engineering Technician
  - 1 Stormwater Specialist
  - 1 Administrative Secretary

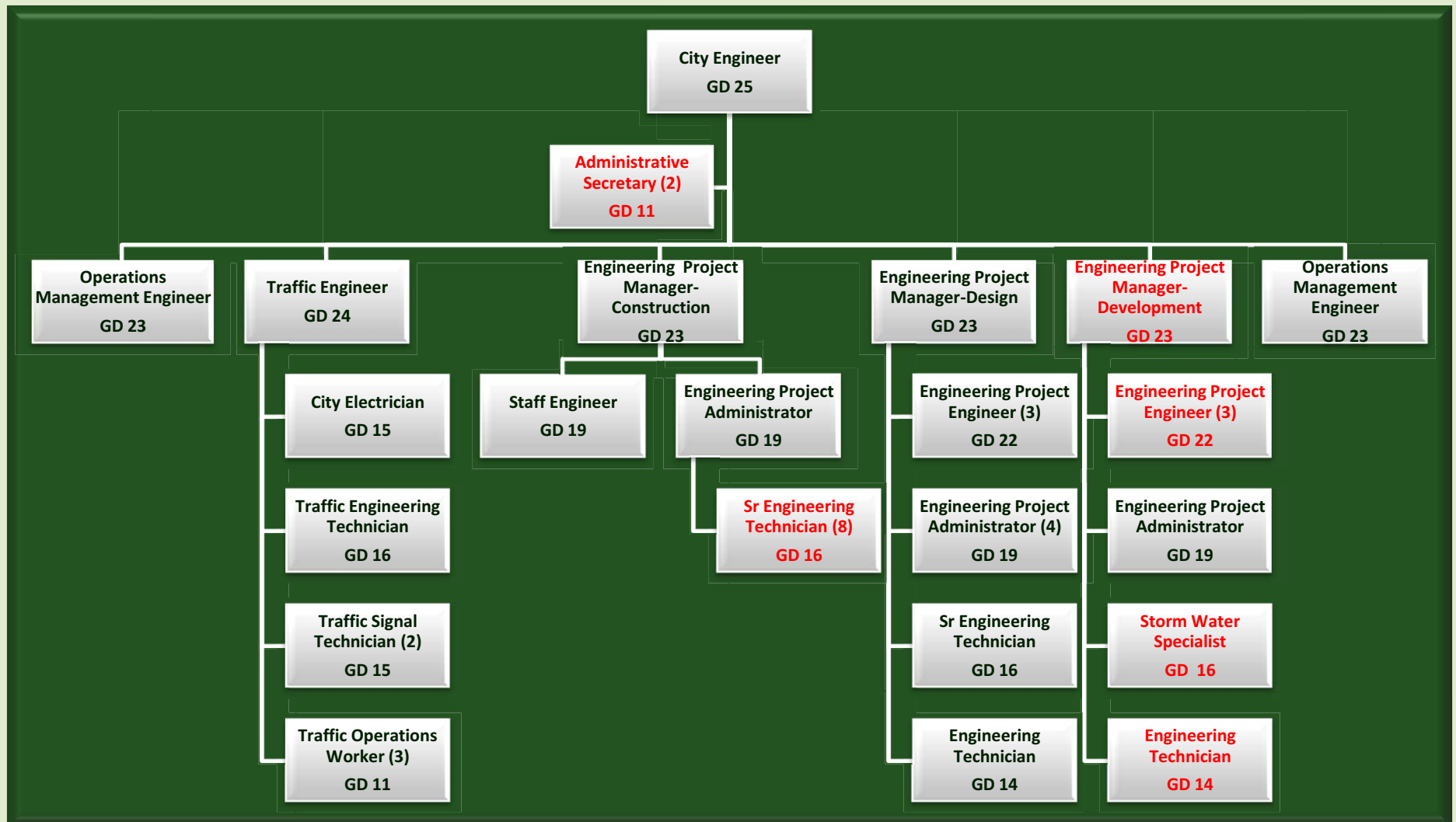
# Public Works Department



# Engineering Division (Existing)



# Engineering Division (Proposed)



# Important to Note

- Engineering Project Manager-Development
  - Committed to expedient review and decision making
  - Citizen & Development projects are Priority #1
- Senior Engineering Technicians
  - Inspect construction
  - More attention focused in this area (3 up to 8)
- Commitment to positive interdepartmental relationships

# Benefits

- Engineering functions under one roof
  - Consistency in design standards & construction practices
  - Right hand/left hand
  - Efficiency in personnel
  - Efficiency in customer's time
  - Eliminates “not my department”
  - Flexibility based on needs

# When

August 1, 2010



# Transition Effect on Customers

- Plans/applications continue to be accepted in Growth Management
- Behind the scene changes should have little effect on Citizens & Development Community
- Noticeable presence in the field during construction