

METES AND BOUNDS

A PORTION OF THE E1/2 OF THE NE1/4

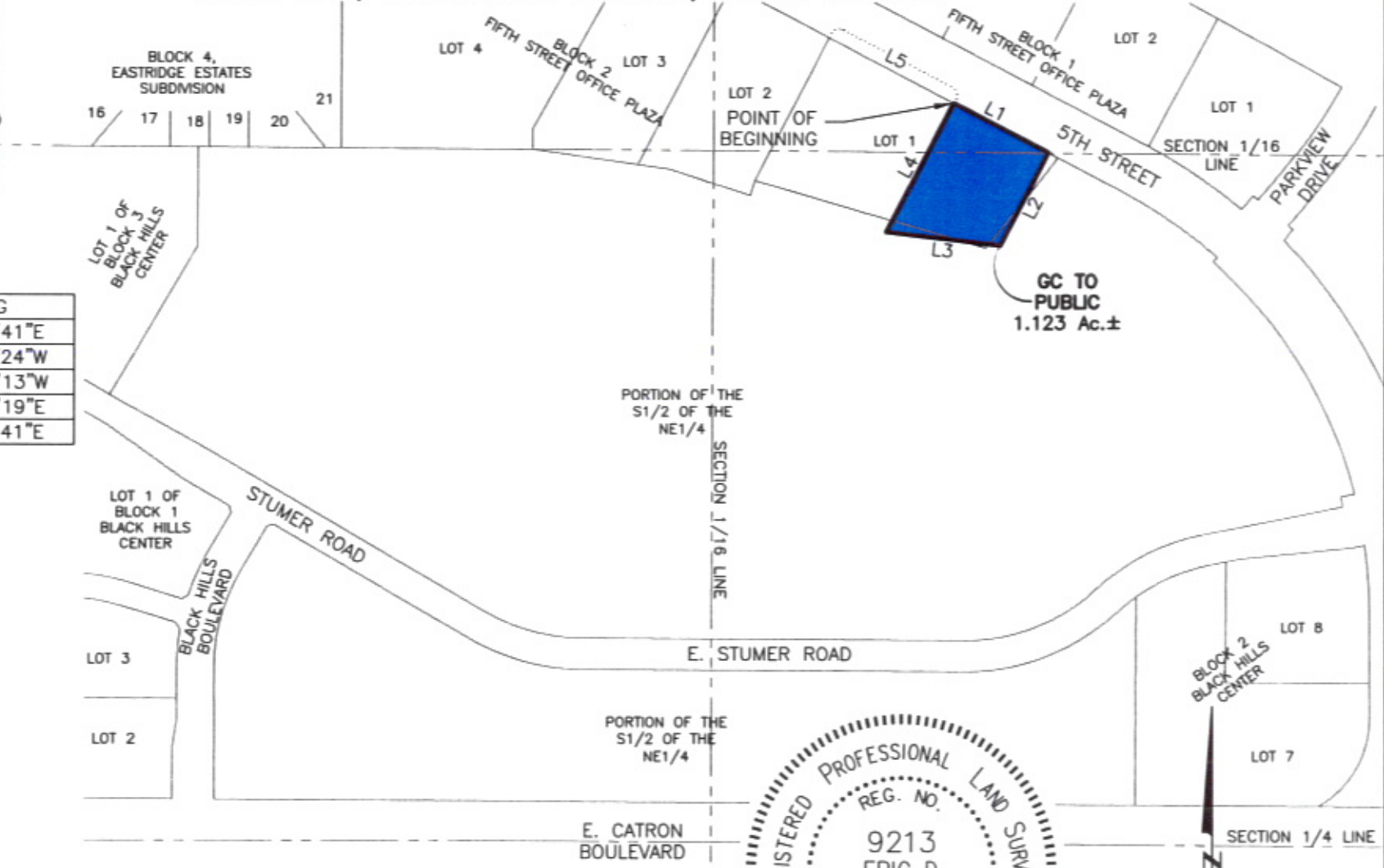
LOCATED IN SECTION 24, T1N, R7E, BHM
RAPID CITY, PENNINGTON COUNTY, SOUTH DAKOTA

RECEIVED

FEB 26 2010

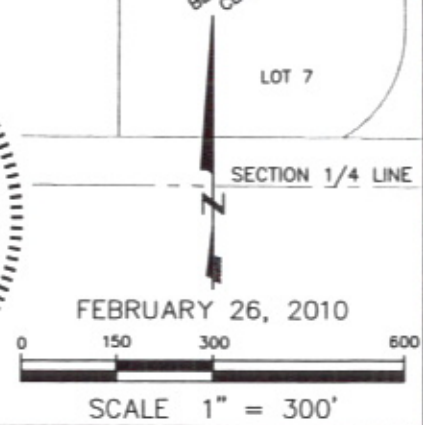
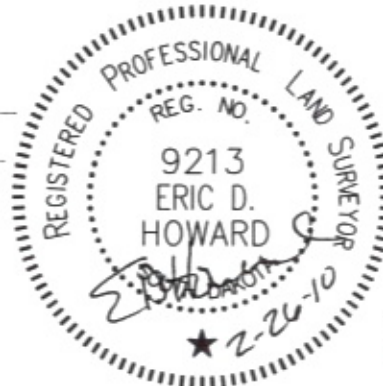
Rapid City Growth
Management Department

| LINE | LENGTH | BEARING |
|------|---------|-------------|
| L1 | 203.98' | S62°29'41"E |
| L2 | 200.74' | S27°26'24"W |
| L3 | 218.49' | N83°19'13"W |
| L4 | 278.42' | N27°30'19"E |
| L5 | 268.61' | S62°29'41"E |



RENNER & ASSOCIATES, LLC.

616 SIXTH ST. * RAPID CITY, SD 57701
PHONE: 605/721-7310 * FAX: 605/721-7313
EMAIL: GARY@RENNERASSOC.COM



FEBRUARY 26, 2010