

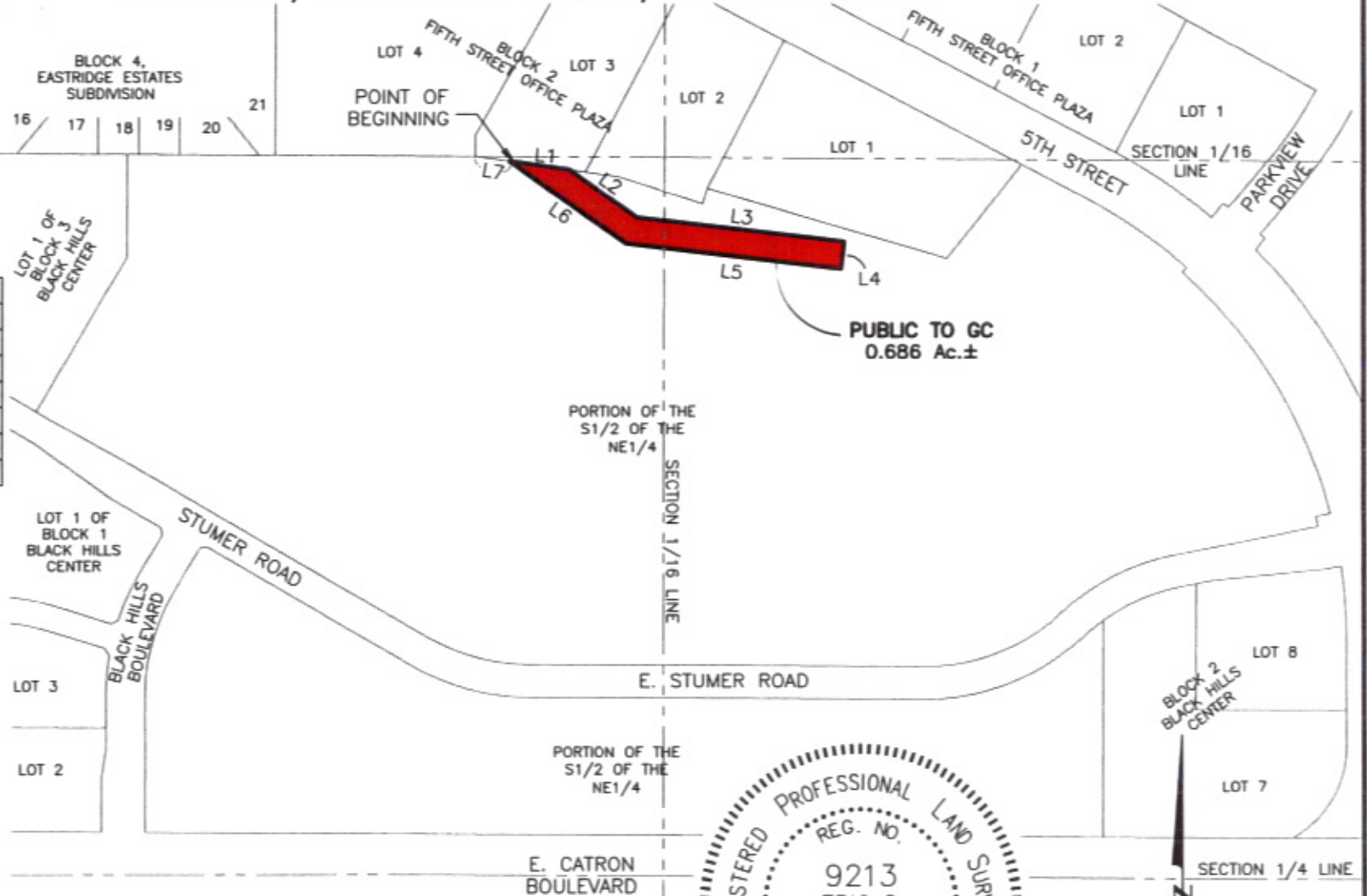
RECEIVED

FEB 26 2010

Rapid City Planning
Management

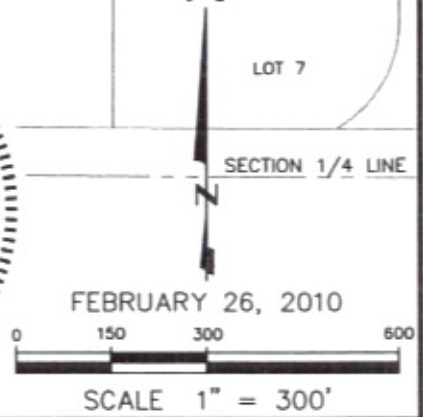
METES AND BOUNDS
A PORTION OF THE
S1/2 OF THE NE1/4
LOCATED IN SECTION 24, T1N, R7E, BHM
RAPID CITY, PENNINGTON COUNTY, SOUTH DAKOTA

| LINE | LENGTH | BEARING |
|------|---------|-------------|
| L1 | 109.48' | S81°56'11"E |
| L2 | 151.94' | S54°45'40"E |
| L3 | 383.89' | S83°19'13"E |
| L4 | 50.00' | S06°40'47"W |
| L5 | 396.61' | N83°19'18"W |
| L6 | 262.07' | N54°45'41"W |
| L7 | 65.73' | S81°56'11"E |



RENNER & ASSOCIATES, LLC.

616 SIXTH ST. * RAPID CITY, SD 57701
PHONE: 605/721-7310 * FAX: 605/721-7313
EMAIL: GARY@RENNERASSOC.COM



FEBRUARY 26, 2010