

A PORTION OF THE SW1/4 OF THE NE1/4

LOCATED IN SECTION 24, T1N, R7E, BHM  
RAPID CITY, PENNINGTON COUNTY, SOUTH DAKOTA

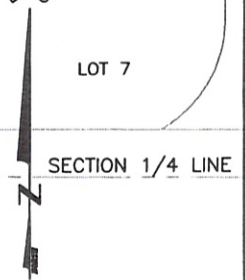
MAR 24 2010

Rapid City Growth Management Department



LINE	LENGTH	BEARING
L1	133.11'	S69°17'20"E
L2	364.26'	S00°00'01"E
L3	81.20'	N89°44'34"W
L4	372.85'	N12°34'45"E

REGISTERED PROFESSIONAL LAND SURVEYOR  
REG. NO. 9213  
ERIC D. HOWARD  
SOUTH DAKOTA  
★ 3-24-10



MARCH 24, 2010

SCALE 1" = 300'



RENNER & ASSOCIATES, LLC.

616 SIXTH ST. \* RAPID CITY, SD 57701  
PHONE: 605/721-7310 \* FAX: 605/721-7313  
EMAIL: GARY@RENNERASSOC.COM