

10PL036

NOTE:
CONDUIT, CURB AND GUTTER, AND SIDEWALK ARE
NOT PROPOSED FOR ELK VALE ROAD FRONTAGE.

#12 LOT #1
HWY 9-48

ELK VALE ROAD



1800 Concession Drive
Rapid City, SD 57703
Phone: (605) 341-7000
Fax: (605) 341-7006
www.cetecengineering.com

cetec
ENGINEERING

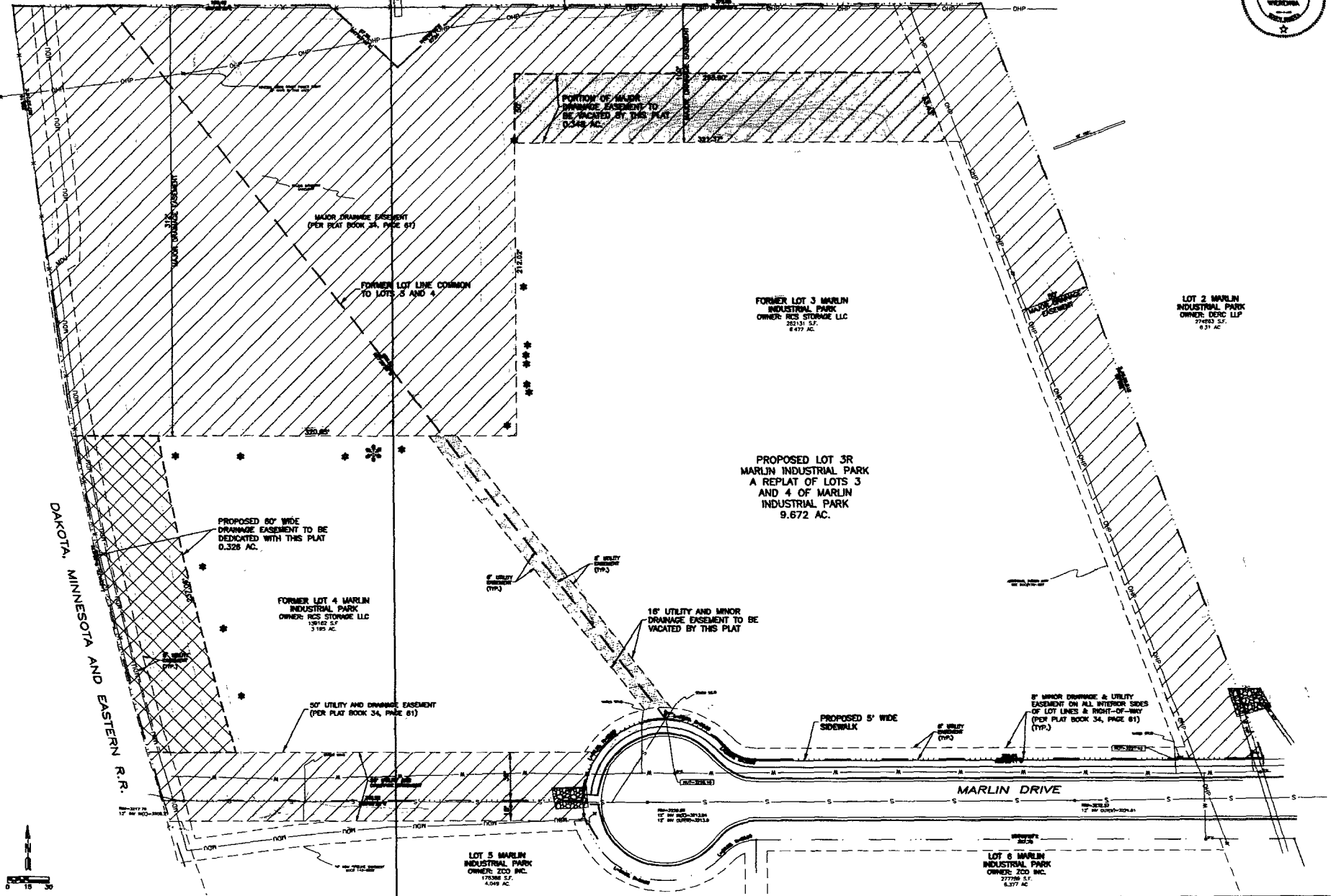
DESIGNED: DJ
DETAILS: DJ
DATE: 3/23/10
APPROVED: X
DATE:

PRELIMINARY PLAT

SHEET DESCRIPTION

LOT 3R MARLIN INDUSTRIAL PARK
(FORMERLY LOTS 3 & 4 OF
MARLIN INDUSTRIAL PARK)

PROJECT
1 OF 1



PORTION OF MAJOR
DRAINAGE EASEMENT TO
BE VACATED BY THIS PLAT
0.348 AC.

MAJOR DRAINAGE EASEMENT
(PER PLAT BOOK 34, PAGE 57)

FORMER LOT LINE COMMON
TO LOTS 3 AND 4

FORMER LOT 3 MARLIN
INDUSTRIAL PARK
OWNER: RCS STORAGE LLC
22133 S.F.
6.477 AC.

LOT 2 MARLIN
INDUSTRIAL PARK
OWNER: DDC LLP
71953 S.F.
6.37 AC.

PROPOSED LOT 3R
MARLIN INDUSTRIAL PARK
A REPLAT OF LOTS 3
AND 4 OF MARLIN
INDUSTRIAL PARK
9.672 AC.

PROPOSED 80' WIDE
DRAINAGE EASEMENT TO BE
DEDICATED WITH THIS PLAT
0.328 AC.

FORMER LOT 4 MARLIN
INDUSTRIAL PARK
OWNER: RCS STORAGE LLC
13912 S.F.
3.185 AC.

16' UTILITY AND MINOR
DRAINAGE EASEMENT TO BE
VACATED BY THIS PLAT

30' UTILITY AND DRAINAGE EASEMENT
(PER PLAT BOOK 34, PAGE 61)

PROPOSED 5' WIDE
SIDEWALK

8' MINOR DRAINAGE & UTILITY
EASEMENT ON ALL INTERIOR SIDES
OF LOT LINES & RIGHT-OF-WAY
(PER PLAT BOOK 34, PAGE 61)
(TYP.)

LOT 5 MARLIN
INDUSTRIAL PARK
OWNER: ZCO INC.
17038 S.F.
4.009 AC.

LOT 6 MARLIN
INDUSTRIAL PARK
OWNER: ZCO INC.
27796 S.F.
6.377 AC.

DAKOTA, MINNESOTA AND EASTERN R.R.

