

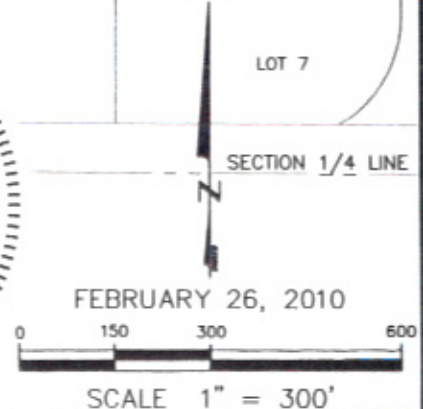
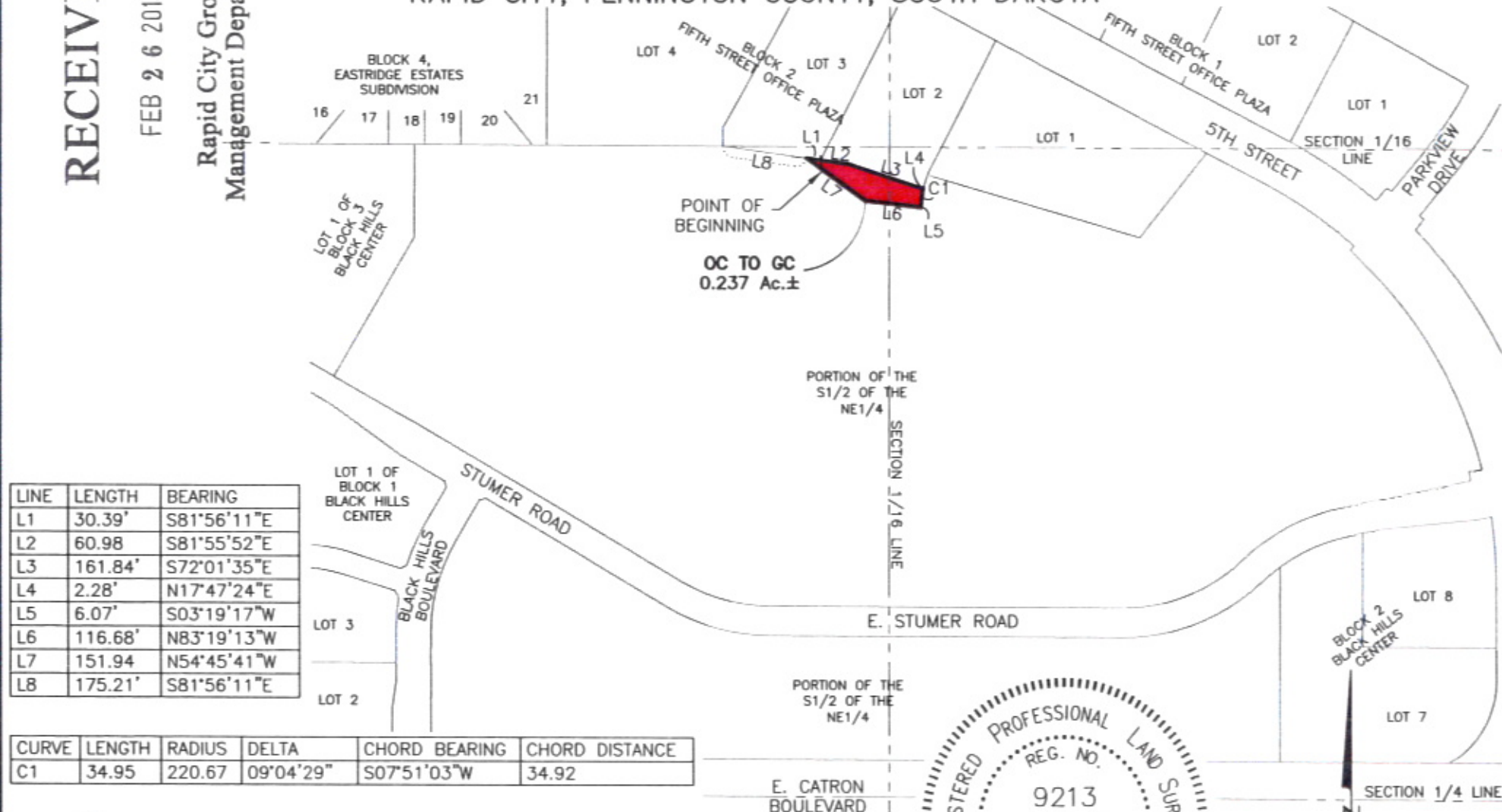
METES AND BOUNDS A PORTION OF THE S1/2 OF THE NE1/4

LOCATED IN SECTION 24, T1N, R7E, BHM
RAPID CITY, PENNINGTON COUNTY, SOUTH DAKOTA

RECEIVED

FEB 26 2010

Rapid City Growth
Management Department



RENNER & ASSOCIATES, LLC.

616 SIXTH ST. * RAPID CITY, SD 57701
PHONE: 605/721-7310 * FAX: 605/721-7313
EMAIL: GARY@RENNERASSOC.COM