

**LAYOUT NOTES**

- ALL DIMENSIONS ARE TO EDGE OF SIDEWALK, TOP BACK OF CURB, EDGE OF PAVEMENT AND OUTSIDE EDGE OF CONCRETE WALL.
- ALL DIMENSIONS ARE IN FEET UNLESS OTHERWISE NOTED.
- CONTRACTOR SHALL FIELD VERIFY ALL COORDINATES AND DIMENSIONS. SEE ARCHITECTURAL DRAWINGS FOR EXACT BUILDING AND FOUNDATION DIMENSION.
- PARKING CALCULATIONS:  
 PARKING SPACES REQUIRED:  
 WAREHOUSING - 25 SPACES/1000 SQFT  
 OFFICE - 5 SPACES/1000 SQFT  
 VAN ACCESSIBLE HANICAP  
 EXISTING BUILDINGS:  
 COLD STORAGE - 5,400 SF  
 OFFICE - 600 SF  
 TOTAL AREA - 6000 SF  
 NEEDED SPACES:  
 WAREHOUSING - 1.35 SPACES  
 OFFICE - 3 SPACES  
 PROPOSED BUILDING:  
 COLD STORAGE - 6000 SF  
 NEEDED SPACES:  
 WAREHOUSING - 1.5 SPACES  
 TOTAL PARKING PROVIDED:  
 GENERAL PARKING - 7 SPACES  
 HANICAP PARKING - 1 SPACE

**EXISTING LEGEND**

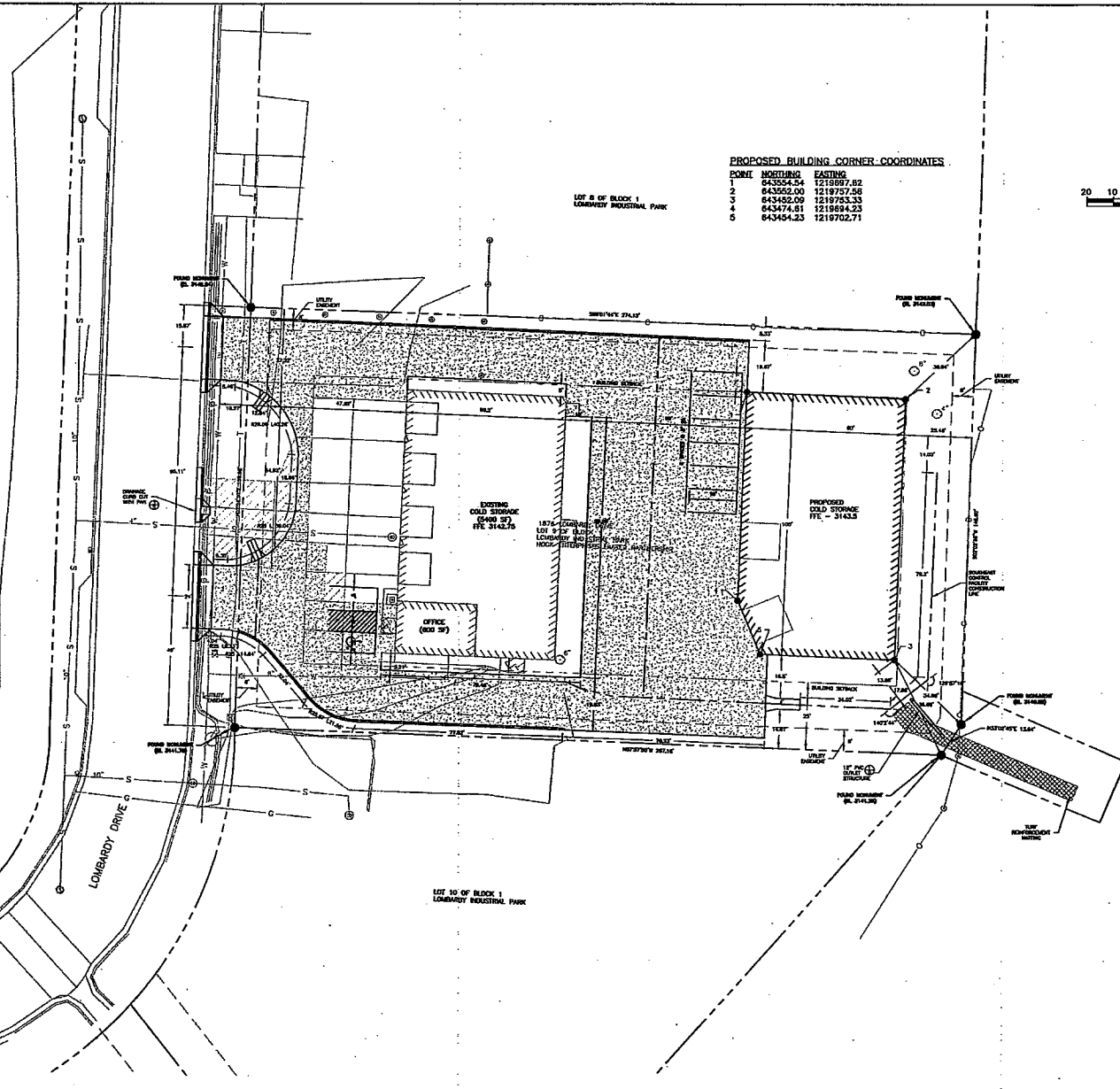
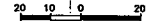
- W FIRE HYDRANT
- H GATE VALVE
- CF POWER POLE
- SM SANITARY SEWER MANHOLE
- CO CLEAN OUT
- SS SANITARY SEWER LINE
- W WATER LINE
- T TELEPHONE LINE
- P POWER LINE
- PL PROPERTY LINE
- EASEMENT LINE
- - - CHAIN LINK FENCE
- MAJOR CONTOUR
- MINOR CONTOUR
- FOUND PROPERTY CORNER

**PROPOSED LEGEND**

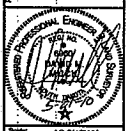
- ♿ HANICAP MARKING
- SPILL CURB
- TYPE B CURB & GUTTER
- REINFORCED PCC SECTION
- 3140 MAJOR CONTOUR
- 3110 MINOR CONTOUR
- 81 SLOPE INDICATOR

**PROPOSED BUILDING CORNER COORDINATES**

POINT	NORTHING	EASTING
1	843554.54	1218997.62
2	843552.00	1218757.58
3	843455.09	1218763.33
4	843474.81	1218994.23
5	843454.23	1218702.71



**Ferber Engineering Company, Inc.**  
 FERC  
 Civil Engineering, Surveying, Transportation, Land Acquisition, GIS  
 728 East Main Street, St. Louis, MO 63101 • Phone: (631) 242-3311



Project: AS SHOWN  
 Designer: [Name]  
 Checker: [Name]  
 Date: APRIL 2010  
 Project No: 05-21-10  
 Drawing No: J10-110  
 Issued For: [Name]  
 Issued Date: MARCH 2010

**HOOK ENTERPRISES LIMITED PARTNERSHIP**  
**LOT 9 OF BLOCK 1 LOMBARDY INDUSTRIAL PARK**  
**1876 LOMBARDY DRIVE**

05-21-10 PA\0-110\AutoCAD\Plan\Sheet\10-110-SITE.dwg