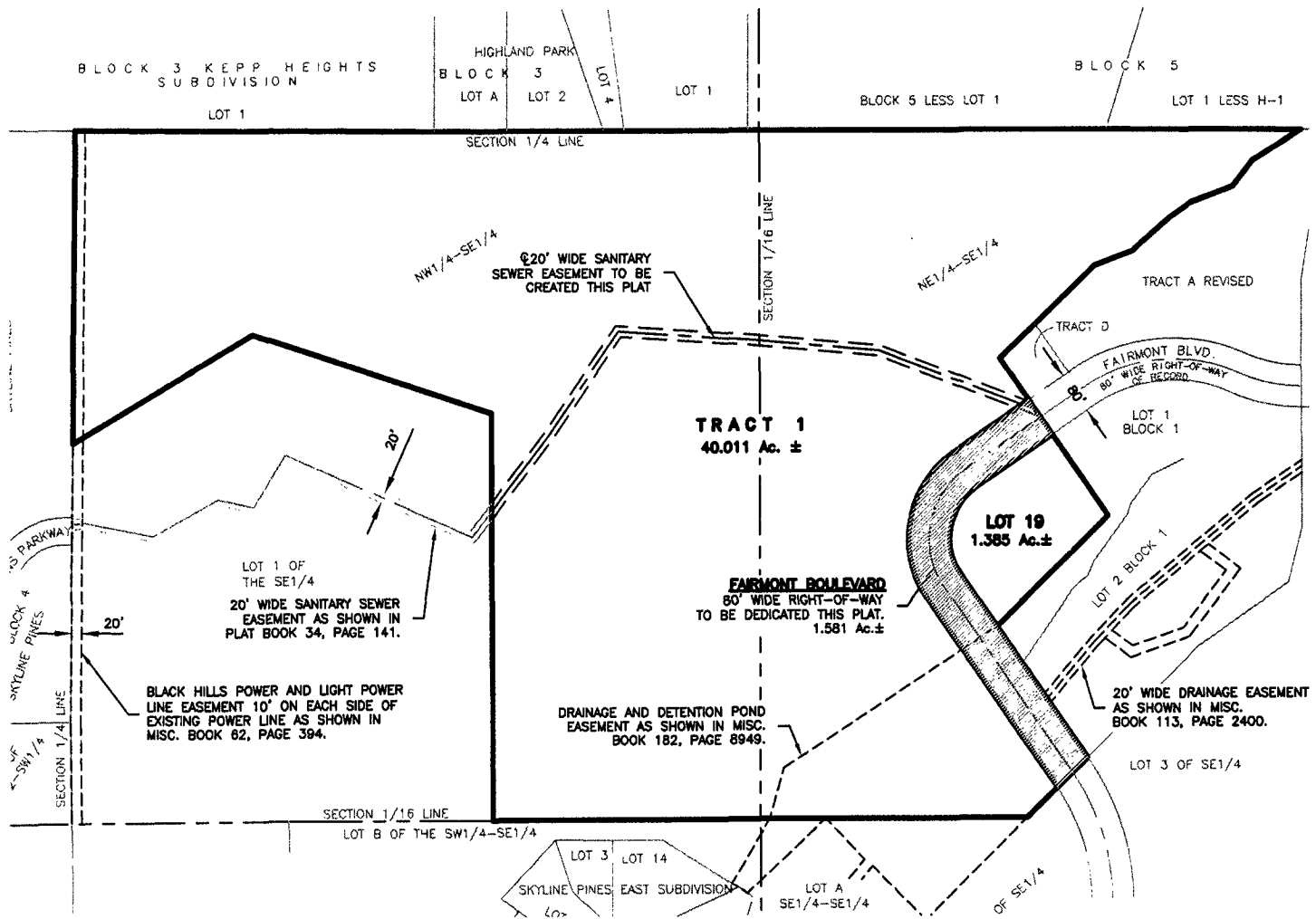


LAYOUT PLAT OF
TRACT 1, LOT 19, AND
DEDICATED FAIRMONT BOULEVARD RIGHT-OF-WAY
SKYLINE PINES EAST SUBDIVISION
 (formerly a portion of the N1/2 of the SE1/4)
 LOCATED IN THE N1/2 OF THE SE1/4,
 SECTION 11, T1N, R7E, BHM
 RAPID CITY, PENNINGTON COUNTY, SOUTH DAKOTA



CITY HALL 1903

Renner & Associates, LLC.

616 Sixth St. * Rapid City, SD 57701 * 605/721-7310
 FAX: 605/721-7313 * E-MAIL: Gary@RennerAssoc.com
 * Spearfish 605/717-0016 *



N.T.S.