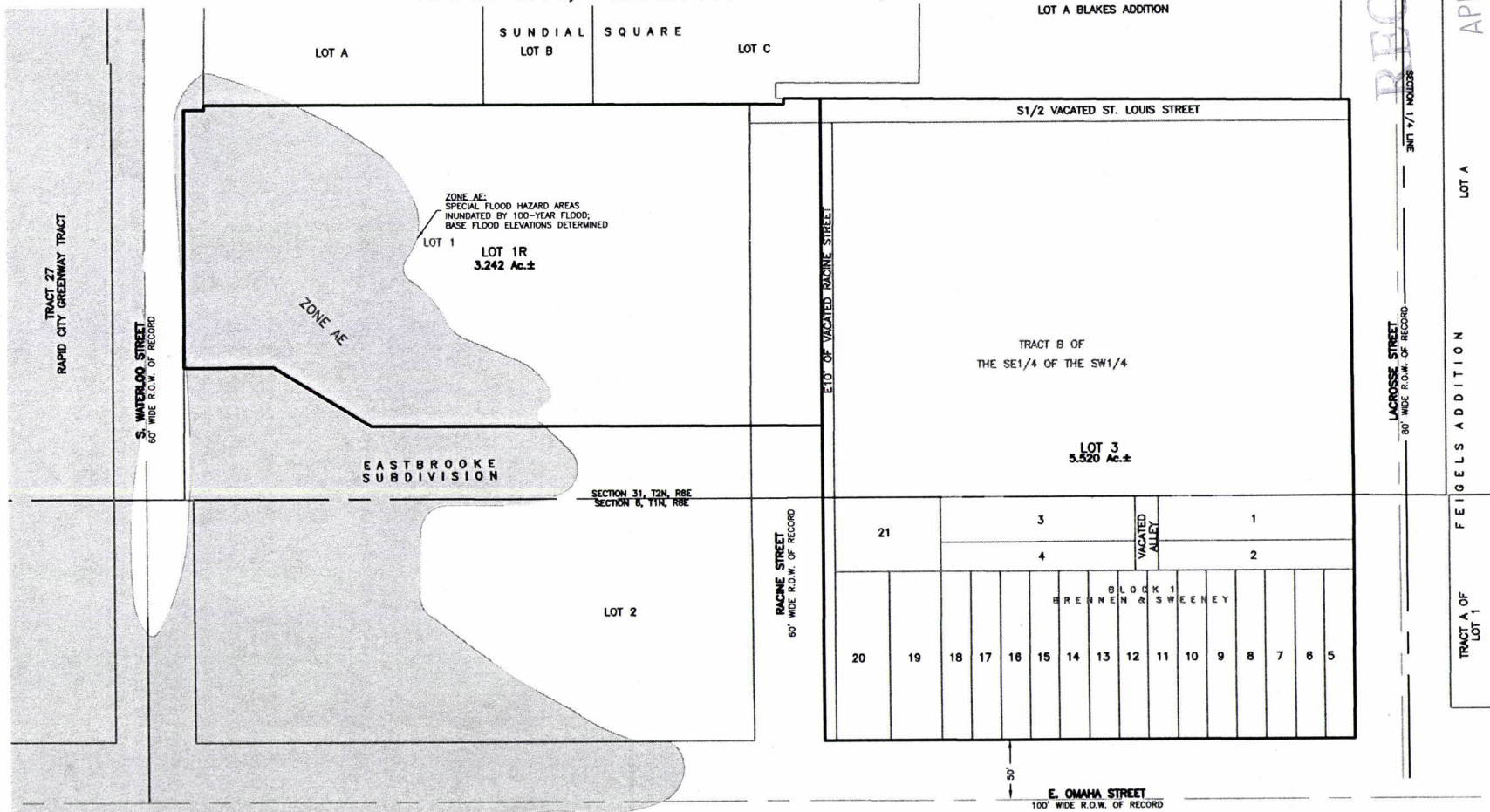


PLAT OF
LOTS 1R AND 3,
EASTBROOKE SUBDIVISION

(formerly Lots 1-21 and Vacated Alley of Block 1 of Brennen & Sweeney Addition of Section 6, T1N, R8E;
Lot 1 of Eastbrooke Subdivision, a Portion of the S1/2 of Vacated St. Louis Street Right-of-Way,
a Portion of the E10' of Vacated Racine Street Right-of-Way &
Tract B of the SE1/4 of the SW1/4 of Section 31, T2N, R8E, BHM)
ALL LOCATED IN THE SE1/4 OF THE SW1/4 OF SECTION 31, T2N, R8E
& IN THE NE1/4 OF THE NW1/4 OF SECTION 6, T1N, R8E, BHM,
RAPID CITY, PENNINGTON COUNTY, SOUTH DAKOTA



RECEIVED

APR 30 2010

Rapid City Growth
Management Department

LOT A

FEIGELS ADDITION

TRACT A OF LOT 1



RENNER & ASSOCIATES, LLC.

616 SIXTH ST. * RAPID CITY, SD 57701
PHONE: 605/721-7310 * FAX: 605/721-7313
EMAIL: GARY@RENNERASSOC.COM

APRIL 30, 2010

SCALE: NTS