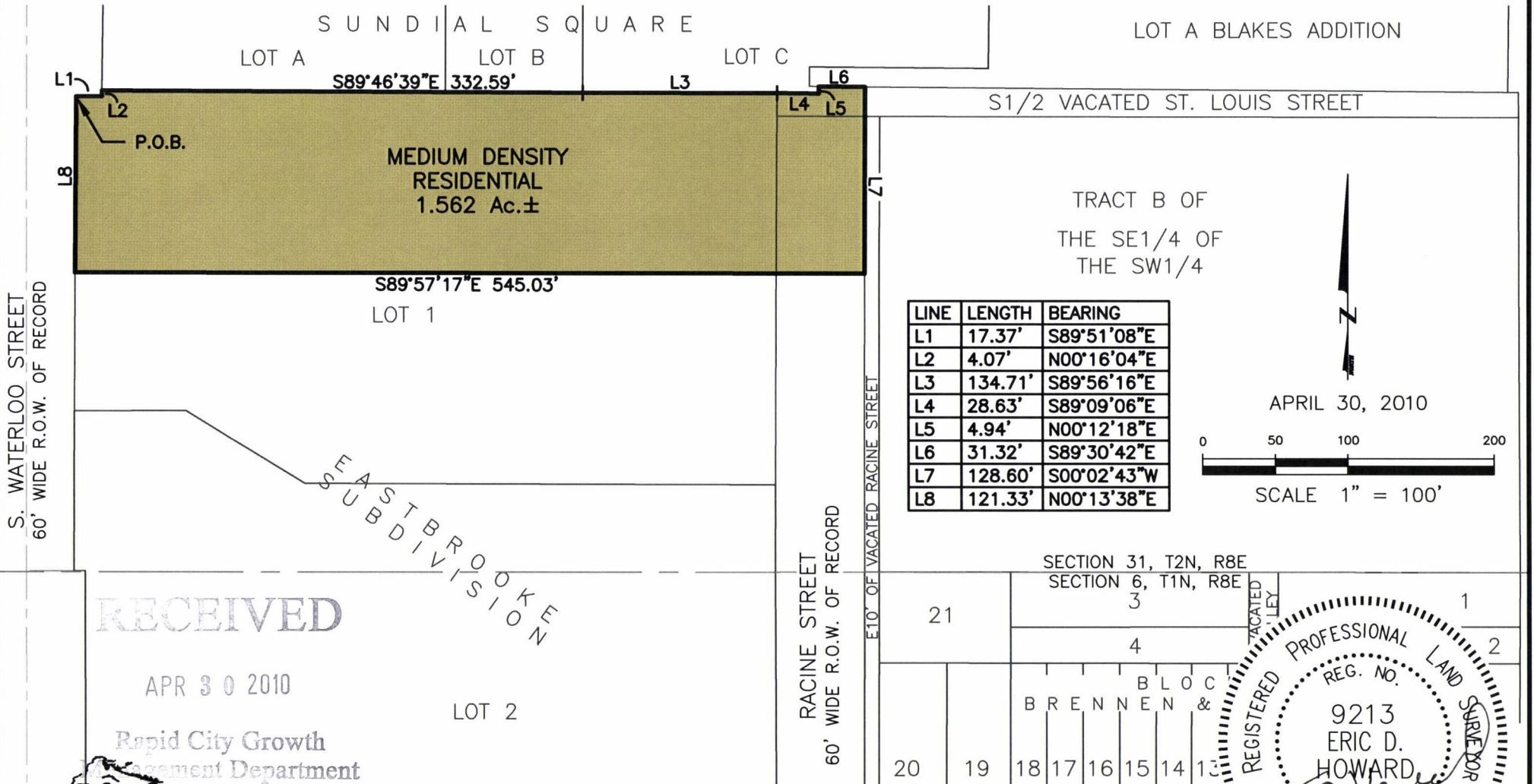
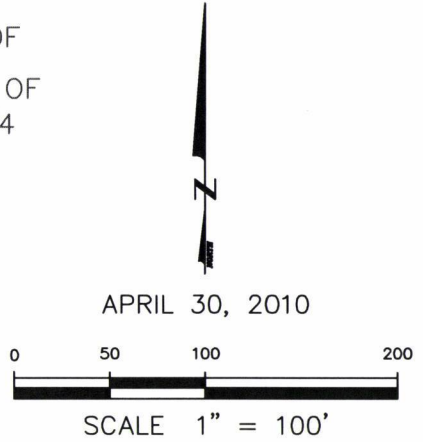


CITY OF RAPID CITY FUTURE LAND USE MAP

A PORTION OF LOT 1 OF EASTBROOKE SUBDIVISION,
 A PORTION OF THE S1/2 OF VACATED ST. LOUIS STREET RIGHT-OF-WAY, AND
 A PORTION OF RACINE STREET RIGHT-OF-WAY,
 SECTION 31, T2N, R8E, BHM,
 RAPID CITY, PENNINGTON COUNTY, SOUTH DAKOTA



LINE	LENGTH	BEARING
L1	17.37'	S89°51'08"E
L2	4.07'	N00°16'04"E
L3	134.71'	S89°56'16"E
L4	28.63'	S89°09'06"E
L5	4.94'	N00°12'18"E
L6	31.32'	S89°30'42"E
L7	128.60'	S00°02'43"W
L8	121.33'	N00°13'38"E



S. WATERLOO STREET
60' WIDE R.O.W. OF RECORD

RACINE STREET
60' WIDE R.O.W. OF RECORD

E10' OF VACATED RACINE STREET

EASTBROOKE SUBDIVISION

RECEIVED

APR 30 2010

Rapid City Growth
Management Department



CITY HALL 1903

RENNER & ASSOCIATES, LLC.

616 SIXTH ST. * RAPID CITY, SD 57701
 PHONE: 605/721-7310 * FAX: 605/721-7313
 EMAIL: GARY@RENNERASSOC.COM

