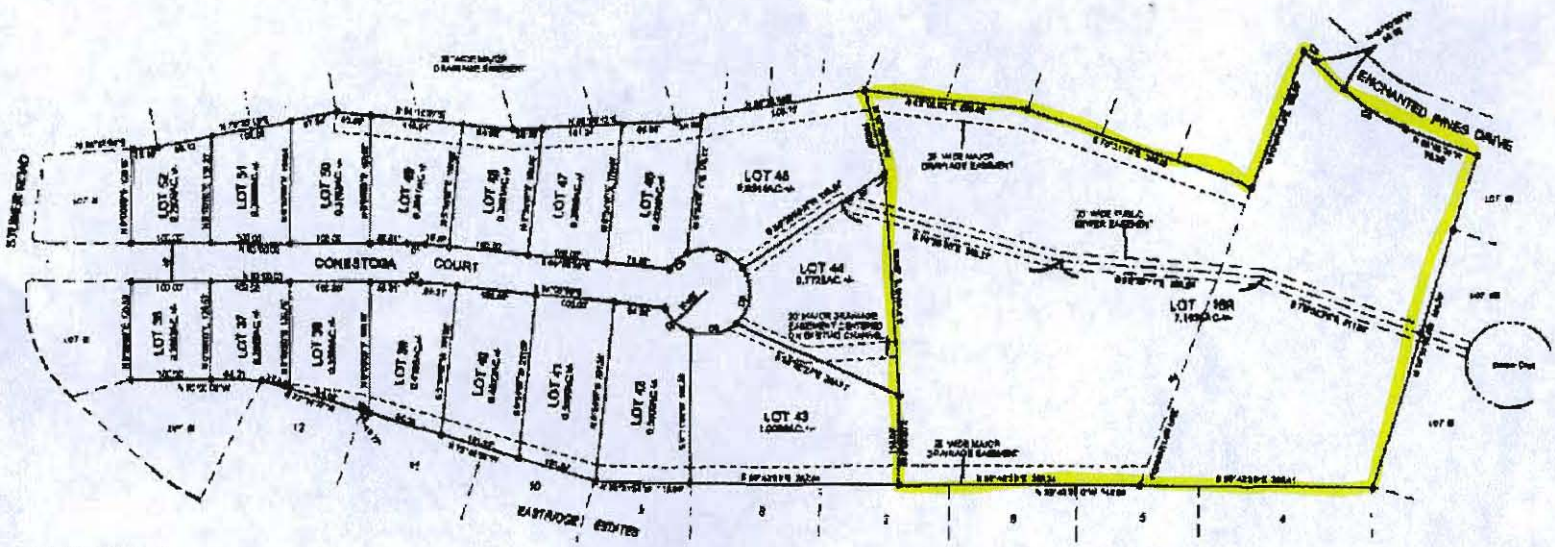
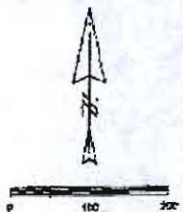


PRELIMINARY PLAT OF LOT 18R AND LOTS 36 THRU 52 IN BLOCK 1 OF PLM SUBDIVISION  
 LOCATED IN NW1/4 OF SECTION 24, T1N, R7E, B.H.M. - RAPID CITY, PENNINGTON COUNTY, SOUTH DAKOTA



Area dedicated to public right-of-way by this plat = 0.8786 ac +/-

All Major Drainage Easements shown hereon shall be kept free of all obstructions including but not limited to buildings, walls, fences, hedges, trees and shrubs. These easements grant to all public authorities the right to locate, operate, maintain, replace and repair such improvements and structures as it deems expedient to facilitate drainage from any source.

Major Utility & Drainage Easements - If on the interior side of all property lines adjacent to public right of way.

If minor drainage & utility easements are hereby established on the interior side of all lot lines except where major drainage easements are located.

Curve	Chord Angle	Radius	Area	Tangent	Chord	Chord Bearing
1	84°07'11"	224.39	22.13	11.57	73.12	S 87°02'54.87"E
2	84°07'11"	178.55	15.28	8.05	18.20	S 87°02'54.87"E
3	31°54'03.74"	85.00	30.36	18.29	30.17	N 48°18'17.07"E
4	88°41'02.74"	85.00	94.78	84.11	83.48	S 88°28'10.78"E
5	63°48'18.87"	85.00	61.30	34.20	88.06	S 14°48'55.47"W
6	63°48'18.87"	85.00	61.21	34.21	88.10	S 78°34'28.74"W
7	48°39'28.74"	85.00	47.03	28.08	48.81	N 48°02'31.87"W
8	22°47'18.87"	228.00	83.84	47.87	63.81	N 58°28'21.87"W
9	4°30'53.74"	174.00	18.28	8.55	18.37	N 48°13'02.74"W

Prepared by:  
 Hanson Surveying & Mapping  
 837 Horse Barn Drive  
 Rapid City, SD 57701  
 January 28, 2010

RECEIVED

FEB - 8 2010

Rapid City Growth  
 Management Department