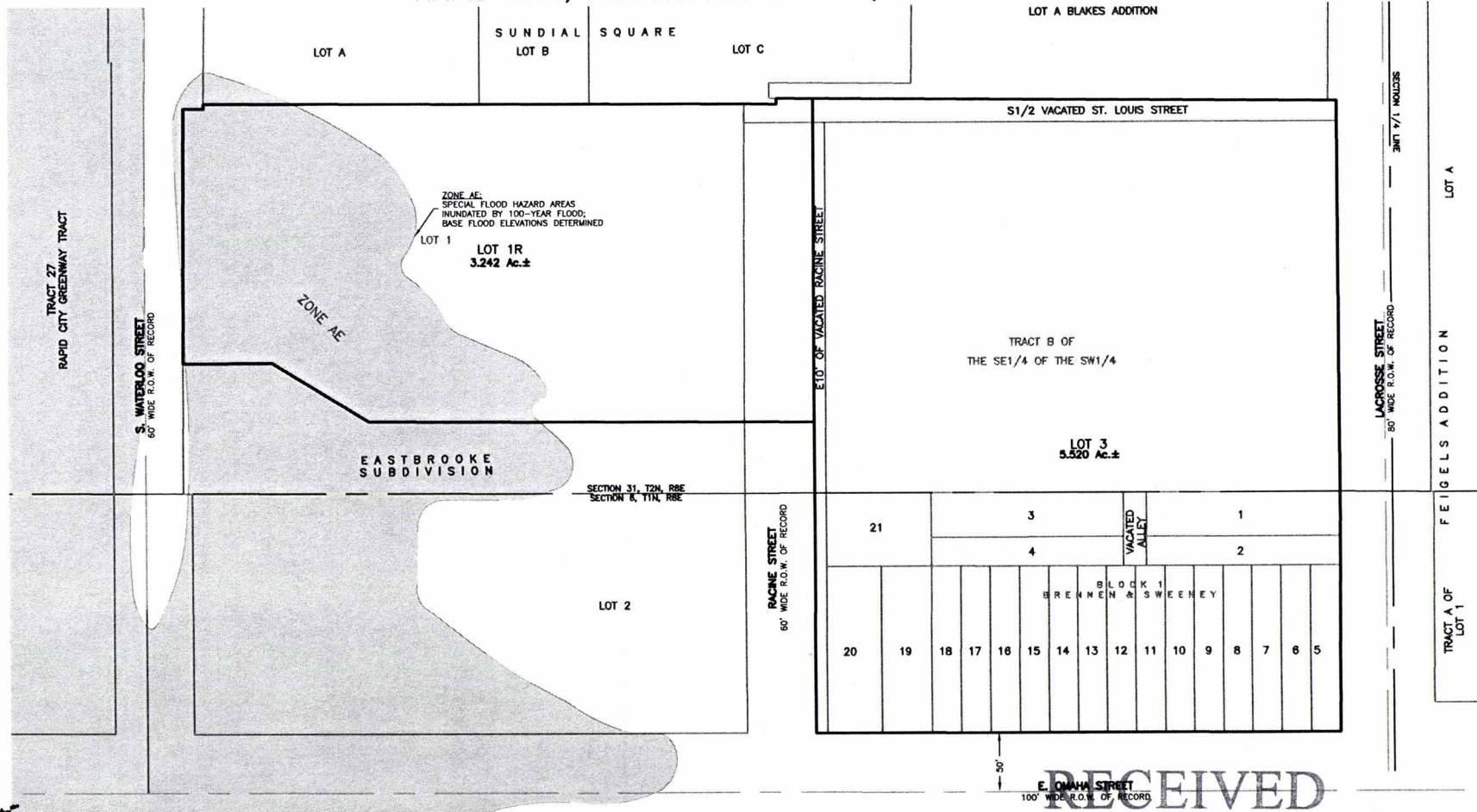


PLAT OF  
LOTS 1R AND 3,  
EASTBROOKE SUBDIVISION

(formerly Lots 1-21 and Vacated Alley of Block 1 of Brennen & Sweeney Addition of Section 6, T1N, R8E;  
Lot 1 of Eastbrooke Subdivision, a Portion of the S1/2 of Vacated St. Louis Street Right-of-Way,  
a Portion of the E10' of Vacated Racine Street Right-of-Way &  
Tract B of the SE1/4 of the SW1/4 of Section 31, T2N, R8E, BHM)  
ALL LOCATED IN THE SE1/4 OF THE SW1/4 OF SECTION 31, T2N, R8E  
& IN THE NE1/4 OF THE NW1/4 OF SECTION 6, T1N, R8E, BHM,  
RAPID CITY, PENNINGTON COUNTY, SOUTH DAKOTA



**RENNER & ASSOCIATES, LLC.**

616 SIXTH ST. \* RAPID CITY, SD 57701  
PHONE: 605/721-7310 \* FAX: 605/721-7313  
EMAIL: GARY@RENNERASSOC.COM

**RECEIVED**

APR 30 2010

APRIL 30, 2010

SCALE: NTS

Rapid City South  
Management Department

