

CITY OF RAPID CITY FUTURE LAND USE MAP  
A PORTION OF LOT 1 OF EASTBROOKE SUBDIVISION &  
A PORTION OF RACINE STREET RIGHT-OF-WAY  
SECTION 31, T2N, R8E, BHM,  
RAPID CITY, PENNINGTON COUNTY, SOUTH DAKOTA

Rapid City Growth  
Management Department

APR 30 2010

RECEIVED

SUNDIAL SQUARE

LOT A

LOT B

LOT C

LOT A BLAKES ADDITION

S1/2 VACATED ST. LOUIS STREET

TRACT B OF  
THE SE1/4 OF  
THE SW1/4

LOT 1

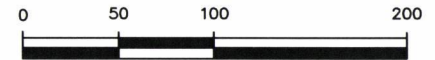
S89°57'17"E 545.03'

MOBILE HOME  
PARK  
1.680 Ac.±

S00°02'43"W 145.48'

LINE	LENGTH	BEARING
L1	60.52'	N89°51'02"W
L2	96.18'	N58°41'15"W
L3	77.04'	S89°54'47"W
L4	95.04'	N00°13'38"E

APRIL 29, 2010



SCALE 1" = 100'

S. WATERLOO STREET  
60' WIDE R.O.W. OF RECORD

L4

L3

P.O.B.

L2

N89°51'02"W 325.56'

RACINE STREET  
60' WIDE R.O.W. OF RECORD

E10' OF VACATED RACINE STREET

EASTBROOKE  
SUBDIVISION

LOT 2

SECTION 31, T2N, R8E  
SECTION 6, T1N, R8E

21

1

2

BLOCC  
BRENNEN &

20

19

18

17

16

15

14

13



CITY HALL 1903

RENNER & ASSOCIATES, LLC.

616 SIXTH ST. \* RAPID CITY, SD 57701  
PHONE: 605/721-7310 \* FAX: 605/721-7313  
EMAIL: GARY@RENNERASSOC.COM

