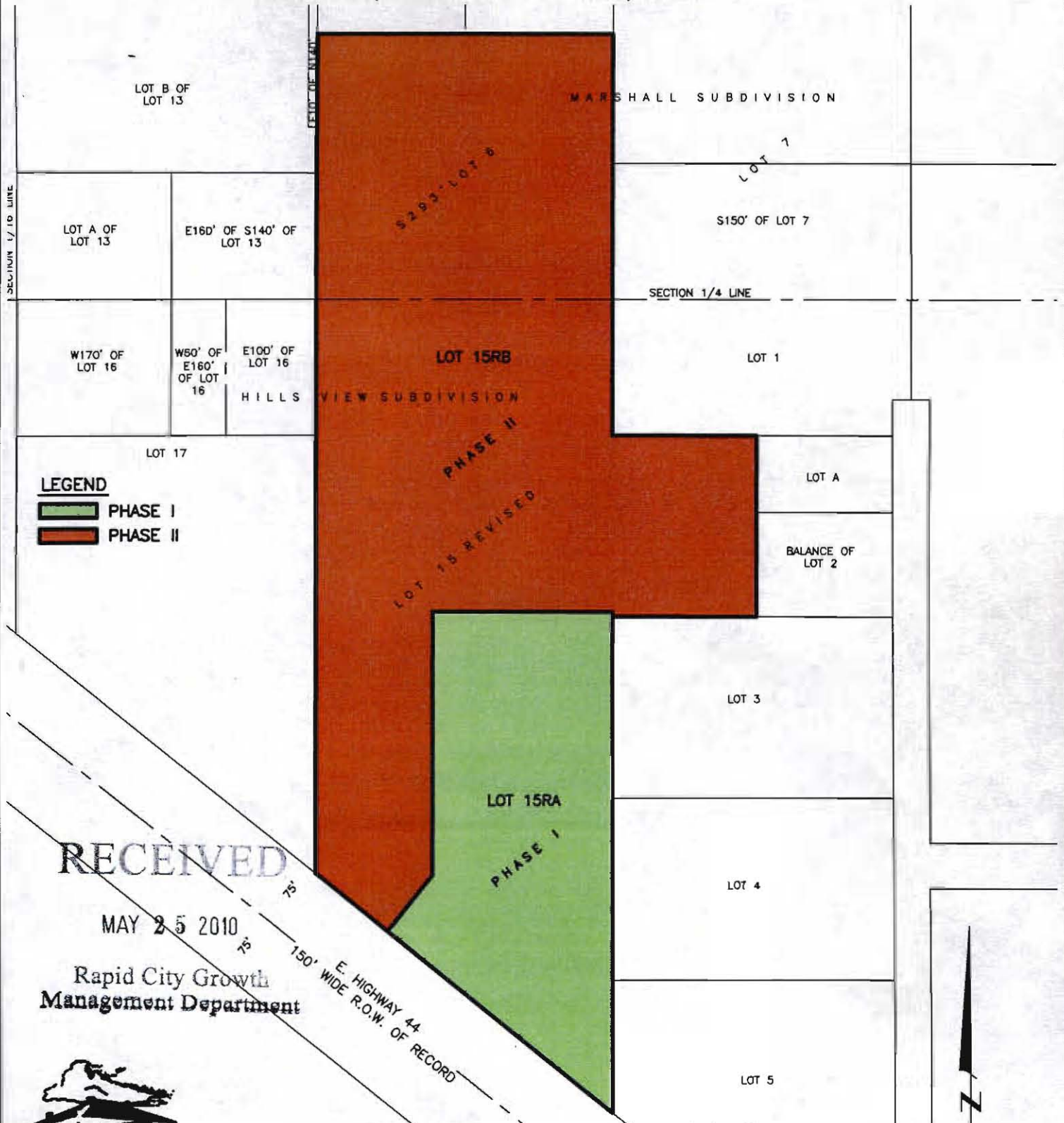


LOTS 15RA AND 15RB OF HILLS VIEW SUBDIVISION

LOCATED IN THE NE1/4 OF THE SE1/4, AND IN THE SE1/4 OF THE NE1/4 OF SECTION 5, T1N, R8E, BHM
RAPID CITY, PENNINGTON COUNTY, SOUTH DAKOTA



LEGEND

- PHASE I
- PHASE II

RECEIVED

MAY 25 2010

Rapid City Growth Management Department



CITY HALL 1903

Renner & Associates, LLC.

616 Sixth St. * Rapid City, SD 57701 * 605/721-7310
 FAX: 605/721-7313 * E-MAIL: Gary@RennerAssoc.com
 * Spearfish 605/717-0016 *



N.T.S.