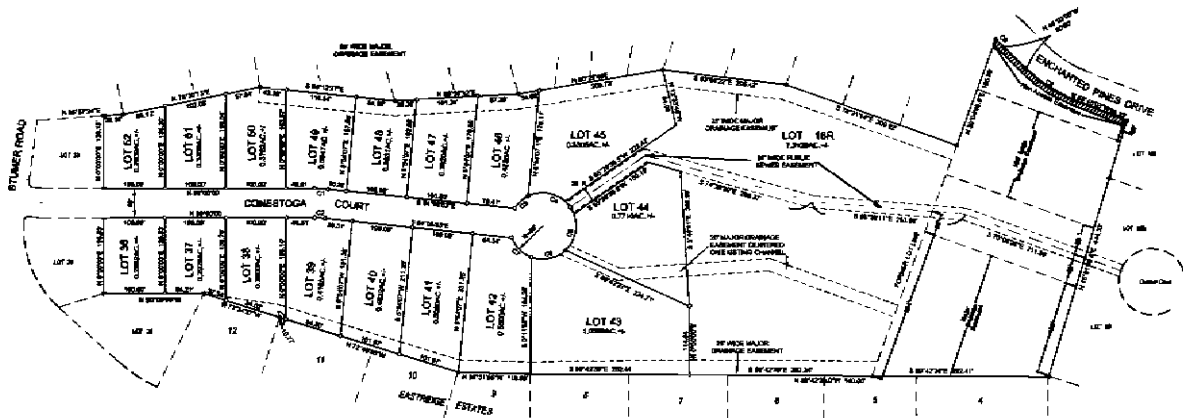
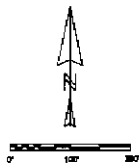


PRELIMINARY PLAT OF LOT 16R AND LOTS 36 THRU 52 IN BLOCK 1 OF PLM SUBDIVISION
 LOCATED IN NW1/4 OF SECTION 24, T1N, R7E, B.H.M. - RAPID CITY, PENNINGTON COUNTY, SOUTH DAKOTA



Area dedicated to public right-of-way by title plat = 0.9755 Ac.±

All Major Drainage Easements shown herein shall be kept free of all obstructions including but not limited to buildings, well sources, headgates, levees and shrubs. These easements grant to all public subdivisions the right to construct, operate, maintain, inspect and repair such improvements and structures as it deems expedient to facilitate drainage from any source.

If Major Utility & Drainage Easement: If on the interior side of all property lines adjacent to public right of way.

If minor drainage & utility easements are hereby established on the interior side of all lot lines except where major drainage easements are located.

Curve	Delta Angle	Radius	Arc	Tangent	Chord	Chord Bearing
1	3°54'02.1"	224.50	23.13	11.57	23.12	S 87°02'58.8"E
2	3°54'02.1"	179.50	18.98	9.02	18.07	S 87°02'58.8"E
3	31°30'03.8"	58.00	30.38	15.08	35.17	N 48°28'11.3"E
4	18°29'02.7"	85.00	38.59	64.11	65.38	S 68°28'10.2"E
5	63°45'45.5"	58.00	65.50	34.28	59.09	S 44°46'05.4"W
6	63°45'45.5"	55.00	61.21	34.21	58.10	S 73°42'25.7"W
7	48°50'58.2"	55.00	47.03	28.08	45.81	N 42°02'54.5"W
8	22°40'58.5"	228.00	63.88	47.52	83.21	N 85°34'51.5"W
9	4°20'53"	174.00	19.28	9.65	18.27	N 48°13'02"W

Prepared by:
 Heron Surveying & Mapping
 822 HomeBlvd Drive
 Rapid City, SD 57701

January 25, 2010
 Revised May 2010