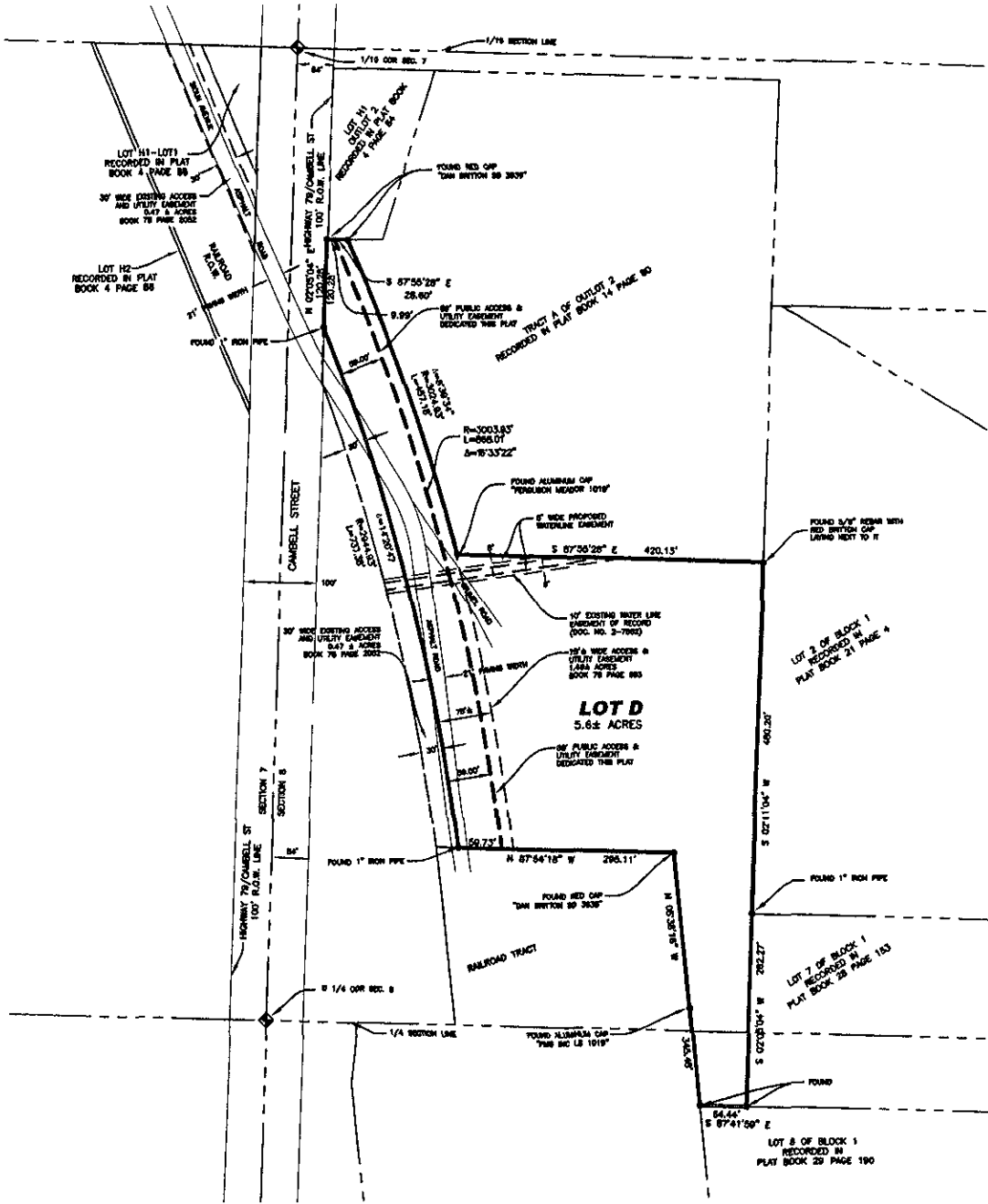


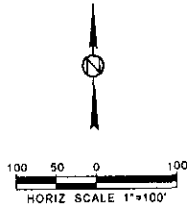
**PRELIMINARY PLAT OF LOT D OF BLOCK 1 OF SOUTH CREEK INDUSTRIAL PARK,**  
 FORMERLY A PORTION OF BLOCK 1 OF SOUTH CREEK INDUSTRIAL PARK  
 LOCATED IN THE SW1/4NW1/4 AND THE NW1/4SW1/4 OF SECTION 8, T1N, R8E, B.H.M.,  
 RAPID CITY, PENNINGTON COUNTY, SOUTH DAKOTA

10PL019



**NOTES:**

- 1) CONTOUR INTERVAL IS 2'
- 2) VERTICAL DATUM NAVD29
- 3) BASIS OF BEARING: SOUTH DAKOTA STATE PLANE SOUTH ZONE, NAD83 GRID, BEARING RAPID CITY, SD CONTROL
- 4) DISTANCES DISPLAYED AS GROUND DISTANCES




FOR REVIEW ONLY RECEIVED

MAR 26 2010

Rapid City Growth  
 Department

Plat prepared by:  
 517 7th street rapid city sd 57701  
 ph 605.342 9470 fax: 605 342 2377  
 www.4front.biz

ARCHITECTURE . ENGINEERING  
 GIS SURVEYING



**PRELIMINARY PLAT OF LOT D OF BLOCK 1 OF SOUTH CREEK INDUSTRIAL PARK,**

10PL019

FORMERLY A PORTION OF BLOCK 1 OF SOUTH CREEK INDUSTRIAL PARK  
LOCATED IN THE SW1/4NW1/4 AND THE NW1/4SW1/4 OF SECTION 8, T1N, R8E, B.H.M.,  
RAPID CITY, PENNINGTON COUNTY, SOUTH DAKOTA

CERTIFICATE OF OWNERSHIP

STATE OF SOUTH DAKOTA  
COUNTY OF PENNINGTON S S

I, \_\_\_\_\_, DO HEREBY CERTIFY THAT WE ARE THE OWNERS OF THE LAND SHOWN AND DESCRIBED HEREON, THAT THE SURVEY WAS DONE AT OUR REQUEST FOR THE PURPOSE INDICATED HEREON, THAT WE DO HEREBY APPROVE THE SURVEY AND WITHIN PLAT OF SAID LAND, AND THAT THE DEVELOPMENT OF THIS LAND SHALL CONFORM TO ALL EXISTING APPLICABLE ZONING SUBDIVISION, AND EROSION AND SEDIMENT CONTROL REGULATIONS

ANY LAND SHOWN ON THE WITHIN PLAT AS DEDICATED TO PUBLIC RIGHT-OF-WAY IS HEREBY DEDICATED TO PUBLIC USE AND PUBLIC UTILITY USE AS SUCH FOREVER, BUT SUCH DEDICATION SHALL NOT BE CONSTRUED TO BE A DONATION OF THE FEE OF SUCH LAND

OWNERS  
\_\_\_\_\_  
\_\_\_\_\_

ON THIS \_\_\_\_\_ DAY OF \_\_\_\_\_, 20\_\_\_\_, BEFORE ME, A NOTARY PUBLIC, PERSONALLY APPEARED \_\_\_\_\_, MANAGING MEMBER, TO BE THE PERSON DESCRIBED IN THE FOREGOING INSTRUMENT AND ACKNOWLEDGED TO ME THAT HE SIGNED THE SAME

NOTARY PUBLIC \_\_\_\_\_  
MY COMMISSION EXPIRES, \_\_\_\_\_

IN WITNESS WHEREOF, I HAVE SET MY HAND AND SEAL

CERTIFICATION OF GROWTH MANAGEMENT DIRECTOR

STATE OF SOUTH DAKOTA  
COUNTY OF PENNINGTON S S

I, GROWTH MANAGEMENT DIRECTOR OF CITY OF RAPID CITY, HAVE REVIEWED THIS PLAT AND HAVE FOUND IT TO CONFORM TO THE SUBDIVISION REQUIREMENTS OF CHAPTER 16.08 035 OF THE RAPID CITY MUNICIPAL CODE AND AS SUCH I HAVE APPROVED THIS PLAT AS FINAL PLAT

\_\_\_\_\_  
DAY OF \_\_\_\_\_, 20\_\_\_\_.

\_\_\_\_\_  
GROWTH MANAGEMENT DIRECTOR OF THE CITY OF RAPID CITY

CERTIFICATE OF SURVEYOR

I, RANDY L. DEIBERT, BEING A REGISTERED LAND SURVEYOR IN THE STATE OF SOUTH DAKOTA, NO 5086 ON THE BASIS OF MY KNOWLEDGE INFORMATION AND BELIEF, CERTIFY THAT AT THE REQUEST TO THE OWNER(S) LISTED HEREON, THAT AT THE REQUEST OF \_\_\_\_\_ THE SURVEY REPRESENTED BY THIS PLAT WAS MADE UNDER MY SUPERVISION, ON THE GROUND TO THE NORMAL STANDARD OF CARE OF PROFESSIONAL LAND SURVEYORS PRACTICING IN THE STATE OF SOUTH DAKOTA THIS SURVEY DOES NOT CONSTITUTE A TITLE SEARCH TO DETERMINE OWNERSHIP OF EASEMENTS OF RECORD A PERFORMED BY MYSELF OR BY FOURFRONT DESIGN, INC I FURTHER STATE THAT I DID NOT OBTAIN THE SIGNATURES FOR THE CERTIFICATES OTHER THAN THE SURVEYOR CERTIFICATE

\_\_\_\_\_  
RANDY L. DEIBERT, R.L.S. 5086 DATE \_\_\_\_\_

CERTIFICATE OF HIGHWAY OR STREET AUTHORITY

THE LOCATION OF THE PROPOSED PROPERTY LINES WITH RESPECT TO THE HIGHWAY OR STREET AS SHOWN HEREON IS HEREBY APPROVED ANY APPROACHES OR ACCESS TO THE HIGHWAY OR STREET WILL REQUIRE ADDITIONAL APPROVAL DATED THIS \_\_\_\_\_ DAY OF \_\_\_\_\_, 20\_\_\_\_

\_\_\_\_\_  
HIGHWAY OR STREET AUTHORITY

CERTIFICATE OF DIRECTOR OF EQUALIZATION

I, DIRECTOR OF EQUALIZATION OF PENNINGTON COUNTY, DO HEREBY CERTIFY THAT I HAVE ON RECORD IN MY OFFICE A COPY OF THE WITHIN-DESCRIBED PLAT

APPROVED \_\_\_\_\_  
DIRECTOR OF EQUALIZATION OF PENNINGTON COUNTY

CERTIFICATE OF FINANCE OFFICER

I, FINANCE OFFICER OF CITY OF RAPID CITY, DO HEREBY CERTIFY THAT THE GROWTH MANAGEMENT DIRECTOR OF THE CITY OF RAPID CITY, HAS APPROVED THIS FINAL PLAT AS SHOWN HEREON

DATED THIS \_\_\_\_\_ DAY OF \_\_\_\_\_, 20\_\_\_\_

\_\_\_\_\_  
FINANCE OFFICER OF THE CITY OF RAPID CITY

CERTIFICATE OF FINANCE OFFICER

I, FINANCE OFFICER OF THE CITY OF RAPID CITY, DO HEREBY CERTIFY THAT ALL SPECIAL ASSESSMENTS WHICH ARE LIENS UPON THE WITHIN-DESCRIBED LANDS ARE FULLY PAID ACCORDING TO THE RECORDS OF MY OFFICE

DATED THIS \_\_\_\_\_ DAY OF \_\_\_\_\_, 20\_\_\_\_

\_\_\_\_\_  
FINANCE OFFICER OF THE CITY OF RAPID CITY

CERTIFICATE OF COUNTY TREASURER

I, TREASURER OF PENNINGTON COUNTY, DO HEREBY CERTIFY THAT ALL TAXES WHICH ARE LIENS UPON THE WITHIN-DESCRIBED LANDS ARE FULLY PAID ACCORDING TO THE RECORDS OF MY OFFICE

DATED THIS \_\_\_\_\_ DAY OF \_\_\_\_\_, 20\_\_\_\_

\_\_\_\_\_  
TREASURER OF PENNINGTON COUNTY

RESOLUTION BY GOVERNING BOARD

STATE OF SOUTH DAKOTA  
COUNTY OF PENNINGTON S S

I, AUDITOR OF PENNINGTON COUNTY, DO HEREBY CERTIFY THAT AT AN OFFICIAL MEETING HELD ON THE \_\_\_\_\_ DAY OF \_\_\_\_\_, 20\_\_\_\_, THE COUNTY COMMISSIONERS BY RESOLUTION DID APPROVE THE PLAT AS SHOWN AND DESCRIBED

\_\_\_\_\_  
AUDITOR OF PENNINGTON COUNTY

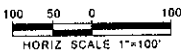
CERTIFICATE OF REGISTER OF DEEDS

STATE OF SOUTH DAKOTA  
COUNTY OF PENNINGTON S S

FILED THIS \_\_\_\_\_ DAY OF \_\_\_\_\_, 20\_\_\_\_

IN BOOK \_\_\_\_\_ OF PLATS, ON PAGE \_\_\_\_\_

\_\_\_\_\_  
REGISTER OF DEEDS



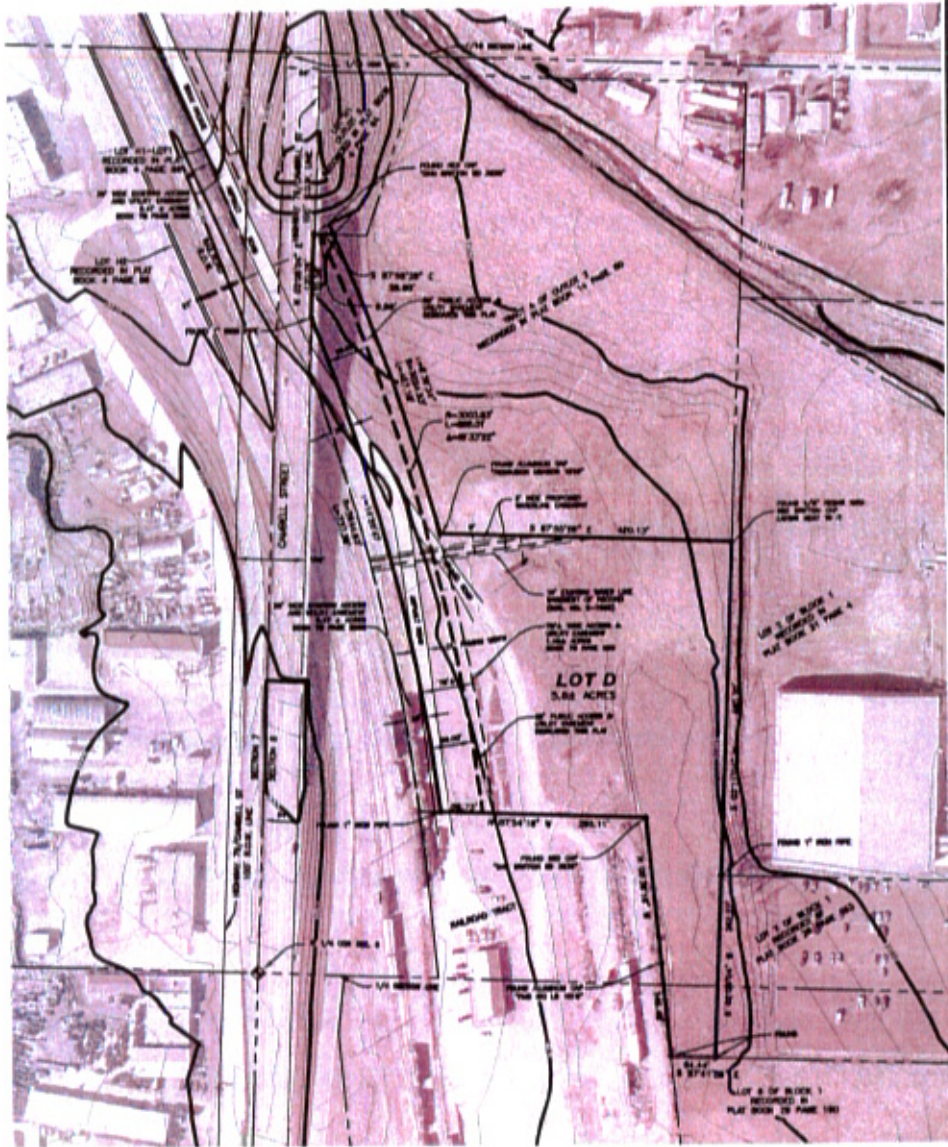
**Plot prepared by:**

517 7th street rapid city sd 57701  
ph 605 342 9470 fax 605 342 2377  
www 4front biz

ARCHITECTURE ENGINEERING  
GIS SURVEYING

FOURFRONT  
DESIGN INC

**DRAWING P1**  
**LOT D OF BLOCK 1 OF SOUTH CREEK INDUSTRIAL PARK,**  
FORMERLY A PORTION OF BLOCK 1 OF SOUTH CREEK INDUSTRIAL PARK  
LOCATED IN THE SW1/4NW1/4 AND THE NW1/4SW1/4 OF SECTION 8, T1N, R8E, B.H.M.,  
RAPID CITY, PENNINGTON COUNTY, SOUTH DAKOTA



FOR REVIEW ONLY

- NOTES:**
- 1) CONTOUR INTERVAL IS 2'
  - 2) VERTICAL DATUM NAVD29
  - 3) BASIS OF BEARING: SOUTH DAKOTA STATE PLANE SOUTH ZONE, NAD83 GRID, BEARING RAPID CITY, SD CONTROL
  - 4) DISTANCES DISPLAYED AS GROUND DISTANCES



Plot prepared by  
 317 7th street rapid city sd 57701  
 ph: 605 342 9470 fax: 605 342 2374  
 www.4lgn1.biz

**RECORDED**

ARCHITECTURE ENGINEERING  
 GIS SURVEYING

1 FRONT

MAR 26 2010

Rapid City Office