

METES AND BOUNDS

A PORTION OF THE
S1/2 OF THE NE1/4

LOCATED IN SECTION 24, T1N, R7E, BHM
RAPID CITY, PENNINGTON COUNTY, SOUTH DAKOTA

RECEIVED

FEB 26 2010

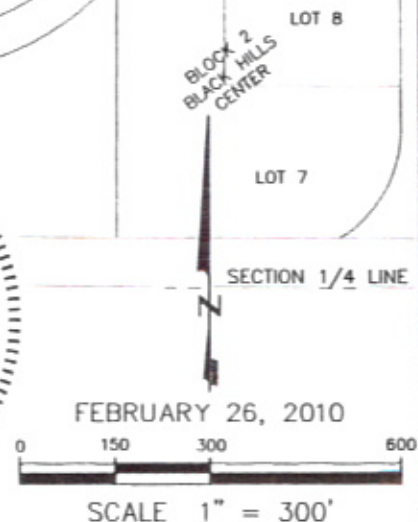
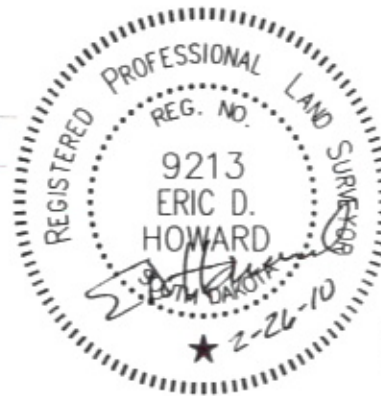
Rapid City Growth
Management Department

LINE	LENGTH	BEARING
L1	109.48'	S81°56'11"E
L2	151.94'	S54°45'40"E
L3	383.89'	S83°19'13"E
L4	50.00'	S06°40'47"W
L5	396.61'	N83°19'18"W
L6	262.07'	N54°45'41"W
L7	65.73'	S81°56'11"E



RENNER & ASSOCIATES, LLC.

616 SIXTH ST. + RAPID CITY, SD 57701
PHONE: 605/721-7310 + FAX: 605/721-7313
EMAIL: GARY@RENNERASSOC.COM



FEBRUARY 26, 2010